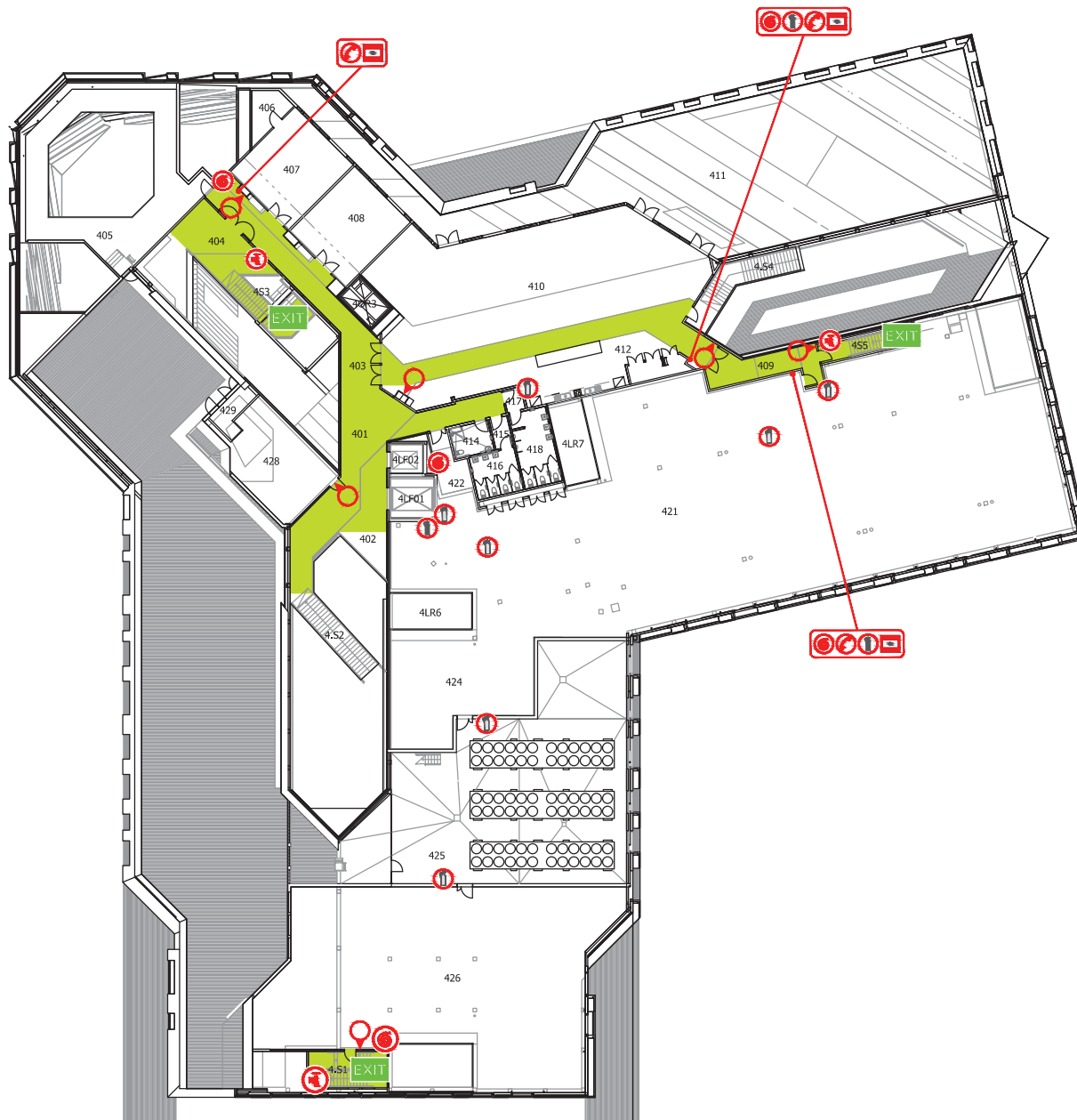



# 82 EVACUATION DIAGRAM

## New Horizons Level 4



### EMERGENCY PROCEDURES

#### FOR FIRE

- Activate a **Red** manual break glass alarm 

#### FOR ALL EMERGENCIES

- Call Security on  **ext 333**
- Or call  **99053333**
- Or use a **Red** emergency telephone 
- Assist anyone that needs help *if it is safe to do so*

#### EVACUATION

##### Be ready to leave the building:

- If danger threatens
- If instructed by staff, wardens or emergency services
- On hearing the alarms




##### When evacuating the building:

- Walk. Do not run. Do not use a lift
- Evacuate to the assembly area & stay there until the all clear is given by the authorised person

#### ALARMS

- **Beep-Beep** Prepare to evacuate, turn off equipment & listen for announcements over the PA system
- **Whoop - Whoop** Evacuate to assembly area

### SYMBOL LEGEND

 Main exit pathway	 Manual call point	 Fire hydrant
 EXIT Emergency Exit	 Emergency call point	 Fire hose reel
 EWIS Emergency warning & intercom system	 Emergency phone	 Water Extinguisher
 FIP Fire indicator panel	 AED Defibrillator	 Fire blanket

### ASSEMBLY AREA

