

# PENINSULA CAMPUS MASTERPLAN 2017 - 2037

Lyons Architects, NMBW, Glas Urban and AECOM in collaboration with Monash University

## CAMPUS VISION

**“Peninsula campus will evolve as a vibrant ‘hillside’ university town, defined by the unique relationship between its compelling native landscape and topography, and its world-leading, next generation learning environments.**

**Monash Peninsula will continue to be an industry leader in education and research, with a focus on Allied Health. The campus will build strong partnerships with the Hospital precinct and positive connections with the wider Frankston community.**

**Easily accessed by public transport, the campus will support a diverse student population, day and night, and become a unique educational and cultural destination for the surrounding regions and the greater Monash family of campuses. Urban resilience and adaptability are core principles of the Masterplan, demonstrating the University’s commitment to sustainability and net zero emissions.”**

## ABOUT THE MASTERPLAN

Peninsula Campus Masterplan 2017-2037 provides a 20-year vision and framework for the physical development of the Monash University Peninsula campus. The Masterplan coordinates all site information, functional requirements and organisational objectives into a deliverable plan for cohesive, inclusive and considered development. A focused engagement process was central to the development of the Masterplan, and has helped to shape the campus vision, principles and strategies.

The Masterplan is approved at the highest levels of the University; endorsed by Estates Committee and ratified by University Council.

## CAMPUS CONTEXT

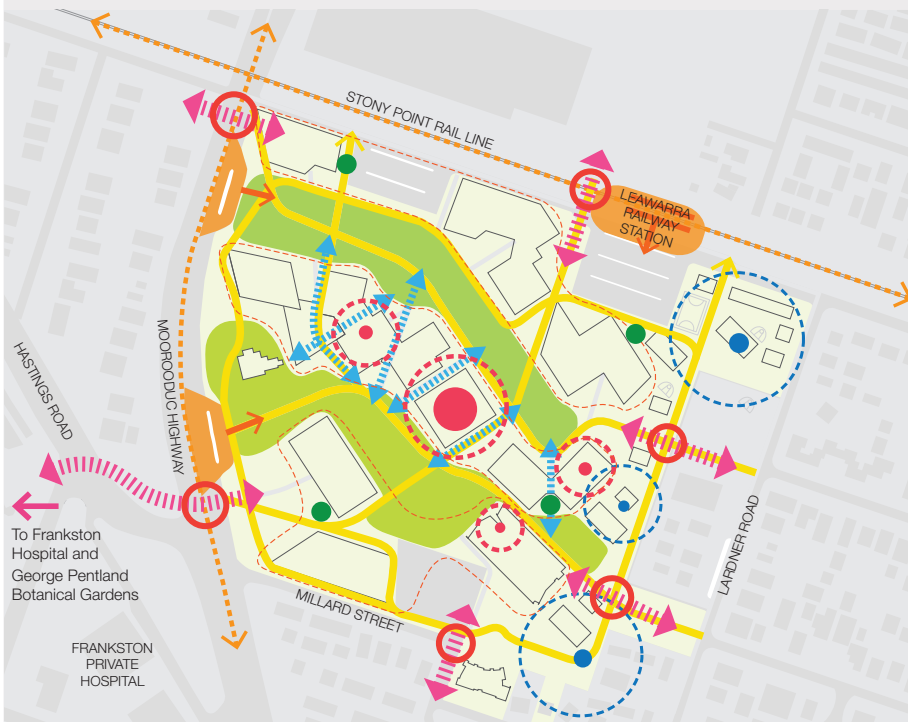
Peninsula campus is located 2 kilometres east of Frankston CBD and consists of over 20 individual buildings located on approximately 12 hectares of land. The campus is bordered by Moorooduc Highway to the west, Millard Street and Holmes Street to the south, Lardner Road to the east and the Stony Point railway line to the north.

Predominantly native landscapes are a key feature of Peninsula campus, which includes a wide variety of native planting species. The campus also has a distinct topography; nestled into the edge of the uplift of the Mornington Peninsula, with a 14.5 metre height difference from across the campus. This affords the campus and surrounds generous views across the tree canopy to Port Phillip Bay.

The University has a strong relationship with Peninsula Health, and as part of the Frankston Metropolitan Activity Centre Structure Plan, Peninsula campus will join Frankston Public and Private Hospitals in the creation of a vibrant, integrated Health and Education Precinct to strengthen the area’s role as a major health hub.

## MASTERPLAN IMPLEMENTATION

The Masterplan is not a detailed delivery plan; implementation is flexible, contingent on numerous factors that are internal and external to the University. Implementation of some strategies are underway, while others will take longer to realise.



# PENINSULA CAMPUS MASTERPLAN 2017 - 2037

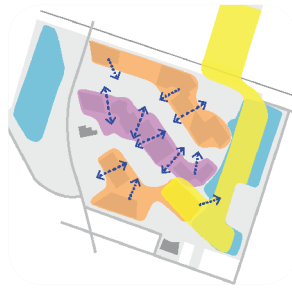
## MASTERPLAN STRUCTURE

The campus vision is supported by nine core principles that respond to the context and aspirations of Peninsula campus. The principles are reinforced through site-specific strategies (key strategic outcomes), organised around the four campus development themes: Buildings and Infrastructure, Public Realm, Access and Wayfinding and Campus Identity. This structure is consistent across the Monash Masterplan suite of documents.

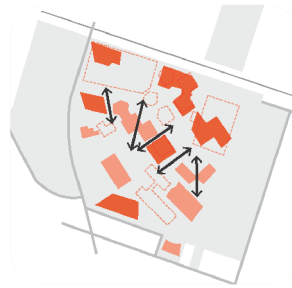
## MASTERPLAN PRINCIPLES

- 1 Enhance landscape typologies to build on existing natural assets
- 2 Buildings will contribute and enhance the valued landscape experience
- 3 Connect next generation teaching and learning spaces to the landscape
- 4 Consolidate student, staff and visitor services in a central, activated campus heart
- 5 Establish a primary walk network with connections to surrounds
- 6 Improve public and active transport connections
- 7 Create a 'sticky' campus that is active year-round
- 8 Create a welcoming, dynamic and inclusive destination engaged with its community
- 9 Be a leader in sustainability and urban resilience

## KEY STRATEGIC OUTCOMES



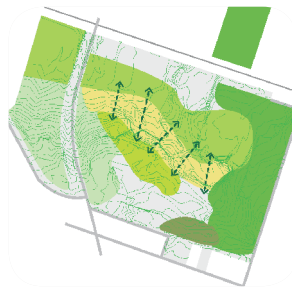
**Strings and Precincts:** Use the campus topography to align built form into 'strings' and 'precincts', programming the north and south built 'strings' as research and learning focused, the central string as student services, and the overlapping residential and sports precincts in the east.



**Built Form:** Provide buildings that enhance the landscape; by locating new built form on sites with low impact on established landscapes, such as demolished building sites or existing car parks. Refurbish buildings suitable for contemporary repurposing to use building stock efficiently.



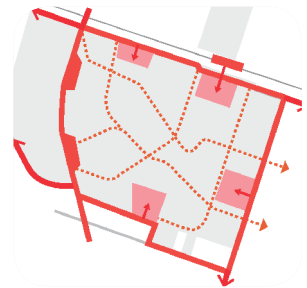
**Transport:** Improve and encourage sustainable and active transport to reduce reliance on individual vehicles. Enable a pedestrianised campus by consolidating vehicular traffic and parking to the campus periphery, with a primary walk network enabling after-hours service access.



**Landscape:** Retain and enhance the campus' distinct natural assets and landscape typologies. Use the hillside contours to create dynamic connections between the Valley and the Plateau Landscapes, and to activate various levels of buildings on the Hillside.



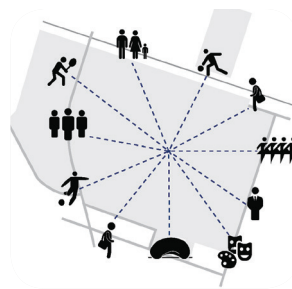
**Activation:** Consolidate retail and student services in a centralised string of buildings to enable critical mass of the campus' population to gravitate towards the centre of campus. Provide new student housing to activate the campus beyond formal teaching hours.



**Wayfinding:** Establish a network of primary and secondary paths to pedestrianise the campus and allow for easy navigation. Create building addressing and wayfinding systems to enhance campus legibility and guide students, staff and visitors.



**Sustainability:** Continue to pursue the University's sustainability targets with an integrated energy infrastructure strategy providing a platform for the transition towards a net zero carbon campus.



**Connectivity:** Establish clear campus interfaces with the surrounding neighbourhood and create flexible public realm spaces to support and increase community engagement and industry partnerships.



**MONASH**  
University

It's part of our Monash Masterplan | [monash.edu/masterplan](http://monash.edu/masterplan)

The Monash Masterplan is supported by the following documents: Monash Public Art Masterplan; Design and Development Controls - Landscape; Design and Development Controls - Interior.