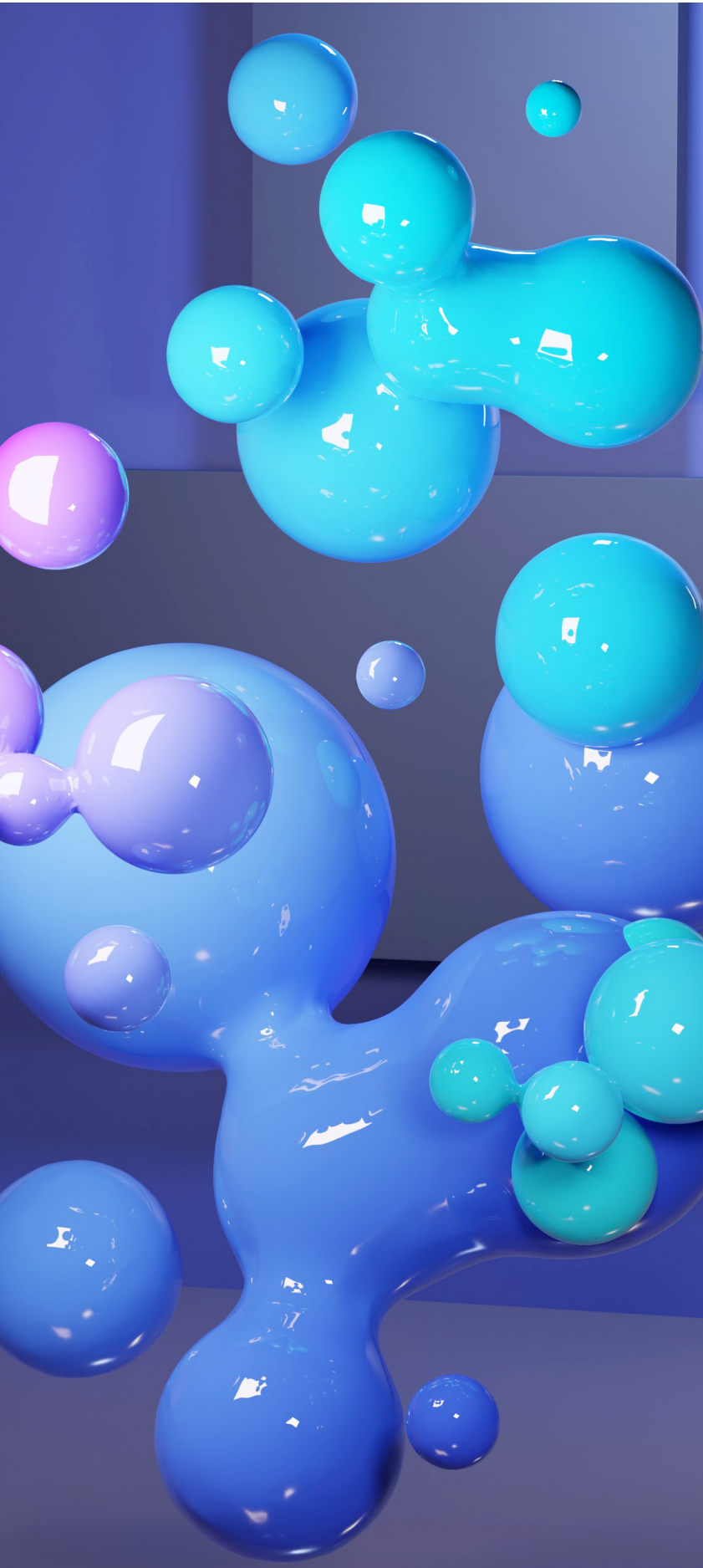


**ENTRY
SCHEMES**
2023



**WE CAN CHANGE
A NUMBER,
SO YOU CAN
CHANGE YOUR LIFE**

Not everyone's story is the same. Life can get in the way of study. And we know your ATAR may not reflect your true academic ability.

No matter the circumstances, we recognise and support talent. That's why we offer entry schemes to help you enter your preferred course at Monash, by considering your life circumstances.

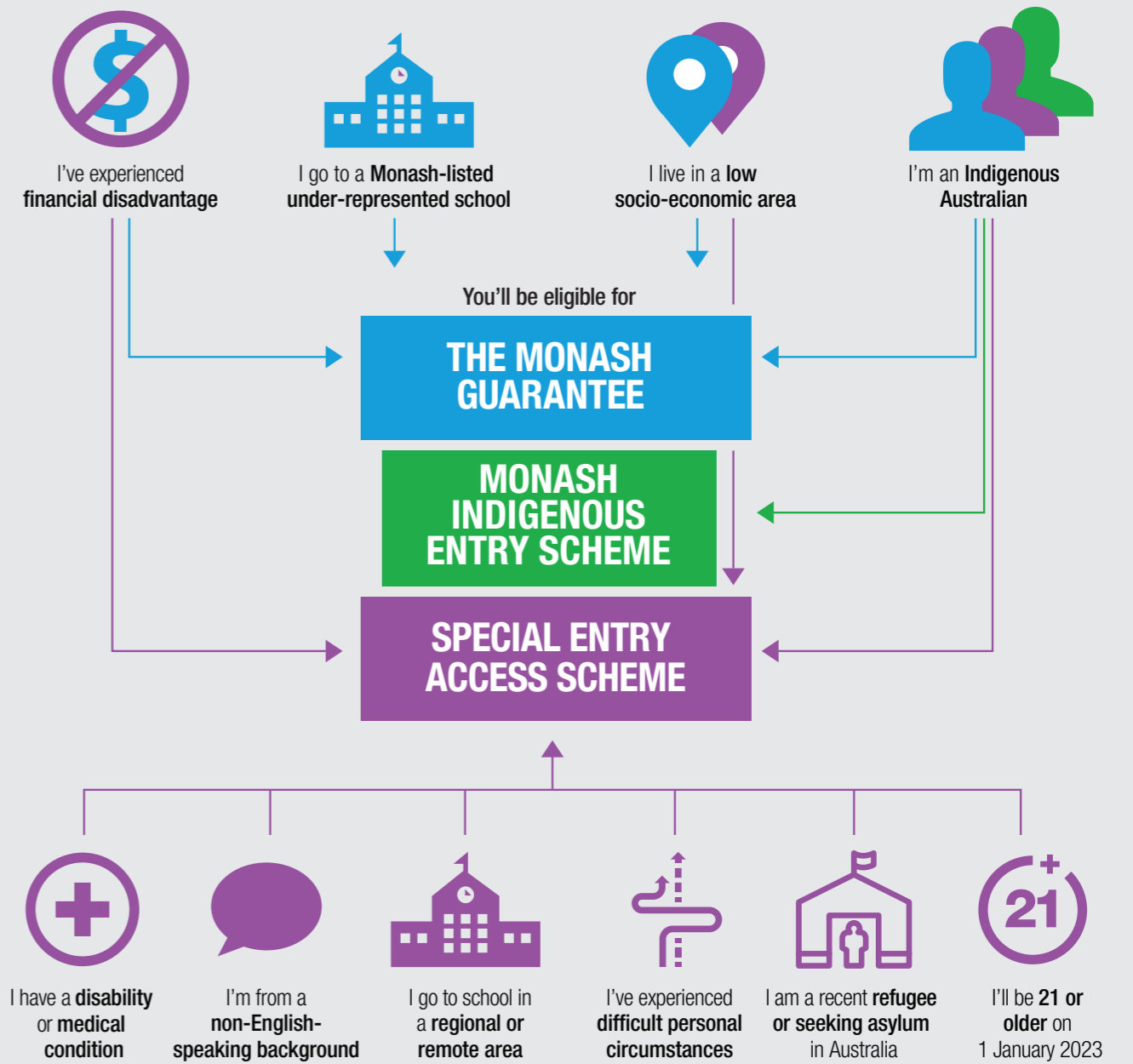
If you're inspired by big ideas and fired up with ambition, you'll fit right in at Monash. There's a good chance your university dreams could come to life.

Entry schemes

The Monash Guarantee promises entry at a lower ATAR, while the Special Entry Access Scheme (SEAS) adjusts your selection rank. Indigenous Australians, you'll also be eligible for entry through the Monash Indigenous Entry Scheme.

Having these schemes means that we can consider as many students as possible. In all cases, you must still meet prerequisites and any other requirements your course might have. For example, you must pass the UCAT to enter medicine, and audition to enter music.

Depending on your situation and background, you could be eligible for the Monash Guarantee or SEAS, or both. You don't have to choose between them. All you need to do is apply for SEAS through VTAC, and leave the rest to VTAC and us. Most Victorian universities use SEAS, while the Monash Guarantee is specific to Monash University.



Special Entry Access Scheme (SEAS)

SEAS adjusts your Monash selection rank in recognition of circumstances that may have affected your education. This gives you a better chance of getting an offer for the course you want. You'll receive adjustments that reflect the severity of your circumstances. The adjustments are made to your achieved ATAR. We use this adjusted ATAR during the selection process.

The "difficult circumstances" category will take into account the COVID-19 pandemic and its implications on your education, which can include:

- impact of remote learning
- unreliable internet access
- lack of suitable devices for online learning
- lack of access to practical requirements for specific subjects
- school disruptions due to isolation requirements, etc.

Eligibility

To be eligible for SEAS, you must:

- satisfy the criteria for one or more of the SEAS categories:
 - financial disadvantage
 - Indigenous Australian
 - live in a low socio-economic area
 - attend a school in a regional or remote location
 - a recent refugee or seeking asylum in Australia
 - born in a non-English-speaking country and moved to Australia after 1 January 2017
 - experienced difficult personal circumstances
 - disability or medical condition
 - aged 21 or older on 1 January 2023
- be an Australian or New Zealand citizen, an Australian permanent resident, or hold one of the following visas for Australia:
 - Permanent Humanitarian visa
 - Temporary Protection visa
 - Bridging visa A or E
 - Safe Haven Enterprise visa.

You can find more information about the SEAS categories and criteria at monash.edu/entry-schemes

THE MONASH GUARANTEE

You could be eligible for the Monash Guarantee if you:

- have experienced financial disadvantage
- are an Indigenous Australian
- attend a Monash-listed under-represented school
- live in a low socio-economic area.

How it works

Every Monash course has a Monash Guarantee ATAR. You'll find them listed within the course pages and in the table opposite. For most courses, if you meet the Monash Guarantee criteria, achieve or exceed the Monash Guarantee ATAR, and complete or meet all course prerequisites, you're guaranteed a place in that course. There are some exceptions, which are explained in the table.

Eligibility

To be eligible for the Monash Guarantee, you must:

- be studying an Australian Year 12 or International Baccalaureate in 2022
- meet or exceed the Monash Guarantee ATAR for your preferred course
- satisfy all course-specific prerequisites and requirements, such as the UCAT, a portfolio, interview or audition
- be an Australian or New Zealand citizen, or holder of an Australian permanent resident or permanent humanitarian visa
- demonstrate that you've experienced financial disadvantage, currently attend a Monash-listed under-represented school, are an Indigenous Australian, or live in a low socio-economic area.

Financial disadvantage

To demonstrate financial disadvantage, you must have documents that prove at least one of the following:

- You receive an income-tested Centrelink benefit (e.g. Youth allowance, Abstudy, Health Care Card)
- Your parents/guardians receive an income-tested Centrelink benefit (e.g. Family Tax Benefit A)
- You and/or your family are facing financial hardship or excessive financial obligations (e.g. living on a farm suffering from drought or floods).

Indigenous Australian

Our diverse student community includes Aboriginals and Torres Strait Islanders. If you're an Indigenous Australian and you meet the required ATAR, you'll be eligible for the Monash Guarantee.

Under-represented school

Monash has identified more than 1000 schools across Australia as being under-represented at university. If you attend one of these schools and meet the required ATAR, you'll be eligible for the Monash Guarantee. Find the list at monash.edu/guaranteedentry

Low socio-economic area

If you live in a low socio-economic area and meet the required ATAR, you'll be eligible for the Monash Guarantee. Find out if your address qualifies at monash.edu/seas

MONASH GUARANTEE ATARS

COURSE	ATAR
ART, DESIGN AND ARCHITECTURE	
Architectural Design	75
Design	70
Fine Art Fine Art	70 RC
Art History and Curating	70
DOUBLE DEGREES	
Architectural Design/Engineering	86
Art History and Curating/Arts	70
Art History and Curating/Business	75
Art History and Curating/Media Communication	75
Design/Business	75
Design/Engineering	86
Design/Information Technology	75
Design/Media Communication	75
Fine Art/Arts	70 RC
Fine Art/Business	75 RC
Fine Art/Education	77 RC
Fine Art/Information Technology	75 RC
Fine Art/Media Communication	75 RC
ARTS, HUMANITIES AND SOCIAL SCIENCES	
Arts	70
Criminology	70
Criminology and Policing	70
Global Studies	75
Media Communication	70
Music	70 RC
Politics, Philosophy and Economics	75 RC
DOUBLE DEGREES	
Arts/Business	75
Arts/Commerce	86
Arts/Criminology	70
Arts/Education	77 RC
Arts/Engineering	86
Arts/Fine Art	70 RC
Arts/Art History and Curating	70
Arts/Information Technology	78
Arts/Laws	94
Arts/Marketing	75
Arts/Music	70 RC
Arts/Science	75
Criminology/Information Technology	75
Global Studies/Commerce	86
Global Studies/Information Technology	75
Global Studies/Laws	94
Global Studies/Science	80
Media Communication/Art History and Curating	75
Media Communication/Business	75
Media Communication/Design	75
Media Communication/Marketing	75
Music/Commerce	86 RC
Music/Education	77 RC
Music/Laws	94 RC
Music/Science	75 RC
Politics, Philosophy and Economics/Arts	75 RC
Politics, Philosophy and Economics/Commerce	86 RC
BUSINESS	
Accounting	75
Actuarial Science	86
Banking and Finance	75
Business	75

Business Administration	70
Commerce	86
Economics	84
Finance	86
International Business	75
Marketing	75
DOUBLE DEGREES	
Actuarial Science/Commerce	86
Business/Arts	75
Business/Art History and Curating	75
Business/Accounting	75
Business/Banking and Finance	75
Business/International Business	75
Business/Marketing	75
Business/Design	75
Business/Education	77 RC
Business/Fine Art	75 RC
Business/Information Technology	75
Business/Media Communication	75
Commerce/Arts	86
Commerce/Biomedical Science	88
Commerce/Computer Science	88
Commerce/Economics	86
Commerce/Engineering	88
Commerce/Finance	86
Commerce/Global Studies	86
Commerce/Information Technology	86
Commerce/Laws	94
Commerce/Music	86 RC
Commerce/Politics, Philosophy and Economics	86 RC
Commerce/Science	86
International Business/Arts	75
Marketing/Arts	75
Marketing/Media Communication	75
EDUCATION	
Education – Early childhood and primary education, Primary and secondary education, Primary and secondary health and physical education, Primary and Secondary inclusive education, primary education, Secondary health and physical education.	70 RC
DOUBLE DEGREES	
Primary Education/Arts	77 RC
Primary Education/Business	77 RC
Primary Education/Music	77 RC
Primary Education/Science	77 RC
Primary Education/Fine Art	77 RC
Secondary Education/Arts	77 RC
Secondary Education/Business	77 RC
Secondary Education/Music	77 RC
Secondary Education/Science	77 RC
Secondary Education/Fine Art	77 RC
ENGINEERING	
Engineering – Aerospace, Biomedical, Chemical, Civil, Electrical and Computer Systems, Environmental, Materials, Mechanical, Resources, Robotics and Mechatronics, Software	85
DOUBLE DEGREES	
Engineering/Architectural Design	86
Engineering/Arts	86
Engineering/Biomedical Science	88
Engineering/Commerce	88
Engineering/Computer Science	88
Engineering/Design	86
Engineering/Information Technology	86
Engineering/Laws	94
Engineering/Pharmaceutical Science	86
Engineering/Science	86
INFORMATION TECHNOLOGY	
Computer Science	80
Computer Science Advanced	90
Information Technology	75

The Monash Guarantee doesn't apply to the Scholars Programs or Pathways to Law.

RC – a range of criteria is used for selection in addition to your ATAR, such as an audition or folio. You're guaranteed a place if you're successful in the additional selection criteria. Please note that health courses may also have restrictions due to clinical placements. We've reserved some places for Monash Guarantee students who wouldn't otherwise have been offered a place, and have the strongest results across the range of criteria.

DOUBLE DEGREES	
Computer Science/Commerce	88
Computer Science/Engineering	88
Computer Science/Science	80
Information Technology/Arts	78
Information Technology/Business	75
Information Technology/Commerce	86
Information Technology/Criminology	75
Information Technology/Design	75
Information Technology/Engineering	86
Information Technology/Fine Art	75 RC
Information Technology/Global Studies	75
Information Technology/Science	80
LAWS	
Laws	94
DOUBLE DEGREES	
Laws/Arts	94
Laws/Biomedical Science	94
Laws/Commerce	94
Laws/Computer Science	94
Laws/Criminology	94
Laws/Engineering	94
Laws/Global Studies	94
Laws/Information Technology	94
Laws/Music	94 RC
Laws/Politics, Philosophy and Economics	94 RC
Laws/Science	94
MEDICINE, NURSING AND HEALTH SCIENCES	
Biomedical Science	85
Health Sciences	70
Medicine	RC
Nursing	70 RC
Nursing and Midwifery	82 RC
Nutrition Science	70
Occupational Therapy	78
Paramedicine	79
Physiotherapy	93
Psychology	80
Public Health	79
Radiation Sciences, Radiation Sciences (Informatics)	80
Radiography and Medical Imaging	93
PHARMACY AND PHARMACEUTICAL SCIENCES	
Pharmacy	84
Pharmacy/Master of Pharmacy	84
Pharmaceutical Science	75
Pharmaceutical Science Advanced	84
DOUBLE DEGREES	
Pharmaceutical Science/Engineering	86
SCIENCE	
Applied Data Science	75
Applied Data Science Advanced	90
Science	75
Science Advanced – Global Challenges	85 RC
Science Advanced – Research	90
DOUBLE DEGREES	
Science/Arts	75
Science/Biomedical Science	85
Science/Commerce	86
Science/Computer Science	80
Science/Education	77 RC
Science/Engineering	86
Science/Global Studies	80
Science/Information Technology	80
Science/Laws	94
Science/Music	75 RC

MONASH INDIGENOUS ENTRY SCHEME

The Indigenous Entry Scheme offers Aboriginal and Torres Strait Islander applicants admission to a range of undergraduate courses with a significantly lower ATAR requirement (an achieved ATAR of 50+, higher for some courses).

There are no special classes, extra requirements or time added to the course for students admitted under this entry scheme and students will graduate with the same Monash degree as any other student.

There are also opportunities to transfer into double degrees and into specialist degrees (eg. Bachelor of Law; Bachelor of Engineering).

To be eligible for an offer, you must:

- be of Aboriginal and/or Torres Strait Islander descent;
- achieve an ATAR of at least 50 (this may vary for some courses, so please make sure you check the course requirements).
- meet the course prerequisites (this information can be found in the VTAC course entry guide);
- complete the VTAC supplementary information form which is available from: vtac-supp.adm.monash.edu/SupplementaryVTAC
- add your preferred Indigenous Entry course as a preference on your VTAC application.

monash.edu/study/how-to-apply/indigenous-student-applications

MORE INFORMATION

monash.edu/entry-schemes

Email: future@monash.edu

Phone: 1800 MONASH (1800 666 274)

Monash University reserves the right to alter information, procedures, fees and regulations contained in this document. Please check the Monash University website for updates: monash.edu
All information reflects prescriptions, policy and practice in force at time of publication. Published April 2022.
Produced by University Marketing, Admissions and Communications, Monash University. Job 22-AS00015.
CRICOS provider: Monash University 00008C.

HOW TO APPLY

You must submit a Special Entry Access Scheme (SEAS) application through VTAC and include Monash University in your course preferences to be considered for SEAS adjustments and the Monash Guarantee.

For scholarships, you can also make an application through VTAC. Remember to include any documents VTAC asks you to provide.



SEAS AND MONASH GUARANTEE ESTIMATE CALCULATOR

Check out our online calculator that estimates your SEAS-adjusted selection rank and provides a list of the courses you may be eligible for. You can also see if you're eligible for the Monash Guarantee.

monash.edu/seas