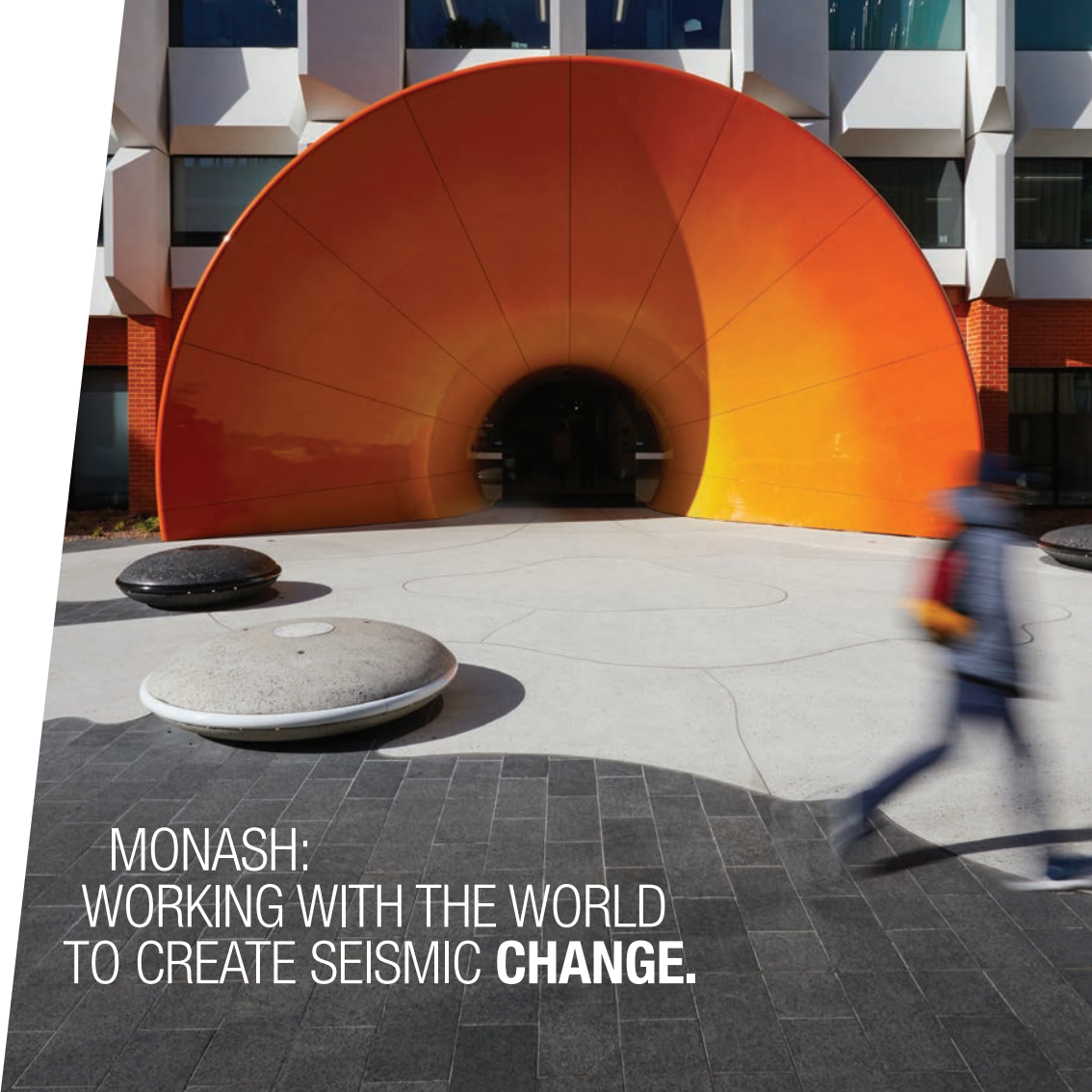


Contact
Ben Vivekanandan
Director, Precincts and Government
Office of the Deputy Vice-Chancellor (Enterprise)
Monash University
T +61 3 9905 5245
E ben.vivekanandan@monash.edu
monash.edu/enterprise



AN ENTERPRISING
UNIVERSITY MAKING
PROFOUND IMPACT.



MONASH:
WORKING WITH THE WORLD
TO CREATE SEISMIC **CHANGE.**

At Monash, the desire to make a difference informs everything we do. We're driven to change our world for good.

We go beyond good intentions, making an impact both locally and internationally.

Monash has established itself as a leading, respected institution across sectors, and our breadth of activities both in research and its application is expansive.

Being the largest university in Australia, we educate over 78,000 students annually, and our researchers published an incredible 7372 papers in 2017 alone.

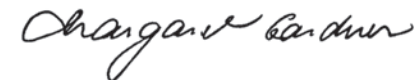
A critical part of the state and national economy, we contribute \$5.2 billion annually in economic activity. We are part of Victoria's wider story of growth, enterprise and excellence.

In just over a year, our contributions have grown significantly, adding an additional \$500 million to the economy.

But, we do something more important than generate big numbers.


Monash, through its ambitious agenda of enterprise, discovery and place-making has had real-world impacts on the lives of Australians. We will continue to forge and nurture our deep connections with industry, government and community to achieve more.

The success story, ours as a University and for the community at large, continues.



Professor Margaret Gardner AO
President and Vice-Chancellor





IF MONASH WERE AN ASX LISTED
COMPANY, IT WOULD RANK IN THE
**TOP 80 NATIONALLY, AND
TOP 40 IN VICTORIA.**

ECONOMIC POWERHOUSE

Monash directly accounts for
\$5.2 billion
in economic activity annually
in Australia.

Our operating revenue
is more than
\$2.4 billion
and our assets are valued at over
\$4.8 billion.

Monash generates
\$6.60
for every \$1 of government funding.

Monash's direct contribution
to Australia's GDP is
\$1.3 billion annually.

More than
22,000
international
students
came to
our Australian
campuses
in 2017.


Education remains Victoria's
largest export sector.

Monash contributes
25% of Victoria's
education exports –
\$2.3 billion
annually.

This equates to 5%
of Victoria's exports.

GLOBAL EDUCATOR OF CHOICE





THE MONASH PRECINCT IS THE LARGEST EMPLOYER IN VICTORIA, OUTSIDE MELBOURNE'S CBD

We directly employ **17,400 people** —
over 8000 of those full time.

We're committed to excellence in urban design and will invest more than

\$1.2 billion over the next five years

delivering:

- > BrainPark
- > Technology, Design and Education Building
- > Bio-science research labs
- > Sound Gallery and Jazz Club
- > Biomedical Learning and Teaching Building.

BUILDING THE FUTURE

WE INVESTED **\$430 MILLION** IN CAPITAL EXPENDITURE, INCLUDING **\$344 MILLION** IN BUILDING AND CONSTRUCTION, WHICH CREATED 2900 JOBS IN THE CONSTRUCTION INDUSTRY.

CSIRO

ADDITIVE MANUFACTURING

MONASH UNIVERSITY

MAXIMA

MONASH ACADEMY FOR CROSS AND
INTERDISCIPLINARY MATHEMATICAL
APPLICATIONS

ELECTRON MICROSCOPY

ARMI

(AUSTRALIAN REGENERATIVE
MEDICINE INSTITUTE)

GENOMICS

ANTIBODY TECHNOLOGIES

PROTEOMICS

FLOW CYTOMETRY

AUTOMATION

OPTICAL MICROSCOPY

CRYO ELECTRON

BIOINFORMATICS

MASSIVE

eRESEARCH

FOOD INNOVATION CENTRE

HISTOLOGY

BDI (BIOMEDICINE
DISCOVERY INSTITUTE)

MIME (MONASH INSTITUTE OF MEDICAL ENGINEERING)

INSTRUMENT DESIGN

PRE-CLINICAL RESEARCH

IMMERSIVE
VISUALISATION
XRAY ANALYTICAL

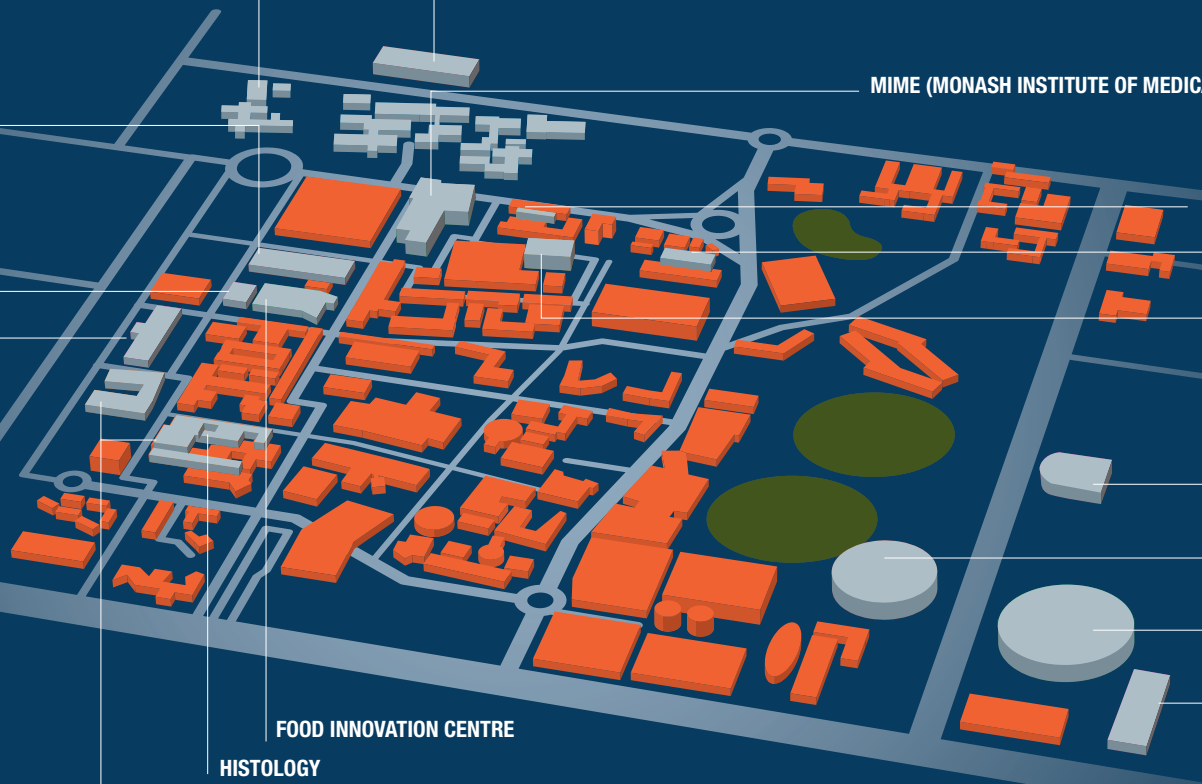
MONASH BIO IMAGING

VICTORIAN HEART HOSPITAL

AUSTRALIAN SYNCHROTRON

NANO FABRICATION

MONASH PRECINCT



GLOBAL CHANGE LEADER

- > Four continents
- > Four local and five international campuses
- > Three university partnerships
- > 78,000 students
- > 360,000 alumni

UNITED STATES OF AMERICA

UNITED KINGDOM

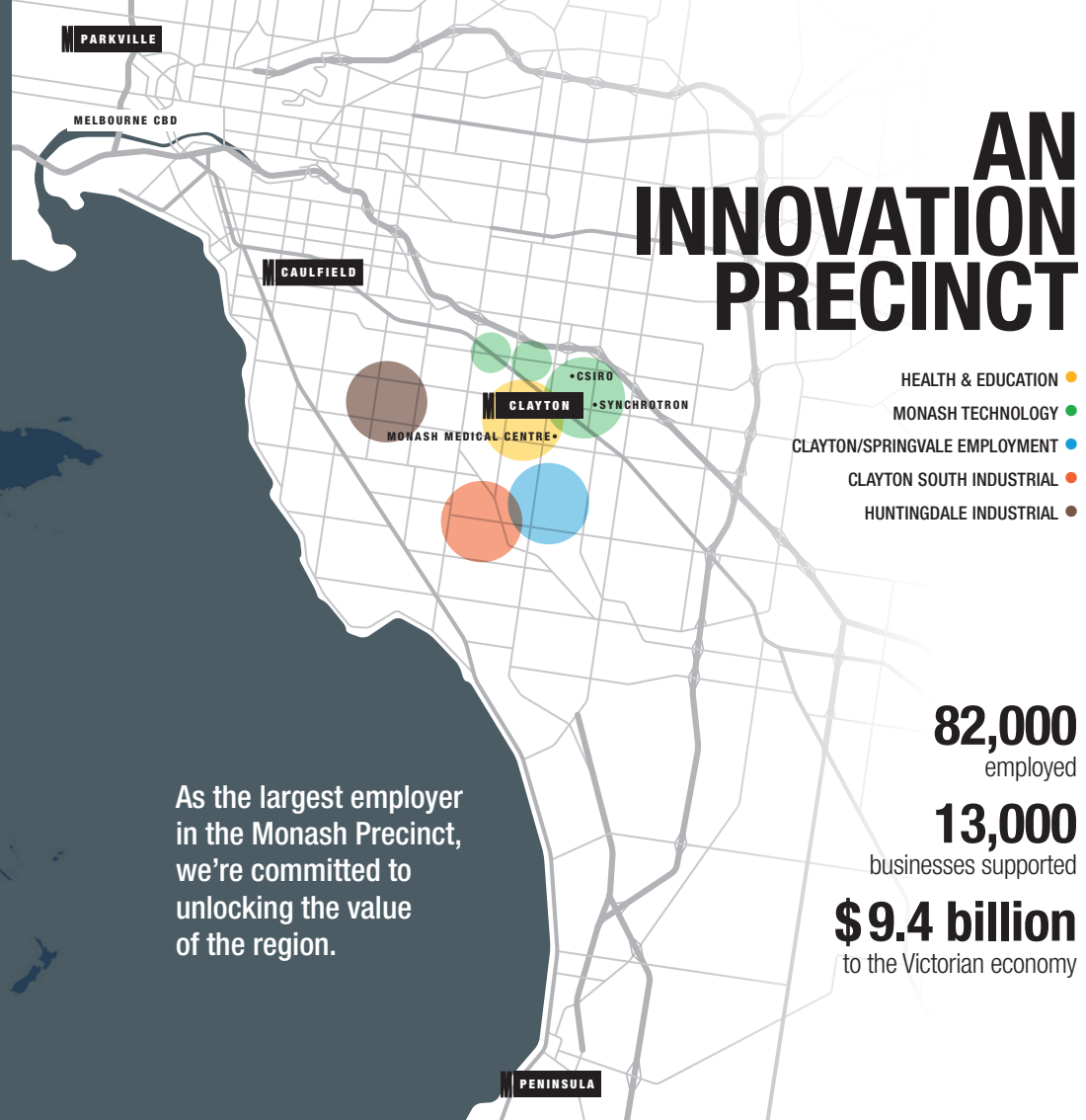
ITALY

INDIA

CHINA

MALAYSIA

INDONESIA





FOSTERING COLLABORATION

DRIVING
KNOWLEDGE
GENERATION

Australia's first dedicated heart hospital –
the \$543 million

**Victorian
Heart Hospital.**

**Australian
Synchrotron –**

the nation's most important
research tool has \$520 million
in support over the next 10 years.

**Monash Clayton
Microgrid –**

our own network to receive
and store energy from renewable
sources on campus.

\$56 MILLION INVESTMENT
IN THE CLAYTON CAMPUS
CULTURAL PRECINCT.



Monash welcomes

820,000 visitors

to our sports and arts precincts annually.

Events like Open House, WinterFest and our MLive program draw crowds to engage in the vibrant community life at Monash,

generating \$9.4 million
to the Victorian economy.

Reviving the Alexander Theatre

In a new era for the performing arts in Melbourne's southeast, the redevelopment of the theatre facilities and creation of two new venues will set the stage for world-class theatre, music and dance performances.

Innovative, contemporary

and adventurous, Monash University Museum of Art (MUMA) at Caulfield engages the curiosity of thousands of community members with its dynamic ever-changing collection of public art.

SHAPING SOCIETY, GROWING COMMUNITY

Monash is committed to supporting students from regional areas and underrepresented schools.

- > Achieving Potential scholarships for students from disadvantaged backgrounds.
- > The Monash Guarantee ensures thousands of placements for students from underrepresented (including regional) schools.

A LASTING REGIONAL IMPACT

Monash's School of Rural Health Education hubs in Bendigo, Gippsland and the Murray Darling region have created a 'stay to train, stay to practise' pathway for health practitioners, growing access to qualified health professionals in regional areas.

Our world-leading research at Morwell in Victoria's Latrobe Valley, following the Hazelwood mine fire, will provide insights into the long-term public health implications for regions exposed to smoke and debris from mine fires.



THE \$55 MILLION
REDEVELOPMENT
OF OUR PENINSULA
CAMPUS WILL
OFFER MORE THAN
150 ROOMS
FOR STUDENTS
TO STUDY AND
ENGAGE IN LIFE
ON CAMPUS.

4293 solar panels and counting –
enough to power 130 homes.

68,000 LED light replacements.

Enough solar power is produced
annually on campus to light the

MCG for 2.3 years.

Changing our world to be a greener,
more sustainable place starts with us.

We lead the globe with our research,
but we're driving the change we
want to see with commitment to

**Net Zero emissions
by 2030.**

**SUSTAINABLE
FUTURE**

**TEN 5-6 GREEN-STAR
BUILDINGS ARE ALREADY
PART OF OUR BUILT
ENVIRONMENT
ON CAMPUS.**

