



MONASH
University

MONASH UNIVERSITY LIBRARY

2017 ANNUAL REPORT



CONTENTS

01	INTRODUCTION	5	05	SUCCESSFUL UNIVERSITY PARTNERSHIPS AND COLLABORATIONS	25
02	MAJOR ACHIEVEMENTS Celebrating the transformed Sir Louis Matheson and Caulfield Libraries Evidencing excellence through two teaching awards	6		DiscoverIt Expos Copyright Material Collaboration with English Connect Introduction of Altmetrics	
03	FAST FACTS	10	06	OUTREACH AND EXHIBITIONS	28
04	OUR CONTRIBUTION Completing Research and Learning Online for student learning Enabling educational design with the eLearning Activities Browser Partnering with faculty to develop employability skills at Pharmacy Building law students' statutory research skills A busy year for Rare Books Embracing data analytics Strengthening student equity Listening to students' feedback End of an era: Monash University Lectures Online (MULO) Transferring Berwick Library to Federation University	15		Presenting research through art Conferences, seminars and exhibitions Celebrating our history	
			07	SCHOLARLY COMMUNICATION	32
				Transforming the Monash University Research ecosystem Monash Collections Online Monash Research Portal monash.figshare Monash University Publishing	
			08	OUR STAFF	34
				University Librarian Staff engagement survey Industry leadership Committee membership	

OUR MISSION

Inspiring and enabling the Monash University community through exceptional expertise, scholarly resources, spaces and technologies, and through extensive collaboration and outreach.



01

INTRODUCTION

I am pleased to present Monash University Library's 2017 Annual Report. The Library is highly valued within the University and this report provides an insight into the contribution we make towards the achievement of the University's goals and aspirations.

This has been an extraordinary year of transformation and achievement. We have seen the completed refurbishment and launch of two of our largest libraries, Sir Louis Matheson and Caulfield libraries. We have also continued to transform the way students, staff and community interact and engage with the Library, through research and learning programs, collections, and exhibitions.

I thank Cathrine Harboe-Ree, our University Librarian for 15 years, for her outstanding leadership in the remarkable transformation of the Library. I welcome the appointment of Robert Gerrity as the new University Librarian from March 2018.

Our staff have been the cornerstone of our achievements as an academic library that is nationally and internationally recognised as an industry leader. I thank them for their professionalism and tremendous efforts during this transition year.

JANETTE BURKE
Interim University Librarian

MAJOR ACHIEVEMENTS

Celebrating the transformed Sir Louis Matheson and Caulfield libraries

On 23 May the Library welcomed the Chancellor Mr Simon McKeon, Vice-Chancellor Professor Margaret Gardner, and other distinguished guests including His Royal Highness Prince Sisowath Tesso of Cambodia, to a celebration marking the completion of the Sir Louis Matheson Library transformation.

A few months later, on 27 September, the Library held another celebration for the completion of the Caulfield Library transformation. Guests led by Deputy Chancellor Mr Yehudi Blacher and other University Council members sat under the new glass-roofed four storey void, where light streams down through all four levels of the library.

University Librarian Cathrine Harboe-Ree described the libraries as welcoming, inspiring and enabling, and noted that “they are now cohesive and logically organised facilities with a range of study options and a very high standard of finish”.

Matheson Library now includes over 1,700 seats, 240 computers, teaching capacity for 200 students and 20 bookable group discussion rooms, and features new interactive wayfinding. Significant Indigenous artworks from the University’s collection have been installed by the Monash University Museum of Art. The overarching theme of ‘Narrative’ guided the selection of both the significant art installations and the text from Jonathan Swift’s *Gulliver’s Travels* for graphics used throughout the library. The importance of the Library’s collection of rare materials about Swift was also reflected in the inaugural exhibition in the new gallery, *Tall tales and true*, and in the naming of Swift’s Cafe.

At Caulfield Library, significant structural works enabled the doubling of the library’s footprint. These comprised removal of internal walls and remodelling of interiors to enable the library’s expansion into the entire building, including the ground level, the addition of a full height glass-curtained extension together with a spectacular external shade house and decking on



02



Damian Gleeson, Andrew Dixon, Anne Taib, Leanne McCann, Nell Kimberley and Josephine Hook, at the 2017 Australian Awards for University Teaching

the western side, and incorporation of the external balconies on the upper levels. The much larger space resulting from these changes allows the library to provide twice as much seating – now 1,600 seats – together with over 270 computers, teaching capacity for 200 students and seven bookable discussion rooms. The theme of ‘Community by Design’ informed the selection and installation of over 100 artworks throughout the library, including the specially commissioned *Give or Take* ceramic tile wall installation by Rose Nolan, and also complements the natural timber finishes of the library interior. A new permanent display shines a light on treasures from the artists’ books collection, encompassing many limited editions handcrafted through fine press printing. This display is mounted in glass cabinets that form the walls of the upper level teaching room, enabling engagement with collection items by students and staff as part of Library and Faculty object-based learning and teaching.

EVIDENCING EXCELLENCE THROUGH TWO TEACHING AWARDS

The Mastering Academic and Research Skills (MARS) program received national recognition at the 2017 Australian Awards for University Teaching with an Award for Programs that Enhance Learning. It was one of two national winners in the category of ‘Student experiences and services supporting learning, development and growth in higher education’. The innovative MARS model, developed and delivered by the Library in partnership with the Monash Business School (MBS) and the Office of Learning and Teaching, provides extensive development opportunities for Masters by coursework students.

The MARS program was first developed by the Library and adopted by the MBS in 2012 to address the academic and research skills gaps among this cohort, as enrolments of students who identified English as a second language increased to 70% by 2016. The online and blended learning program ensures that international and domestic students are able to effectively engage with their lectures and maximise success in their studies.

The Faculty of Arts recognised a team of Library staff with a Faculty Award for Programs that Enhance Teaching for the Arts Master Skills Program (AMS). Designed and delivered by Library staff in partnership with Faculty academics and educational designers, the AMS program provides all Masters by coursework students with multiple opportunities and platforms to learn, practise and receive feedback on academic expectations, research, writing, referencing and career skills – key skill areas vital in maximising student success.

The program is based on a blended and multimodal approach to learning, with face-to-face and online modes catering for diverse learning styles and needs. A three-day orientation program ensures the culturally diverse cohort have a positive student experience in their transition to postgraduate academic life. The specific workshops and resources enable students to learn, study and research effectively through to graduation and prepare them for the global workplace. The program also delivers a coordinated and integrated approach across all Arts Masters programs, which has been welcomed by students.

03 | FAST FACTS

These figures demonstrate the ongoing transformative change from a print to a digital environment, in all aspects of the Library's activity.

COLLECTIONS

4,478,217 +1.3%
TOTAL COLLECTIONS

3,058,993 -1.4%
PRINT

1,419,224 +7.7%
ELECTRONIC

1,297,708 +8.2%
BOOKS

119,337 +2.6%
SERIALS

2,179 +13.8%
DATABASES



LOANS & ENQUIRIES

717,233 -10.5%
TOTAL LOANS AND RENEWALS

ENQUIRIES

7,696 -3.5%
TELEPHONE

1,567 +16.0%
ASK.MONASH EMAIL

15,401* +14.7%
ASK.MONASH
FAQS ACCESSED

* Excludes Q4 due to system change.

ONLINE ACCESS

9,473,090*

ACCESSES OF LIBRARY-MANAGED E-RESOURCES

LIBRARY-CREATED E-LEARNING RESOURCES

140 LIBRARY GUIDES
6,012,852 VIEWS*

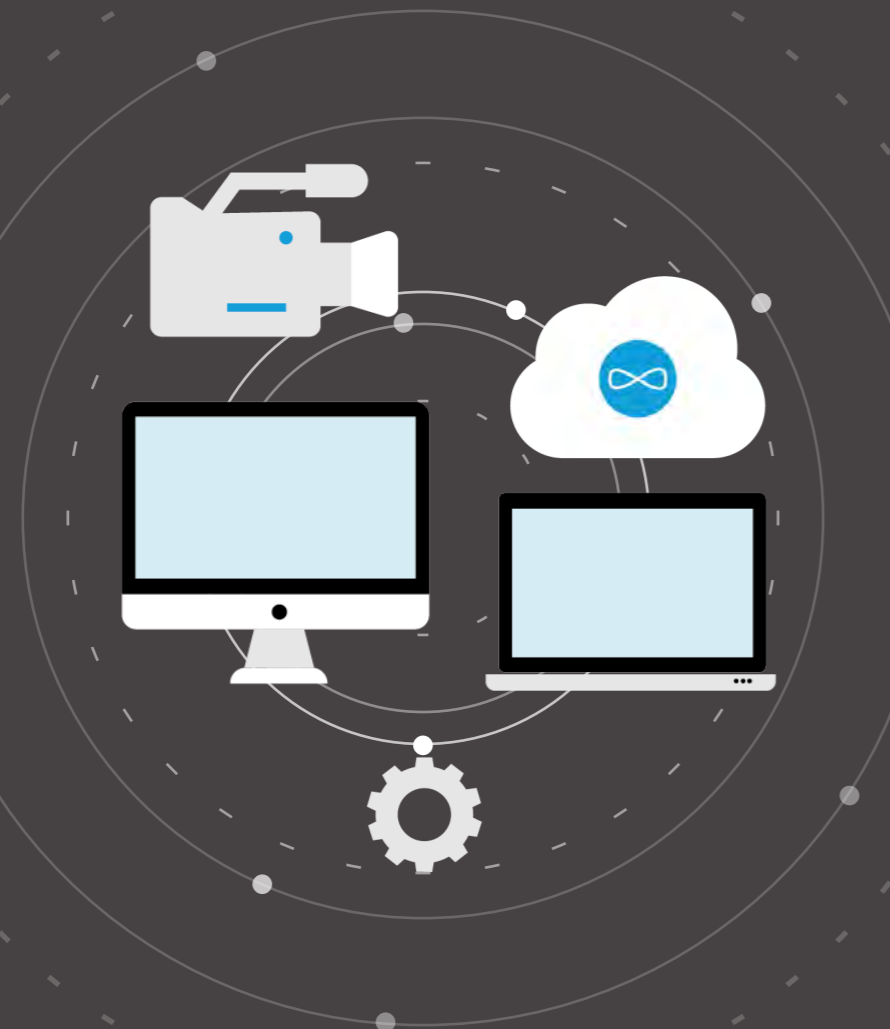
251 YOUTUBE VIDEOS
52,776 VIEWS
98,324 MINUTES WATCH TIME

242 E-LEARNING OBJECTS
32 CREATED / UPDATED IN 2017
10,065 VIEWS

33 LIBRARY-OWNED MOODLE COURSES FOR STUDENT LEARNING
4 CREATED IN 2017
107,428 VIEWS

LEARNING CAPTURE

1,429,982 VIEWS OF RECORDED LECTURES



RESEARCH AND LEARNING ONLINE

495,070 PAGES VIEWED

10 CORE SKILL DEVELOPMENT ONLINE TUTORIALS
129,615 VIEWS

CITING AND REFERENCING
71,706 VIEWS

ACADEMIC INTEGRITY
45,395 VIEWS

RESEARCH REPOSITORY

677,328 MONASH.FIGSHARE VIEWS

78,273 MONASH.FIGSHARE DOWNLOADS

RESEARCH AND LEARNING SKILLS

1,593 skill development program sessions with **35,041** participants

62% of programs were in-curriculum

New eLearning resources were developed for **11%** of the programs.

Online learning continues to be a significant proportion of how Library staff teach and how students engage with us.

52% of the Library's **149** skill development eLearning resources were provided in-curriculum.

Programs, resources and activities are underpinned by the Research Skill Development framework as the major pedagogical tool.

ADDITIONAL LIBRARY ENGAGEMENT IMPACTING CURRICULUM

31 projects / initiatives

New eLearning resources were developed for **45%** of these projects / initiatives.



RESEARCH AND LEARNING POINT

5,569 drop-in sessions -12.9%

The reduction in drop-in sessions represents greater alignment in-curriculum as students experience more comprehensive, contextualised skill development and access to embedded eLearning modules.

1:1 consultations continue to be a significant component of engagement with researchers and HDR students. **1,282** were conducted in 2017.

10 course review submissions were completed for the Faculty of Arts, Faculty of Business and Economics, and Faculty of Medicine, Nursing and Health Sciences.

* YOY comparative % unavailable as the data extraction method changed in 2017.

OUR CONTRIBUTION

04



COMPLETING RESEARCH AND LEARNING ONLINE FOR STUDENT LEARNING monash.edu/rlo

Research and Learning Online (RLO), designed and developed by Library staff with input from students, academics and other University stakeholders, provides open education resources anywhere, anytime. The precursor Language and Learning Online suite of resources will be retired in early 2018, marking the end of an extensive project to redevelop and extend the content coverage of this well-used site. Students have welcomed RLO with almost half a million page views for the year. Several educational institutions have sought permission to refer their users to RLO resources.

Students can work through the interactive modules at their own pace to develop skills for:

- Studying at university
- Academic integrity including citing and referencing
- Research and writing for a range of purposes in different disciplines from undergraduate to graduate research level.

The existing Citing and Referencing modules - the Library's most heavily used eLearning resource - have been refreshed and integrated with other self-paced interactive modules combining activities, assignment samples, interactive tasks, downloadable study guides and eLearning videos to provide a contemporary, appealing platform for active learning. Educators can add RLO content directly to their Moodle units.

Students and academics participated in a series of promotional videos about RLO and how it has enabled students to perform better in their studies.

ENABLING EDUCATIONAL DESIGN WITH THE ELEARNING ACTIVITIES BROWSER

monash.edu/elab

The Library's Digital Learning and Teaching team developed the eLearning Activities Browser (eLAB) to help educators design blended learning activities that align with pedagogical objectives. Users can browse the collection of example activities from various pedagogical frameworks, such as Bloom's taxonomy. The activities have been tagged with extensive metadata and can be downloaded, modified and incorporated into other projects. Designed for use by Library staff, the Browser can also be used by educational designers and academics involved in (re)designing their units for online/blended learning; staff from other areas of the University are already making use of it and the Library has been invited to present it at various activities and workshops. Interest in using and contributing to eLAB as it develops further has also been expressed beyond the University, by others in the higher education sector.

The Digital Learning and Teaching team's poster about eLAB was awarded twice at the International Conference of Models of Engaged Learning and Teaching (I-MELT).

PARTNERING WITH FACULTY TO DEVELOP EMPLOYABILITY SKILLS AT PHARMACY

In every Monash University library, subject librarians and learning skills advisers collaborate with faculties to embed employability skills in the curriculum as part of the research and learning skills agenda. CL Butchers Pharmacy Library staff play a key role as simulated patients in formative exercises and Objective Structured Clinical Examinations (OSCEs), providing feedback on students' communication and interpersonal skills.

This approach to engaging in the curriculum, which has grown significantly since the introduction of OSCEs in 2011, acknowledges the professional competencies of Library staff as they partner with the Faculty to prepare and develop career-ready pharmacists. Library staff presented a poster on their work at the 2017 Medical Librarian Association Annual Meeting in Seattle.

BUILDING LAW STUDENTS' STATUTORY RESEARCH SKILLS

The progressive work of librarians and learning skills advisers at the Law Library was recognised by their Australian Law Librarians' Association peers with the publication of an article describing the Library's approach to building students' statutory research skills within the Monash LLB and LLB (Hons) degrees. The article emphasised the importance of working closely with the Chief Examiner and lecturers to create meaningful activities and assessments in line with course content, of taking an iterative learning approach where skills are first introduced and then refreshed in later course units through a series of building blocks, of linking tasks to an assessment grade to provide encouragement and reward for successful completion, and of making use of new eLearning technologies to give variety and promote student engagement.

The article's title, 'Practice makes perfect', reflected the Library's history of active involvement with teaching within the Law Faculty which informed the development and delivery of a new set of learning materials in 2017 for the

compulsory research unit at the end of the new LLB (Hons) degree. The full suite of research skills building blocks, together with the Library's Clerkship Masterclass, provides students with opportunities to develop, practise and refine their skills and improve their employability. This work was reported in the *Australian Law Librarian* (vol 25, no.1, 2017).



A BUSY YEAR FOR RARE BOOKS

In addition to maintaining and expanding the Library's Rare Books Collection, staff from this area had a busy year engaging with students, staff and visitors. The team facilitated a range of undergraduate classes and workshops which showcased collection highlights as well as providing practical experience of primary document analysis, and also hosted six study placement students and provided presentations to the ANZSHM History of Medicine Conference, Melbourne Rare Book Week, the Ephemera Society and the (Un)Ethical Futures: Utopia, Dystopia and Science Fiction Conference.

The opening of the new Special Collections Reading Room, as part of the Matheson Library redevelopment, enhanced access to the collection. This was timely in view of a number of significant donations and acquisitions during the year, which included:

DONATIONS

- Science fiction donations from the Melbourne Science Fiction Club, John Foyster and Geoffrey Allshorn
- Penguin paperbacks collection (1935-1965) from Chris Barling
- A collection of books-about-books from Jeff Prentice
- An illuminated manuscript (c1500) and 18th century two-volume set of South Pole voyages from Cathrine Harboe-Ree
- The archive of the Saving Nutcote campaign (May Gibbs' home)

ACQUISITIONS

- 116 items from the Bischoff collection; these 12-16th century manuscript fragments will be used by Library and Faculty staff within coursework units in history and palaeography





EMBRACING DATA ANALYTICS

The Library has introduced new data analysis tools to strengthen compliance, evidence-based decision making and service improvement. The Library's Information Systems and Electronic Resources teams joined forces with eSolutions to set up a process of ingesting the EZproxy logs which capture use of electronic resources into the data analysis tool, Splunk. Use of Splunk has increased efficiency in identifying compromised accounts, strengthened the protection of staff and student accounts and identity, improved relationships with e-resources vendors and decreased downtime due to misuse.

The Journal Usage Statistics Portal (JUSP) has provided the ability to easily access COUNTER reports and offer the additional value of data visualisation reports using Tableau. JUSP supports vital day-to-day

collection development and priority analysis projects.

Monash University, University of Sydney and The University of Melbourne sought to analyse and benchmark print monograph library collections, selecting GreenGlass as the tool to elicit understanding. The libraries collaborated to gain insight into East Asian language collections, an area of development common to all.

STRENGTHENING STUDENT EQUITY

With support from the Commonwealth Government Higher Education Participation and Partnerships Program (HEPPP), the Library continued to develop and run programs tailored to the needs of students from low socio-economic status backgrounds, with particular emphasis on reaching students who did not achieve the ATAR required to gain direct entry into courses due to extenuating circumstances including financial disadvantage, attendance at an under-represented school, and personal challenges. To achieve this, Library staff have implemented a suite of research and learning skills programs for students in the pathway programs Diploma of Tertiary Studies and Diploma of Higher Education, the Monash Access Program and the Transition to University Biosciences Bridging Program. Several extra activities were developed for Indigenous students, both at university level and also involving

high school students participating in the Yulendj "Hands on Monash" camp.

Underlying these activities was the development of an Inclusive Teaching Toolkit, aiming to bring together a series of principles, guidelines and resources related to inclusive teaching practices in the library environment for staff to use in their blended and face to face teaching programs, one-on-one educational consultations, and eLearning resource development for students across the full range of diversity and inclusion target groups. The Toolkit builds on existing national and Monash University guidelines, the literature on inclusive teaching in higher education, and the data gathered in October 2017 from a series of Library staff focus groups on inclusive teaching. A draft of the Toolkit was completed in December 2017 for rollout in 2018.

LISTENING TO STUDENTS' FEEDBACK

The primary aim of the biennial Library User Survey is to identify key concerns of students so that the Library can address them. A record 5,348 respondents completed the survey in 2017. Results were generally positive about the Library, with overall performance rated at 76.7% (up from 74.2% in 2015) and overall satisfaction rated at 5.56 out of 7 (improved from 5.19). Information Resources continued to be the strongest category, and there was also a significant improvement in the Facilities and Equipment category following the completion of the Caulfield and Matheson transformations. While the gaps between importance and performance scores for questions in this category improved overall from 2015, students considered some areas to be below expectations at the Hargrave-Andrew Library, specifically:

- I can find a quiet place in the Library to study when I need to
- I can find a place in the Library to work in a group when I need to
- A computer is available when I need one.

The Library has developed action plans to address areas for improvement across its locations. While refurbishment plans for the Hargrave-Andrew Library are in development, the shortage of seating will be immediately addressed with the addition of 250 seats and the reorganisation of existing seating areas to better define group and quiet study areas.

A new series of questions provided insights into students' use of skill development programs, RLO tutorials and resources, and drop-in sessions with librarians and learning skills advisers.

END OF AN ERA: MONASH UNIVERSITY LECTURES ONLINE (MULO)

During the year the Library made preparations to hand over the management of the University's lecture recording service to the Office of Learning and Teaching from 2018. This popular service was pioneered by the Library in the early 1980s using audio tapes to record lecture content, and renamed in 1999 when the Library built an online system to provide digital recordings. The inhouse system remained in service until 2009, when a commercial application (Lectopia, later Echo360) was adopted. The transfer of management will enable continued development of Learning Capture as part of a suite of related teaching resources and services under the direction of Monash Office of Learning and Teaching.

TRANSFERRING BERWICK LIBRARY TO FEDERATION UNIVERSITY

Following the announcement in 2016 that Federation University would acquire the Berwick Campus, Monash and Federation University Library staff worked together to plan a seamless transition for Library users. During 2017 the Berwick Library was staffed and run jointly by the two universities, providing dual library services for Monash and Federation students despite different Library management systems, IT infrastructure and service models. Through this period, staff demonstrated that they were adaptable and resilient, while reporting that the experience offered unique opportunities for them to exchange ideas and participate in collaborative problem-solving. At the end of the year the final handover was marked by a 'Back to Berwick' celebration for current and former Library staff who reflected on the growth of the Library from a 'virtual' service to an important physical presence on the campus. Federation University took over sole management of the campus and library from the start of 2018.

USER SURVEY KEY INSIGHTS

74% of students who use the Library physically or online achieved at least a Distinction average

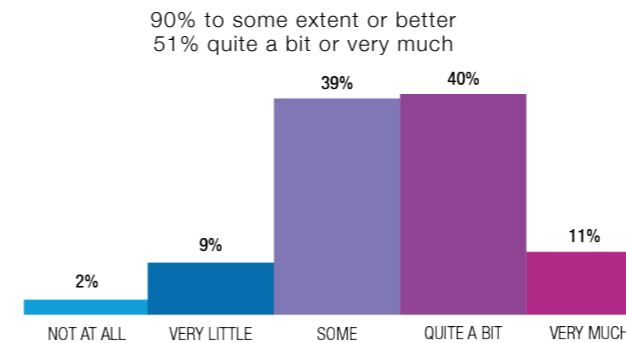
SKILLS DEVELOPMENT

PROGRAMS

Participation in skills development programs delivered by Library staff

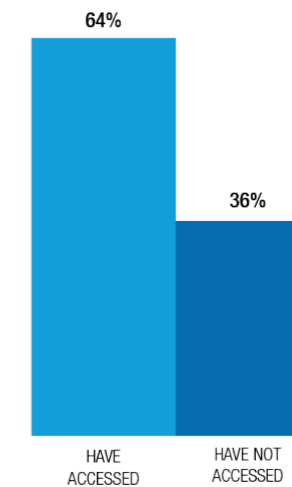


Extent to which the program has enabled a student to perform better in their studies

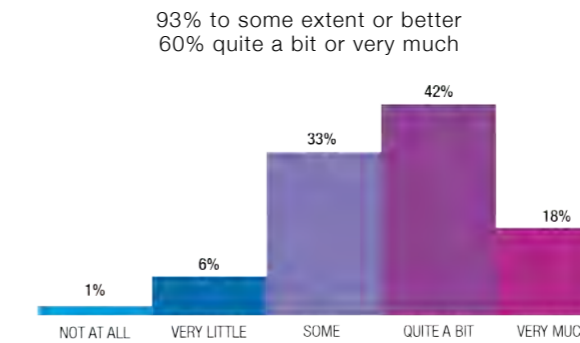


RESEARCH AND LEARNING ONLINE

Accessing Research and Learning Online interactive tutorials and resources

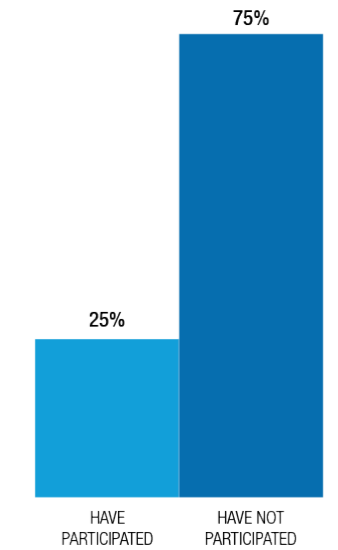


Extent to which the interactive tutorials/resources have enabled a student to perform better in their studies

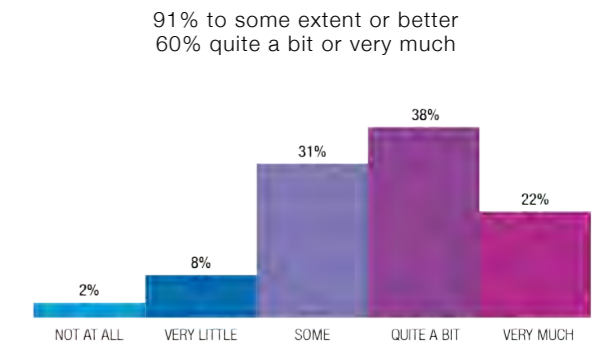


DROP-IN SESSIONS

Participation in drop-in session with a librarian or learning skills adviser



Extent to which the drop-in session enabled a student to perform better in their studies





Peninsula DiscoverIt Expo

SUCCESSFUL UNIVERSITY PARTNERSHIPS AND COLLABORATIONS

DISCOVERIT EXPOS monash.edu/library/discoverit

A new DiscoverIt initiative commenced in 2017, to promote greater use of Library databases and other electronic resources. Tradeshow-style expos were held for the University community at Law, Hargrave-Andrew and Peninsula libraries. The events forged connections between academics, librarians and vendors, helping to ensure the needs of academics and researchers are being met. Academics could provide feedback and find out about journals or databases focusing on new areas of research. Vendors commented that the event was unique among university libraries.

The Library subscribes to at least 1.1 million databases, ejournals and ebooks, and it is important to ensure that these resources are relevant and well-used. Electronic resources account for over 80% of the Library's acquisitions every year. Academics access eresources daily but are often unaware of new and upcoming products, or of enhancements to existing products.

The DiscoverIt initiative will continue in 2018, with expos to be held at the Matheson, Caulfield and Pharmacy libraries.

REVIEWING USE OF COPYRIGHT MATERIAL

The Library led the University's contribution to the national review of use of Copyright material at Monash, Macquarie, Griffith, Curtin and Newcastle Universities. The Interim Report was provided to Universities Australia and the Council of Australian University Librarians (CAUL) executive in early 2017, with the Final Report to be delivered in 2018. The aim of the review and report is to contribute to evidence-based decision-making and licence negotiation for the sector, led by Universities Australia.

05

COLLABORATION WITH ENGLISH CONNECT

After a successful trial during semester 1, the co-location of English Connect Peer Support with Research and Learning points became an ongoing arrangement at Caulfield, Hargrave-Andrew and Matheson libraries. This model has been in place at the Peninsula Library for some time. At a Research and Learning point drop-in session, learning skills advisers and librarians advise students on information research for their assignments and on improving their academic learning, communication and study skills. Peer Support program facilitators, comprising later year students, focus on students' English language skills in academic writing, especially grammar. To prepare for the trial and inform their work, Library Research and Learning Coordinators ran sessions for peer facilitators on the difference between student collaboration and collusion, and on assertion and boundaries. Observational sessions were also held to allow peer facilitators to see the work undertaken at Research and Learning points, to develop

effective referral processes and to foster engagement between staff at the co-located points.

The trial partners reported positive findings on each of the four success indicators which had been identified for the various stakeholders (the Library, English Connect, students and the University), including improved student experience, increased student engagement with English Connect resulting in opportunities for English Connect service expansion, improved service quality and increased collaboration between English Connect and Research and Learning staff.

The two distinct services are located adjacent to one another in an entry level space, visibly connected to Library Information points. Co-location allows Library staff and Peer Support facilitators to refer students to the alternative service where appropriate.



INTRODUCTION OF ALTMETRICS

Subject librarians were important collaborators with the cross-functional teams of the University's Research Services Transformation initiative to integrate altmetrics into the myResearch portal. Altmetric data is connected to research outputs entered into Pure and displays as a "donut" on the researcher's external profile on the Research portal. Library staff, with expertise in maximising research impact, had existing relationships with the vendor and experience advising researchers in the use of altmetrics. The Library leveraged this to play a key role in the education component of the roll-out, presenting to faculty research leads and facilitating a number of train-the-trainer sessions. This engagement opened up new opportunities for collaboration with teams involved in Research Services Transformation and to reach a wider audience to talk about the services and skills the Library offers.

06

OUTREACH AND EXHIBITIONS

PRESENTING RESEARCH VISUALLY

At Caulfield Library, faculty research can now be displayed on the new digital wall. *Fifty Sisters* by Professor Jon McCormack of the Faculty of Information Technology (FIT) was followed in November by *Seeing Sight: Illusionism in visual culture* by Anna Daly of the Faculty of Art, Design and Architecture (MADA).

Matheson Library also now has a digital wall for hosting displays. The first exhibition was *Kashgar*, a selection of evocative photos of the western Chinese region by

Australian photographer John Gollings, collected as part of a Monash Asia Institute international research project.

At the Hargrave-Andrew Library, the ongoing series of digital exhibitions continued with *Angkor Wat*, a 3D dynamic simulation of archaeological and historical data showing how the metropolis of Angkor Wat in Cambodia might have operated in the 12th century. The project was presented by Dr Tom Chandler and his team from the FIT sensiLab.



CONFERENCES, SEMINARS AND EXHIBITIONS

Tall tales and true: journeys real and imagined, the first exhibition to be presented in the Gallery, was mounted to coincide with the completion of the redeveloped Matheson Library. Curated by Stephen Herrin, Rare Books Librarian, in collaboration with guest curator Clare Williamson, the exhibition took viewers on a journey through a range of historical accounts, travel books and literary works from the Rare Books Collection. A virtual exhibition on the Monash Collections Online platform accompanied the physical exhibition to provide access from beyond the Gallery and showcase the collection to the world.

The *Jane Austen: By a Lady* exhibition was officially launched at the Gallery in December 2017. With its combination of rare books and interactive technologies, from virtual reality systems to touchscreens, this collaborative exhibition was the first of its kind for the Library.

The exhibition was first developed in 2017 by MADA staff and their students for display at the City of Melbourne's Library at The Dock, to mark the 200th anniversary of Austen's death. Following its success there, the Library worked with Jeff Janet, Lecturer, Department of Design at MADA, eSolutions and the Monash Immersive Visualisation Platform, to create a new iteration incorporating new elements for display at Matheson Library. Book collector and Emeritus Professor Chris Browne worked with staff and students on the original exhibition and provided rare items from his own extensive personal collection.

Other significant events included:

- A virtual exhibition, *Jonathan Swift in an Uncharted Land*, which was presented as part of a worldwide commemoration of the 350th anniversary of Swift's birth and featured works digitised from the Library's collections.
- The annual History lecture, *Insults in early modern Italy*.
- Pre-conference workshops for the Monash/Warwick (Un)Ethical Futures: Utopia, Dystopia and Science Fiction conference.
- A science fiction seminar. This was complemented by an exhibition of items donated to Monash University by the Melbourne Science Fiction Club.
- The resumption of the regular Bukan Rumpi Tapi Diskusi discussions about Indonesian literature and writers.
- A display of children's books at Peninsula Library.

CELEBRATING OUR HISTORY

monash.edu/library/timeline

Fifty-seven years after the establishment of Monash University Library, a new illustrated historical timeline celebrates the achievements of the Library and its staff through times of unprecedented change in library facilities, resources and services. It is intended that this record will continue to grow with the addition of new information and links to more detailed reports where possible.



SCHOLARLY COMMUNICATION 07

TRANSFORMING THE MONASH UNIVERSITY RESEARCH ECOSYSTEM

The Library has transformed the Monash University Research Repository from one limited platform to three modern expandable solutions that fully meet the needs of the Library's various collections and the research community. Digitised special collections are available through Monash Collections Online while academic publications are available through the University's myResearch portal and research data and Monash University theses through monash.figshare.

These repositories are the most recent developments in research data and open access publication management for the discovery, citation and reuse of research outcomes.

MONASH COLLECTIONS ONLINE repository.monash.edu

The Library launched the new Monash Collections Online website, where the Library's extensive range of digitised special collections has been migrated from the ARROW platform. The new portal enables the discovery and promotion of these valuable resources with improved searching, suitability for mobile devices and the ability to create custom online exhibition and collection pages.

MONASH RESEARCH PORTAL research.monash.edu

Staff from the Library's Research Infrastructure Division have worked closely with the University's Research Services Transformation team in the development of a new research portal that gives Monash staff a single point of access to processes and systems for managing research funding applications, awarded projects, ethics applications, external profiles and research outputs.



MONASH.FIGSHARE monash.figshare.com

Access of research data in monash.figshare grew from 88,809 views and 14,911 downloads in 2016 to 677,328 views and 78,273 downloads in 2017, making it the most used institutional instance of figshare in the world.

These usage figures show a strengthening of the Monash research culture, with the University's researchers being leaders in sharing their research data through the figshare platform. More citations for Monash research are to be expected as a result.

monash.figshare offers researchers the opportunity to store, share and make their data available while they retain control of access rights and re-use conditions. It uses the latest in cloud-based technology while ensuring that valuable research data is stored securely. Monash theses have been stored on the platform since the end of 2016, while 2017 saw the implementation of an automated upload process, integrated with the University's PhD assessment system.

MONASH UNIVERSITY PUBLISHING publishing.monash.edu

It was another good year for the University's publishing arm, with Charlie Ward's book *A Handful of Sand: The Gurindji Struggle, After the Walk-off* shortlisted for both the Prime Minister's Literary Awards 2017 (Australian History) and the Northern Territory Chief Minister's History Book Award 2017.

More than fifty author events were held during the year, at locations around the country including the National Library of Australia and Royal Historical Society of Victoria. Highlights included multiple launches of *Australian Lives: An Intimate History* by Anisa Puri and Alistair Thomson, and a range of promotional events for Race Mathews' *Of Labour and Liberty*.

Katherine Wilson's *Tinkering: Australians Reinvent DIY Culture* and Bain Attwood's *The Good Country: The Djadja Wurrung, The Settlers and the Protectors* were launched at booked-out venues and have received extraordinarily positive reviews. *Tinkering* was also chosen by Radio National 'Drive' presenter Raf Epstein as his 'book of the month'.

(Left) Herman Moll -1732
A New and Correct Map of the Whole World Shewing Ye Situation of Its Principal Parts, Viz. The Oceans, Kingdoms, Rivers, Capes, Ports, Mountains, Woods, Trade-Winds, Monsoons, Variation of Ye Compass, Climats, &c. With the Most Remarkable Tracks of the Bold Attempts which Have Been Made to Find Out the North East & North West Passages ... (London: Sold by H. Moll ... I. King ..., 1719)



OUR STAFF

UNIVERSITY LIBRARIAN

After 15 years as University Librarian, Cathrine Harboe-Ree retired from the University in June. Senior University staff lauded her leadership and vision which steered the Library to national and international recognition as a leading academic library. Mr Robert Gerrity has been appointed as University Librarian to commence on March 19, 2018.

STAFF ENGAGEMENT SURVEY

Library staff participated in the University's 2017 staff engagement survey, with a response rate of 76%. Overall Library staff recorded an improvement in employee engagement with the University (82% satisfaction, compared with 74% in 2014) while there was also a significant improvement in staff perceptions of the Library's organisational performance (74% satisfaction, compared with 52% in 2014). Whilst responses to most questions were more positive than the average across the University, the Library has developed action plans to address priority issues where improvement is needed.



INDUSTRY LEADERSHIP

Library staff have made significant contributions to the profession as organisers of key conferences. These are some examples:

ANZREG CONFERENCE

The Library hosted the 2017 ANZREG Conference (anzreg.org) at the Monash University Law Chambers and the Caulfield Library. Interim Library Information Systems Manager, Megan Lee, as current ANZREG Chair, led the selection of the conference keynote speaker, Matt Borg, who spoke on “A matter of perspective: User experience in Libraries”. Megan Lee also led the development of the two-day conference, the Alma & Primo Best Practice and the Developer Day programs and coordinated the visit by North American Ex Libris trainer, Connie Braun, to deliver on site custom Ex Libris product training in Australia and New Zealand ANZREG institutions.

INTERNATIONAL CONFERENCE OF MODELS OF ENGAGED LEARNING AND TEACHING (I-MELT)

Education and Research Program Manager, Lynette Torres, worked with John Willison, Said Al-Sarawi (University of Adelaide) and Nayana Parange (University of South Australia) to prepare the International Conference of Models of Engaged Learning and Teaching (I-MELT). MELT (Willison, 2016) is the umbrella term for the suite of adapted frameworks that share core conceptual parameters informed by the design of the Research Skill Development (RSD) framework.

(UN)ETHICAL FUTURES: UTOPIA, DYSTOPIA AND SCIENCE FICTION

The Matheson Library hosted the pre-conference activities for (Un)Ethical Futures: Utopia, Dystopia and Science Fiction, an academic conference organised by graduate research students from Monash University and the University of Warwick. The day included structured social activities; a session on turning a conference paper into a publishable journal article, run by Roslyn Halliday (Learning Skills Adviser, Arts); a panel on academic publishing with Nathan Hollier (Monash University Publishing) and editors of scholarly journals; and the launch of a new issue of the Faculty of Arts journal *Colloquy: Text, Theory, Critique*. A Rare Books public talk and panel, Sci Fi at Matheson, coincided with the conference. A special Shut Up And Write session, which opened and closed with yoga and meditation, was facilitated by Anne Melles (Subject Librarian, Literary Studies) and Mia Goodwin (Librarian) and was attended by graduate research students from Monash and Warwick.



49 STAFF TRAINED IN SQUIZ FOR RLO

27 Page builders trained
17 staff moved on to other roles

22 Page builder assistants trained
7 staff moved on to other roles

RESEARCH AND LEARNING ONLINE PRODUCTION SNAPSHOT

monash.edu/rlo

CONTRIBUTORS **89**
Storyboard writers **30**
Storyboards written **41**
Pages built **118**
Storyboard and built pages reviewers **52**



85 NEW CONTENT ITEMS PRODUCED

29 Quick study guides

13 Pre-existing online tutorials

43 New interactive tutorials
(Comprising 118 individual pages)



LIBRARY STAFF ARE MEMBERS OF ADVISORY AND LEADERSHIP GROUPS AS FOLLOWS:

APAC Library Advisory Board	CAVAL Digital Interest Group (DIG)	Council of Australian University Librarians (CAUL)/Council of Australian and New Zealand University Librarians (CONZUL) Value and Impact Community of Practice	North American Coordinating Council on Japanese Library Resources Interlibrary Loan/Document Delivery Committee
Arts Libraries Society / Australia and New Zealand (ARLIS/ANZ)	CAVAL Products and Services Committee	Cross Institutional Mentoring Program Reference Group	OCLC Research Library Partnership (OCLC RLP) Research Information Management White Paper Working Group
Asian Library Resources of Australia (ALRA) Committee	CAVAL Professional Development Interest Group (PDIG)	Elsevier Research Data Management Advisory Board	OL Society Ltd (publishers of Overland)
Australian Law Librarians (ALLA) Board	CAVAL Reciprocal Borrowing Advisory Committee (RBAC)	Group of Eight Librarians	Peninsula Health - Library working party
Australian Library and Information Association (ALIA) Interlibrary Lending Advisory Committee	CAVAL Research and Information Group (CRIG)	International Group of Ex Libris Users (IGeLU) and Ex Libris Users of North America (ELUNA) Alma Product Working Group	Proquest Advisory Board
Australian Library and Information Association (ALIA) Students and New Graduates Group	Council of Australian University Librarians (CAUL)	International Conference on Models of Engaged Learning and Teaching (I-MELT) Organising Committee	Relais Advisory Group
Australian National Data Service (ANDS) Steering Committee	Council of Australian University Librarians (CAUL) Electronic Information Resources Consortium (CEIRC)	International Librarians Network	Australian Publishers Association, Scholarly and Journals Committee
Australia New Zealand Regional Ex Libris Group (ANZREG)	Council of Australian University Librarians (CAUL) 2017 Conference Committee	Libraries Australia Interlibrary Loans and Document Delivery User Group Meeting	Use of Copyright Material University Systems Project Working Group
Bachelor of Library and Information Management (BLIM) Curriculum Development Committee, Box Hill Institute	Council of Australian University Librarians (CAUL) Leadership Institute 2018 Program Committee	Frankston Mornington Peninsula Education Precinct Committee (Secondary schools, Tertiary Institutions, Public Libraries, Local Council)	Wiley Board
Book Collectors Society of Australia (Victorian Branch)	Council of Australian University Librarians (CAUL) Quality and Assessment Advisory Committee		
CARM Shared Collection Advisory Committee			
CAVAL Board			

PUBLICATIONS AND PRESENTATIONS BY LIBRARY STAFF ARE AVAILABLE ON MONASH.FIGSHARE:

<https://doi.org/10.4225/03/57CD01371A826>





MONASH
University

PHONE

+61 3 9905 5054

WEBSITE

monash.edu/library

POSTAL ADDRESS

Monash University Library
40 Exhibition Walk
Monash University
Victoria 3800 Australia

CRICOS Provider Number: 00008C

