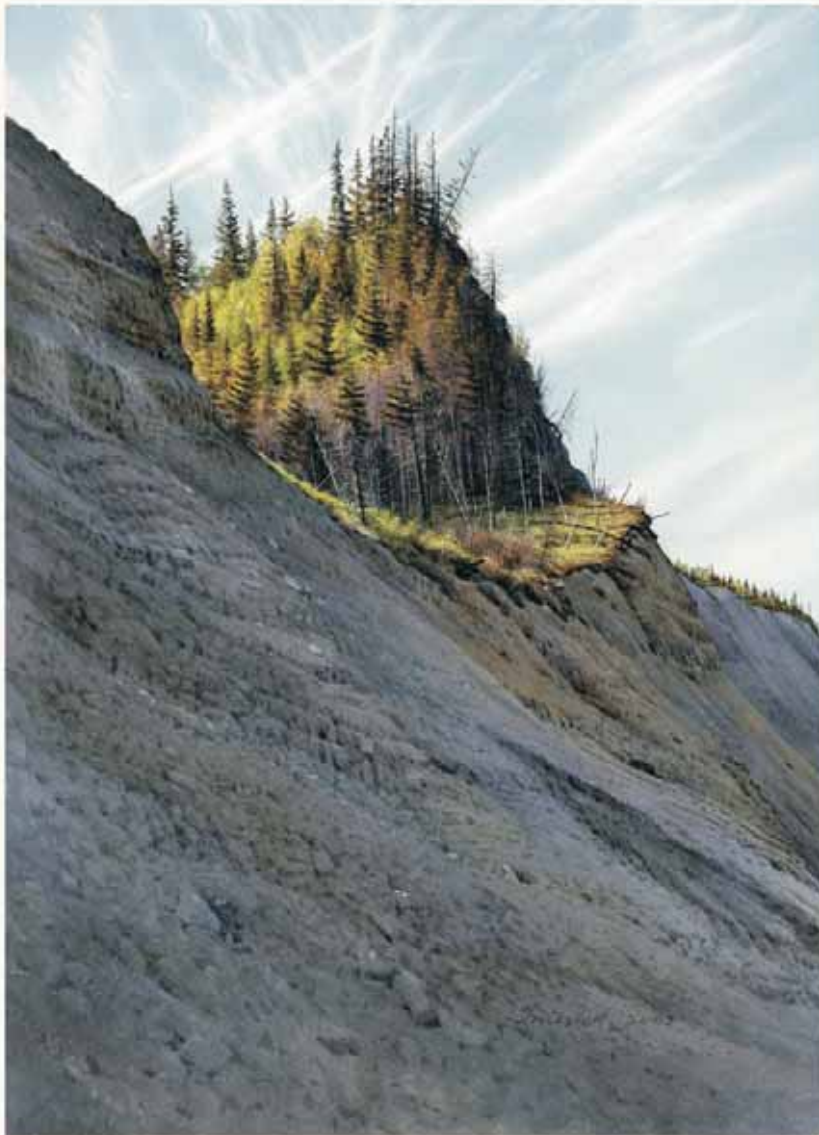


The Artist and the Scientists: by artist Peter Trusler

"PRE-CAMBRIAN SHADOW" 2003
Pre-Cambrian Cliffs on the White Sea Coast, Russia
Watercolour & Gouache on Paper
36.5 x 27.5 cm 68 x 55 x 4 cm
Signed and dated lower right; Trusler 2003
Field study from White Sea Coast Expedition, June-July 2003.
Exhibit ID 11

11



"Precambrian Shadow - Russia"

© Copyright Artist Peter Trusler 2003
Digital File Code: 309_2905MB at 600dpi at 48x37cm
Printed on Epson Watercolor Paper 190gsm Inkjet/Fox Custom Profile
Inkjet/Archiwal "Giclée" Fine Art Digital Printing & Hi-Resolution Scanning +613 9832 6464

The Artist and the Scientists: by artist Peter Trusler

"YORGIA" 2003
Pre-Cambrian Fossil: White Sea Coast, Russia
Watercolour & Gouache on Paper
36.5 x 27.5 cm 68 x 55 x 4 cm
Signed and dated lower right; Trusler 2003
Field study from White Sea Coast Expedition, June-July 2003.
Exhibit ID 12

12



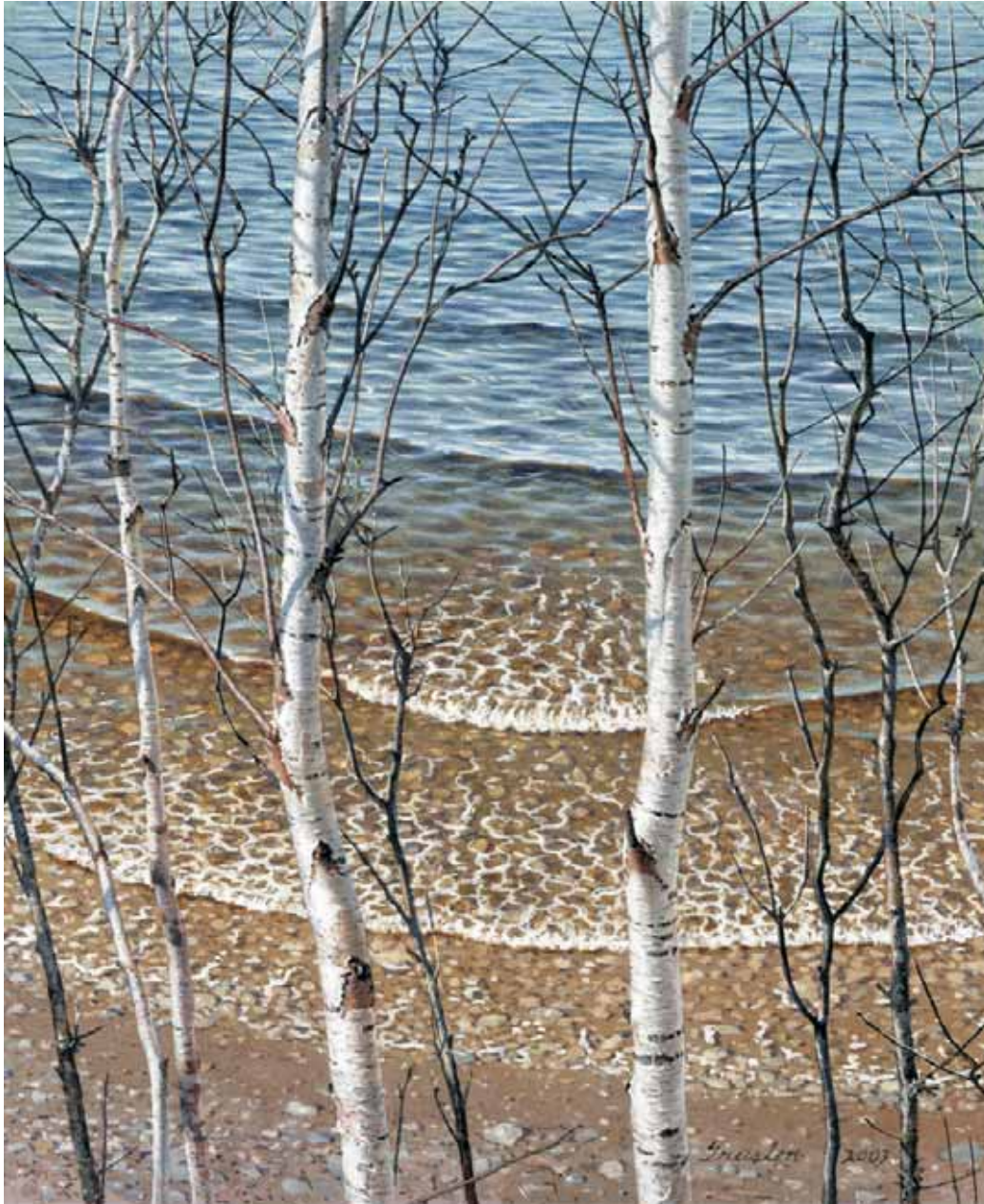
'Yorgia - Winter Coast - Russia'

© Copyright Artist Peter Trusler 2003
Digital File Code: 106 - 256MB at 600ppi at 17x10cm
Printed on Epson Watercolor Paper 190grams Inkapresta EAP Custom Profile
Inkspista Archival 'Giclée' Fine Art Digital Printing & 10-Resolution Scanning +613 9872 9464

The Artist and the Scientists: by artist Peter Trusler

"WINTER COAST" 2003
Watercolour & Gouache on Paper
32 x 26cm 68 x 55 x 4 cm
Signed and dated lower right; Trusler 2003
Field study from White Sea Coast Expedition, June-July 2003.
Exhibit ID 13

13



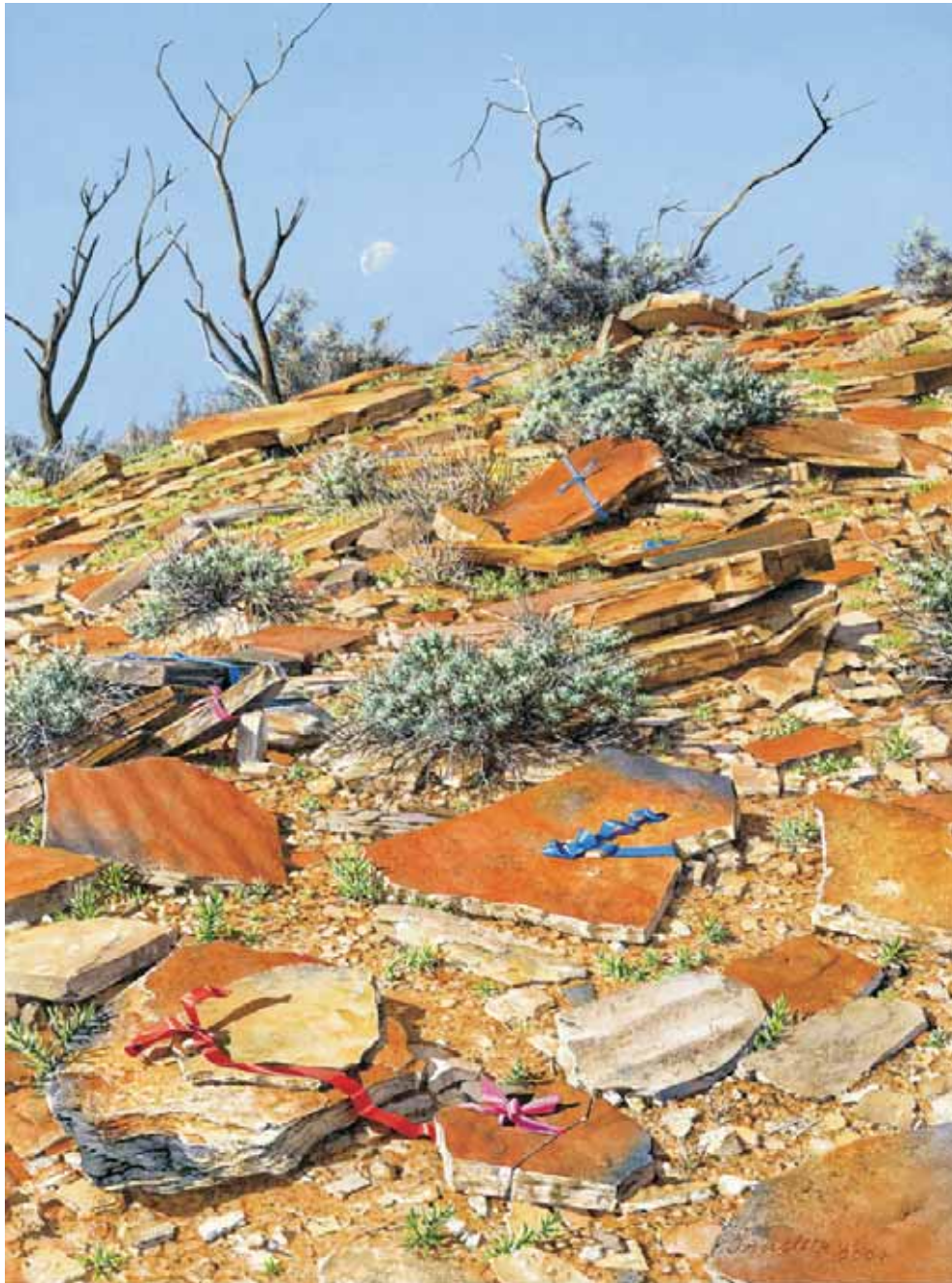
'Winter Coast - Russia'

© Copyright Artist Peter Trusler 2003
Digital File Code: 291. 127MB at 600ppi at 32.5 x 26.3cm
Proofed; Epson Watercolor Paper 190gsm
Inkspecta. Archival 'Giclee' Fine Art Digital Printing &
Hi-Resolution Scanning. Ph +613 9872 6464

The Artist and the Scientists: by artist Peter Trusler

"EDIACARA" 2004
Watercolour and Gouache on Paper
37 x 27 cm 68 x 55 x 4 cm
Signed and dated lower right; Trusler 2004
Field study of the 'Ediacara South' Precambrian fossil locality after prospecting on 28th June; finds tagged for recording. Nilpena Station.
Exhibit ID 14

14



'Ediacara - Australia'

© Copyright Artist Peter Trusler 2004
Digital File Code: 380. 163MB at 600ppi at 34.5 x25cm
Proofed on Epson Watercolor Paper 190gsm Inkospecta Custom Profile
Inkspecta. Archival 'Giclée' Fine Art Digital Printing & Hi-Resolution Scanning. Ph +613 9872 6464

The Artist and the Scientists: by artist Peter Trusler

"PTERIDINIUM - NAMIBIA" 2006

Watercolour and Gouache on Paper

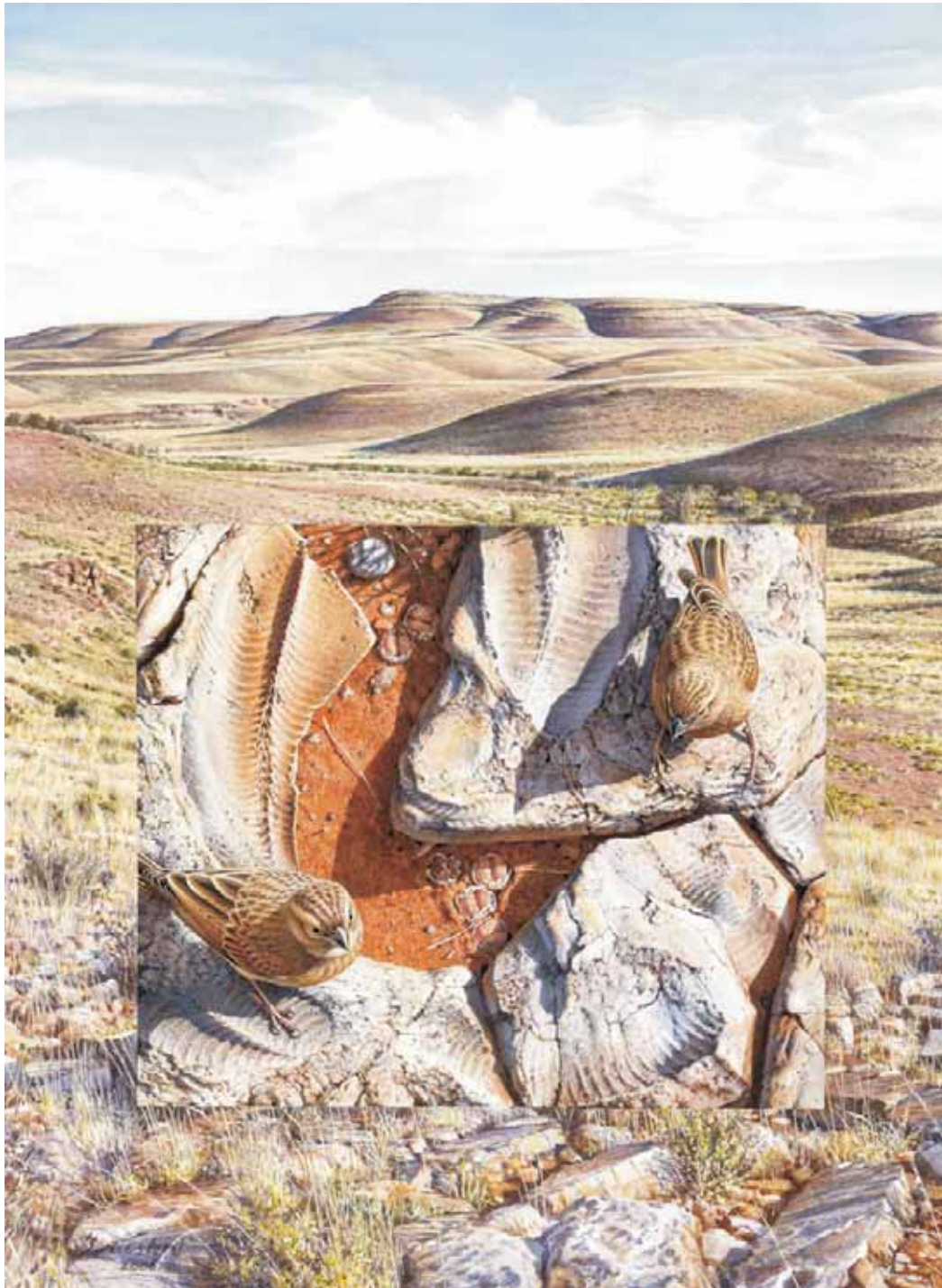
37.5 x 27.5 cm 68 x 55 x 4 cm

Signed and dated lower left; Trusler 2006

Farm Aar landscape from "Pteridinium Hill" Precambrian Fossil Locality. Inset: Weathered Quartzite, Upper Klippek Member of the Dabis Formation of the Nama Group (Ediacaran) with Pteridinium specimens. Living Stones, Lithops species. Lark-like Buntings, Emeriza impetuan.

Exhibit ID 15

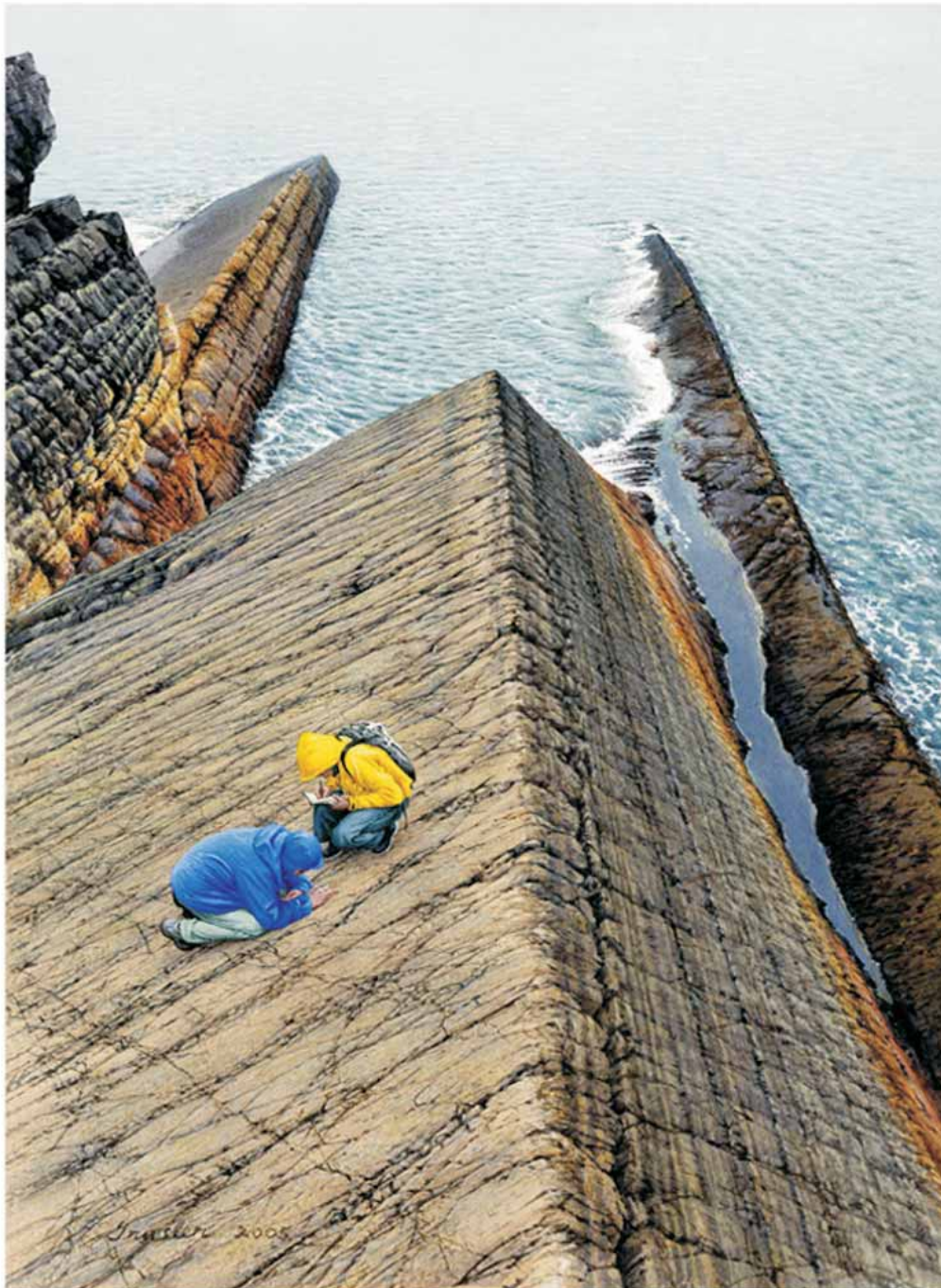
15



The Artist and the Scientists: by artist Peter Trusler

"MISTAKEN POINT" 2005
Rock study from Precambrian Fossil Locality, Avalon Peninsula, Newfoundland.
Watercolour and Gouache on Paper
37 x 27 cm 68 x 55 x 4 cm
Signed and dated lower right; Trusler 2005
Inscribed on verso NAPC Field Trip June 2005.
Exhibit ID 16

16



The Artist and the Scientists: by artist Peter Trusler

"KOOLASUCHUS CLEELANDI" 2004
Reconstruction of South-eastern Australian Early Cretaceous
Oil on Linen
140 x 240 cm 150 x 250 x 10
Signed and dated lower left; Trusler 2002-04
Exhibit ID 18

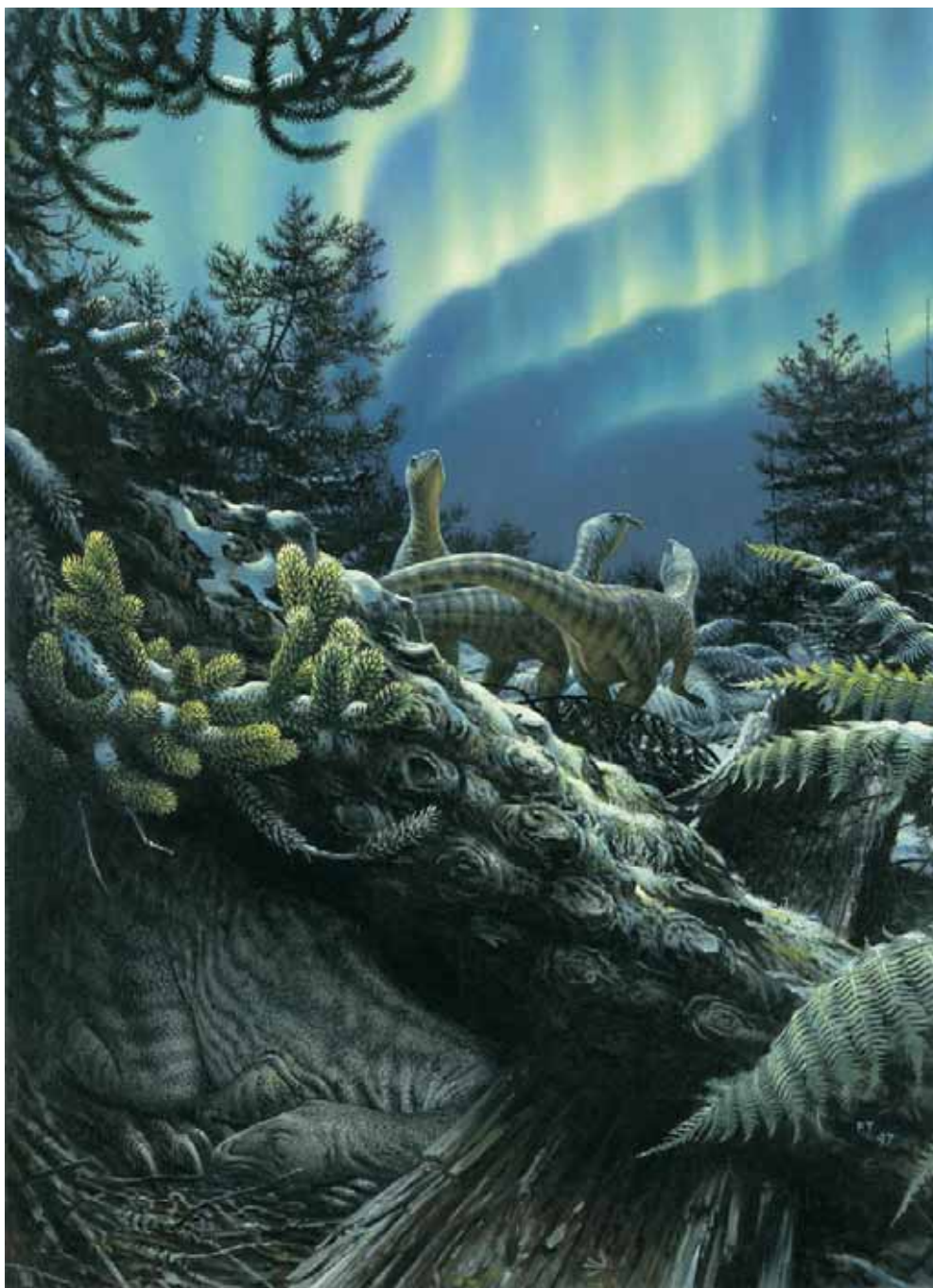
18



The Artist and the Scientists: by artist Peter Trusler

"AURORA" 1997
Reconstructed Scene of the Early Cretaceous 'Polar Winter' of Southeastern Australia. Features *Leaellynasaura* and hibernating *Ornithomimosaur*.
Alkyd Oil on Linen
58.4 x 43.2 cm (23 x 17 ins) Framed
Signed & dated lower right; P.T. '97
Exhibit ID 26

26



© Copyright Artist Peter Trusler 1997
Digital File Code: 465. 406MB at 600ppi at 59 x 43cm
Printed on Breathing Color Elegance 310gsm Inkospecta FAP Custom Profile.
Inkospecta, Archival 'Giclée' Fine Art Digital Printing & Hi-Resolution Scanning. +613 9872 6464

The Artist and the Scientists: by artist Peter Trusler

"LEAELLYNASAURA AMICAGRAPHICA"; CORPSE 1990
Reconstructed Scene of the Otway Basin Early Cretaceous of Victoria, Australia.
Oil on Linen
50.8 x 71.2 cm (20 x 28 ins) 74 x 95 x 5 cm
Signed & dated lower right; Trusler 1990
Exhibit ID 27

27



Leaellynasaura amicographica

Reconstruction of the Leaellynasaura, Victorian Early Cretaceous

© Peter Trusler 1990. All rights reserved.
Reproduction of this work is prohibited without the written permission of the artist.
This work is available for reproduction in the public domain under the Creative Commons Attribution-NonCommercial-ShareAlike license.

The Artist and the Scientists: by artist Peter Trusler
"MEGALANIA & GENYORNIS" 1985
Reconstructed Scene of the Central Australian Pleistocene
Watercolour & Gouache on Paper Framed
34.5 x 53 cm
Signed & dated lower left; Trusler '85
Exhibit ID 31

31



Megalania and Genyornis
© Copyright Peter Trusler 1985

The Artist and the Scientists: by artist Peter Trusler

"GOGO REEF RECONSTRUCTION"1991

A reconstructed underwater scene from the Late Devonian of North-Western Australia;(360 million years before the present.)
Featured are the 'Duck-billed Lungfish', *Griphognathus whitei* and the predatory Arthodire Placoderm, *Eastmanosteus calliaspis*.

Alkyd Oil on Linen over Hardboard

74 x 95 x 5 cm

PETER TRUSLER

Exhibit ID 38

38



The Artist and the Scientists: by artist Peter Trusler

"DROMORNIS STIRTONI"

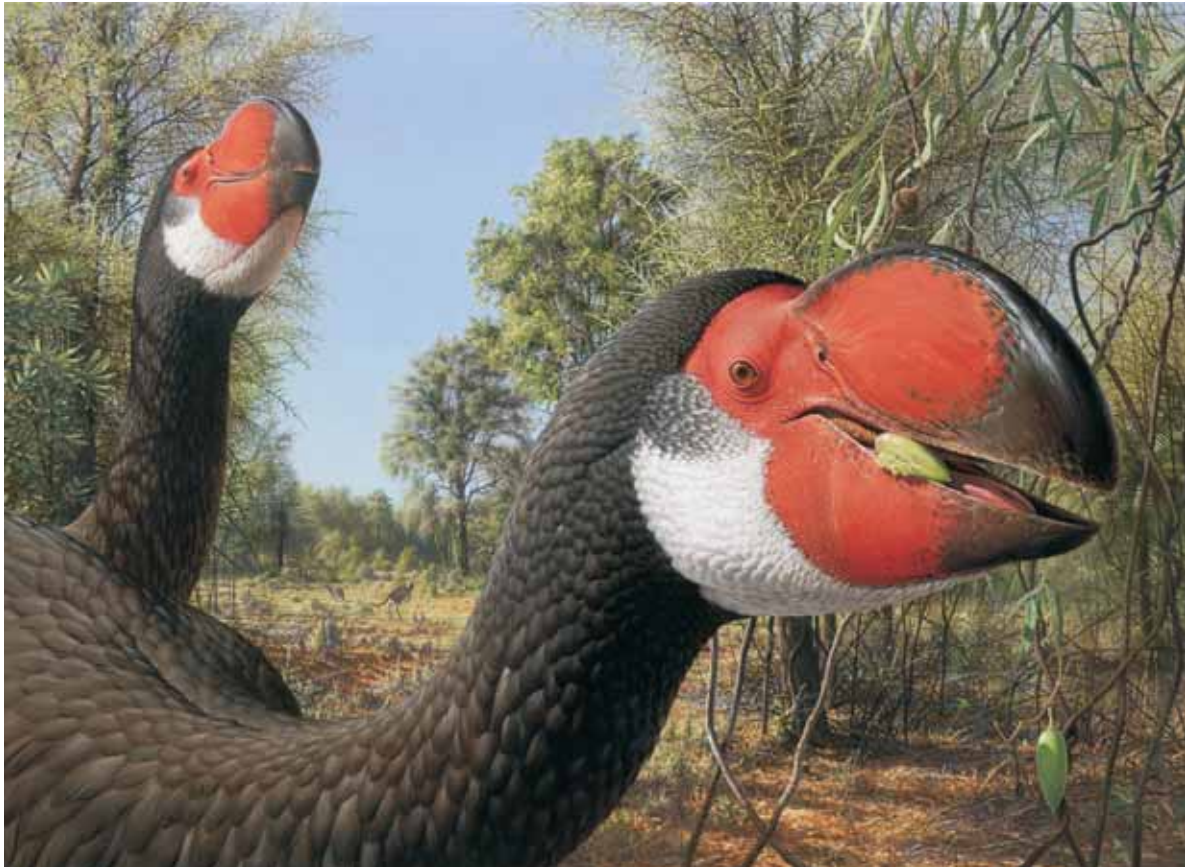
Reconstruction of Central Australian Miocene, Commissioned illustration for Indiana University Press;
Murray and Vickers-Rich, 2003. "Magnificent Mihirungs"

Oil on Linen

71.2 x 96.5 cm (28 x 38 ins) Framed, Signed and dated lower right; Trusler 2002

Exhibit ID 43

43



The Artist and the Scientists: by artist Peter Trusler

"TEHUELCHESAURUS BENITEZII" 1998

Reconstructed Scene of the South American Jurassic.

Watercolour, Gouache & Pastel on Paper

69 x 50 cm

Signed & dated lower left; P.T. '98

Exhibit ID 58

58

