

Welcome to Monash Law

Associate Professor Gerry Nagtzaam, LLB Director
Christina Chandler, Student Recruitment Officer
Monash University Faculty of Law



MONASH LAW COURSE OFFERINGS

Undergraduate

- **Bachelor of Laws (Honours) (LLB)**
- **Double Degrees with Laws**

Postgraduate

- Juris Doctor (JD)
- Master of Laws (LLM)
- Master of Legal Studies
- Graduate Diplomas
- Graduate Certificates



MONASH LLB - BACHELOR OF LAWS (HONOURS)

Single Degree: 4.25 years

- Undergraduate degree leading to legal practice
- Double degrees in one extra year
- Law electives and specialisations
- Guaranteed clinical legal experience
- Overseas study options
- Professional recognition of degree



Monash Law Double degrees (+1 additional year)

Bachelor of Laws (Honours) and

- Bachelor of Arts
- Bachelor of Biomedical Science
- Bachelor of Commerce
- Bachelor of Computer Science
- Bachelor of Criminology
- Bachelor of Engineering (Honours) (+2 years)
- Bachelor of Global Studies
- Bachelor of Information Technology
- Bachelor of Music
- Bachelor of Politics, Philosophy and Economics
- Bachelor of Science



LLB Classes and Electives

Required classes:

- ❖ Foundations of law
- ❖ Litigation and dispute resolution
- ❖ Lawyers ethics in practice
- ❖ Evidence
- ❖ Public law and statutory interpretation
- ❖ Criminal law 1
- ❖ Constitutional law
- ❖ Administrative law
- ❖ Criminal law and procedure 2
- ❖ Torts
- ❖ Contract A & B
- ❖ Property A & B
- ❖ Equity
- ❖ Corporations law
- ❖ Trusts

Electives:

- AI, technology and the law
- Animal law
- Australian commercial law
- Biotechnology and the law
- Challenging government: Law reform and public advocacy
- Competition and consumer law
- Construction law
- Copyright and designs
- Current problems in criminal law
- Entrepreneurship and the law
- Family law
- Family property and financial disputes
- Indigenous peoples and the law
- International commercial arbitration
- International environmental law
- International human rights
- International investment law
- International refugee law and practice
- Law of employment
- Legal issues in medicine
- Legal philosophy
- Negotiation and conflict resolution
- Non-adversarial justice
- Patents, trademarks and unfair competition
- Private investment law
- Sport and the law
- Succession law
- Taxation law
- The death penalty: Law, politics and advocacy
- The law of financial transactions
- The media and the state
- Trial practice and advocacy
- Vis arbitration moot
- World Trade Organisation (WTO) law

Entry Requirements and Pathway Options



MONASH LLB - Entry requirements

ATAR lowest selection rank of 97.1 (2022)

Australian VCE subject requirements	IB subject requirements
<p>English</p> <p>Units 3 & 4: at least 30 in English (other than EAL) <i>or</i> at least 35 in English (EAL)</p>	<p>English</p> <p>At least 5 in English SL or 4 in English HL <i>or</i> 6 in English B SL or 5 in English B HL</p>



Options for students who do not meet the ATAR for Monash Law

Internal Transfers	Transfer from other Australian universities
<p>Apply for an internal transfer into Law:</p> <p>Start in another Monash degree and then transfer to Law:</p> <p>Students must have completed <u>minimum 24 credit points</u> (max 96 CPs) and a <u>Distinction average</u> (70% or above) to be competitive for Law.</p> <p>Credits may be applied as non-Law electives for a Law degree, or credit toward the second degree.</p> <p>Students may apply after one semester, but Semester 2 intake is not available every year.</p>	<p>Transfer from another university to Monash Law:</p> <p>Complete <u>at least one year</u> (48 Monash credit points) and <u>no more than two years</u> (96 Monash credit points) of a recognised undergraduate degree <i>and</i> Achieve a <u>Distinction average</u> (70% or above) across all university units.</p> <p>Students may apply after one semester, but Semester 2 intake is not available every year.</p>

https://www.monash.edu/course-transfers/search-study-areas?transfer=1&study_areas=7

The WAM does not guarantee a place. Students are ranked and offered based on the number of places available, so the actual cut off can be much higher.

Pathway options into Monash Law

The Monash Guarantee

(<https://www.monash.edu/study/how-to-apply/entry-schemes>)

The Monash Guarantee can help students access a Monash course even if you don't reach the course's lowest selection rank. You could be eligible for the Monash Guarantee if you:

- **have experienced financial disadvantage**
- **live in a low socio-economic area**
- **are an Indigenous Australian**
- **attend a Monash list under-represented school**

If you meet the eligibility criteria, achieve the Monash Guarantee ATAR and complete all course prerequisites, you will be eligible for a place at Monash.

The Monash Guarantee ATAR for Law in 2022 is 94.

Students may need to complete a SEAS application and submit supporting documentation to VTAC when applying.

The Pathways to Law Program (<https://www.monash.edu/law/future-students/undergraduate/pathways/information>)

To apply, students need to complete a Special Entry Access Scheme (SEAS) application through VTAC, achieve an ATAR of 90, and apply for one of the following degrees:

- Bachelor of Arts (Law Pathway)
- Bachelor of Commerce (Law Pathway)
- Bachelor of Science (Law Pathway)

Students may be eligible for this Pathway if they meet one of the following criteria:

- **have experienced financial disadvantage**
- **live in a low socio-economic area**
- **are an Indigenous Australian**

In the first year, you study four law units along with four Arts, Commerce or Science units. If you pass all the units (48 credit points) with a credit (60%) average in your Law units and a credit (60%) average overall, you are **guaranteed** a place in:

- second year of the relevant double degree course, OR
- second year of the Bachelor of Laws (Honours).

If you don't meet the entry requirements you can continue the relevant single degree course (Arts, Commerce or Science) with credit for any subjects you have passed.

Scholarships for Monash Law students

Scholarship	Benefit
Monash Law School Equity Scholarship (<i>Domestic</i>)	<p>Comprises of a \$30,000 scholarship value.</p> <ul style="list-style-type: none">• \$6000 per annum• Travel allowance for one return airfare (Interstate studentS)• Partnered Mentor that provides access to a variety of networks, advice and advocacy• Priority access to accommodation at Monash Residential Service (MRS)
Susan Campbell Equity Scholarship (<i>Domestic</i>)	<p>Comprises of a \$6000 scholarship value.</p> <ul style="list-style-type: none">• Invitation for first-year students to apply at Monash leadership program, Monash Minds
Monash Support Scholarship (<i>Domestic</i>)	<p>Comprises of a \$15,000 scholarship value.</p> <ul style="list-style-type: none">• \$3000 per annum
Vice-Chancellor's Scholarship for Excellence (<i>Domestic</i>)	<p>Comprises of a \$4000 scholarship value .</p> <ul style="list-style-type: none">• \$2000 one-off payment in your first year of study, followed by an additional \$500 in every subsequent year for the duration of your degree.• Invitation for first-year students to apply at Monash leadership program, Monash Minds

<https://www.monash.edu/study/fees-scholarships/scholarships>

Other features to consider at Monash Law



MONASH GUARANTEED CLINICAL LEGAL EDUCATION

Clinical Legal Education

Gain experience in various legal fields, learning while you work.

Collaborate with Legal Professionals

Build a network and expand opportunities for future work or connections. .

Level up Technical Legal Skills

Collaborate with legal professionals and work with clients on real cases.

12-16 weeks of clinical practice, for credit, supervised by a professional in the legal field.





MOOT COURT

A purpose-built \$4 million facility and the first of its kind in Australia, the **Monash University Moot Court** provides an unparalleled forum for engaging students and encouraging the ingenuity and practical skills central to a modern legal education.



MOOTING COMPETITIONS

Monash Law students regularly practice and compete in Mooting competitions in Australia and worldwide. All Monash Law students have the opportunity to participate in these activities.

The Monash Law Global Footprint



20+
partner
universities

3

CAMPUSES

**STUDY ABROAD
EXPERIENCES**

350+

17,000+

**ALUMNI AROUND
THE WORLD**



MONASH INTERNATIONAL STUDY OPPORTUNITIES

The Monash Faculty of Law offers students the opportunity to study law at other locations around the world:

Dual Degree Programs:

- King's College London
Master of Laws (LLM)
- University of Oxford
Bachelor of Civil Law (BCL) or Masters in Law and Finance (MLF)
- University of Cambridge
Master of Laws (LLM) or Master of Corporate Law (MCL)

Short-Term Programs:

- Monash campus in Prato, Italy (Semester, Winter, Summer terms)
LLB / Graduate Diploma / LLM / JD
- Monash campus in Kuala Lumpur, Malaysia
LLB / Graduate Diploma / LLM / JD
- Many partner universities and locations for study abroad exchanges!



Additional support for Monash Law students



Accommodation for Students

Clayton Urban Community

- Studio apartments with private bathroom and kitchenette

Clayton Residential Village

- Halls of Residence with private rooms, shared common areas
- Weekly prices (2022) from \$263-314
- Accommodation scholarships available



Safety & Security

Peace of mind with secure accommodation and security assistance on hand 24/7 to ensure your safety and well-being.



All-Inclusive Rates

Worried about managing your bills? Not at MRSI! The all-inclusive rental rates include water, gas, electricity, laundry, internet and car parking*.



Social Engagement

Join in on the fun! The jam packed calendar of social, sporting and cultural events means there is always something to get involved in.



24/7 Residential Support

Have a question or need some advice? The live in Residential Support Team includes both your peers and professional staff who offer guidance and help connect you with support services available at Monash.



Orientation & Transition

Make friends from the very first day! Our orientation and transition program helps you to easily settle into life on campus.



Proximity to Classes

Late for class? No change for public transport? No problem - your class is only a short walk away!



High Speed Internet

Unlimited high speed internet access to ensure you can easily work online and stay connected. And at no extra cost!



Higher Pass Rates

Get the best grades you can! On average students who live on campus have a higher pass rate than those who don't.



Leadership & Development

Interested in contributing to your community and growing your skill set? Residential Advisor, Orientation Team and Hall Society roles are just the beginning!

Clubs and societies on campus

Hundreds of groups for students to join through Monash Student Association



Islamic Society, Monash University (MUIS)

Category
Spiritual



Italian Club, Monash University

Category
Cultural



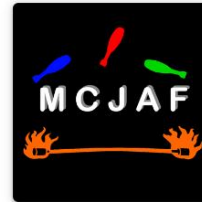
Japanese Club, Monash (MJC)

Category
Cultural



Jewish Students Society, Monash (MonJSS)

Category
Cultural



Juggling and Firewirling, Monash Club of (MCJAF)

Category
Special Interest



Korean Appreciation Student Association (KASA)

Category
Cultural



Labor Unity Club

Category
Political



Law Students' Society Inc., Monash (LSS)

Category
Academic



Liberal Club, Monash University (MULC)

Category
Political



Linguistics Society (LingSoc)

Category
Academic

Learn HQ - Student Academic Support

Academic support services for all Monash students - from time management or organisation to academic research and writing, Learn HQ is a one-stop shop to support students.

Adjust to university expectations

Studying at university



Starting or returning to university study is a big step in your journey. There will be a lot to learn and adjust particularly if you are transitioning from high school or from the workplace. Knowing what to expect can help you be more prepared. University expectations reflect the way learning and teaching is structured at university and the beliefs underpinning the way we work. These aspects involve:

- Academic culture, including the shared beliefs, values and expectations at a university.
- Expectations, including the way your course is structured and the way students are expected to learn.

Get started with your writing



- Master academic language
- Brainstorm and mind map
- Write productively

Write like a pro

Develop your writing skills for any assessment or task, learn new writing strategies and master academic writing.

Improve your writing



- Write clearly
- Find, express and maintain your writing voice
- Edit and proofread like a pro
- Use the Academic Language

Acknowledge your sources



- Paraphrase, summarise and quote well
- [Library guide to referencing](#)
- Dos and don'ts of academic integrity
- How to avoid unintentional breaches of academic integrity

Manage complex tasks



Get organised to get it done

Approaching a complex task such as a research project assessment or a thesis at honours or postgraduate level will require you to be highly organised and self-directed. You must plan and manage large blocks of unstructured time, work independently to meet distant deadlines, and juggle short and long-term commitments. Although liberating, this autonomy can also pose significant challenges.

Some ways to help you to plan, prioritise, stay on track and meet your deadline include:

- 1 breaking down the task
- 2 tracking your progress
- 3 managing competing commitments.

Break down the task

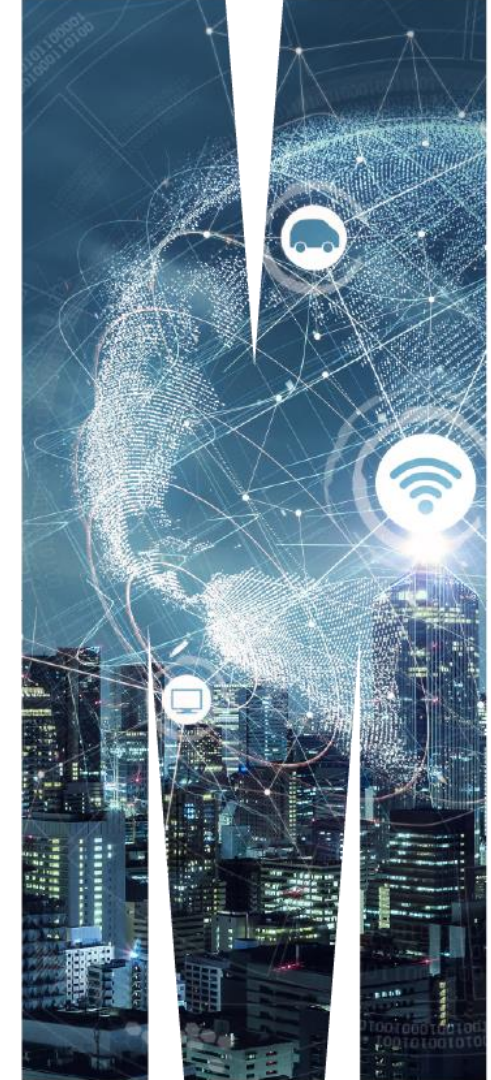
Breaking down a task into smaller pieces makes it easier to manage. You can then focus on one piece at a time.

When you are working on a task, you can start with checking the assessment instructions to understand the assessment requirements.

Where can a law degree
lead me?



Careers in Law	Careers Outside Law
<ul style="list-style-type: none"> ○ Lawyer / Barrister / Solicitor ○ Corporate in-house legal counsel ○ Working in leading national and international law firms ○ Legal recruitment and consultancy ○ Government or civil service ○ Academic or legal research ○ Paralegal or judge's assistant ○ Community legal services ○ Specialist legal firms, practising in particular areas of the law: Human Rights, Family Law, Real Estate, Criminal, Corporate Law 	<ul style="list-style-type: none"> ● Publishing, Media, Journalism ● Marketing and Communications ● Sports, Music, Film industry ● Politics and Government, Diplomacy ● Business Management ● Negotiation / Conflict Resolution ● Scientist, Engineer ● Environmental Protection or Development ● Banking, finance, accounting, tax advising ● International or Non-governmental organisations ● Activism, Human Rights, Advocacy ● Public Health ● Teacher or Professor ● Law Enforcement ● Artist, Actor, Musician, Designer



Alumni

Where do Monash Law graduates go?

Legal Practice

Community Service

Human Rights

Business

Politics

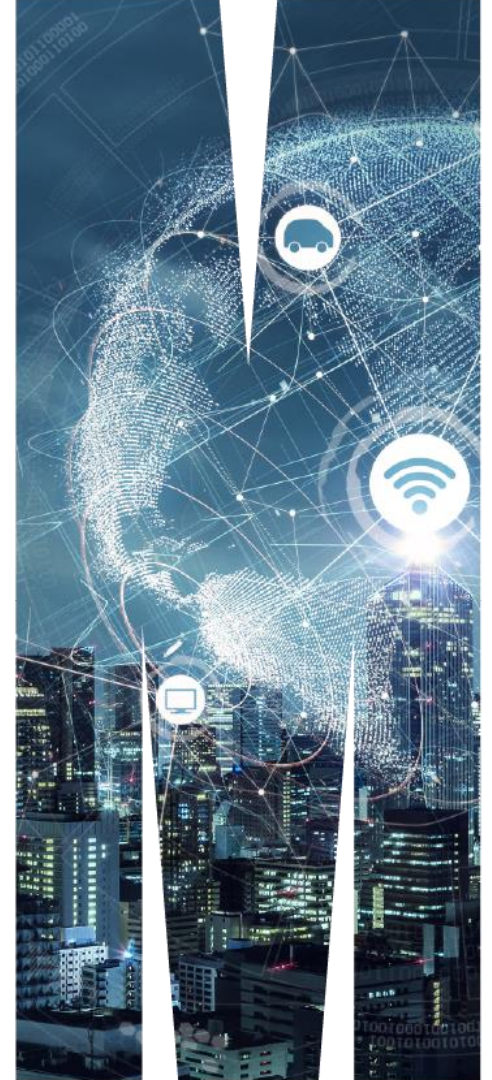
NGOs

Tech/IT
Affairs/Diplomacy

Telecommunications

Foreign

Rhodes Scholars: Scholarships to study at Oxford University



QUESTIONS?

