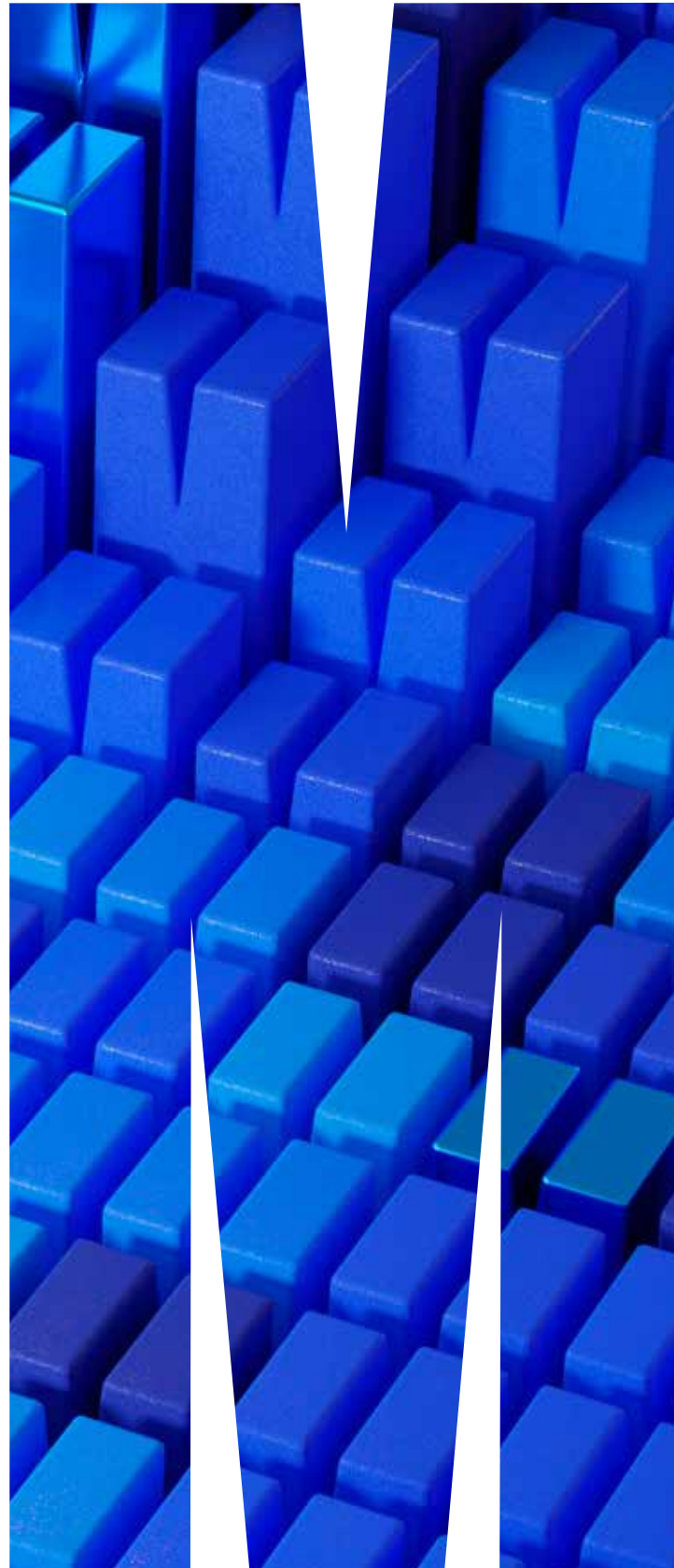
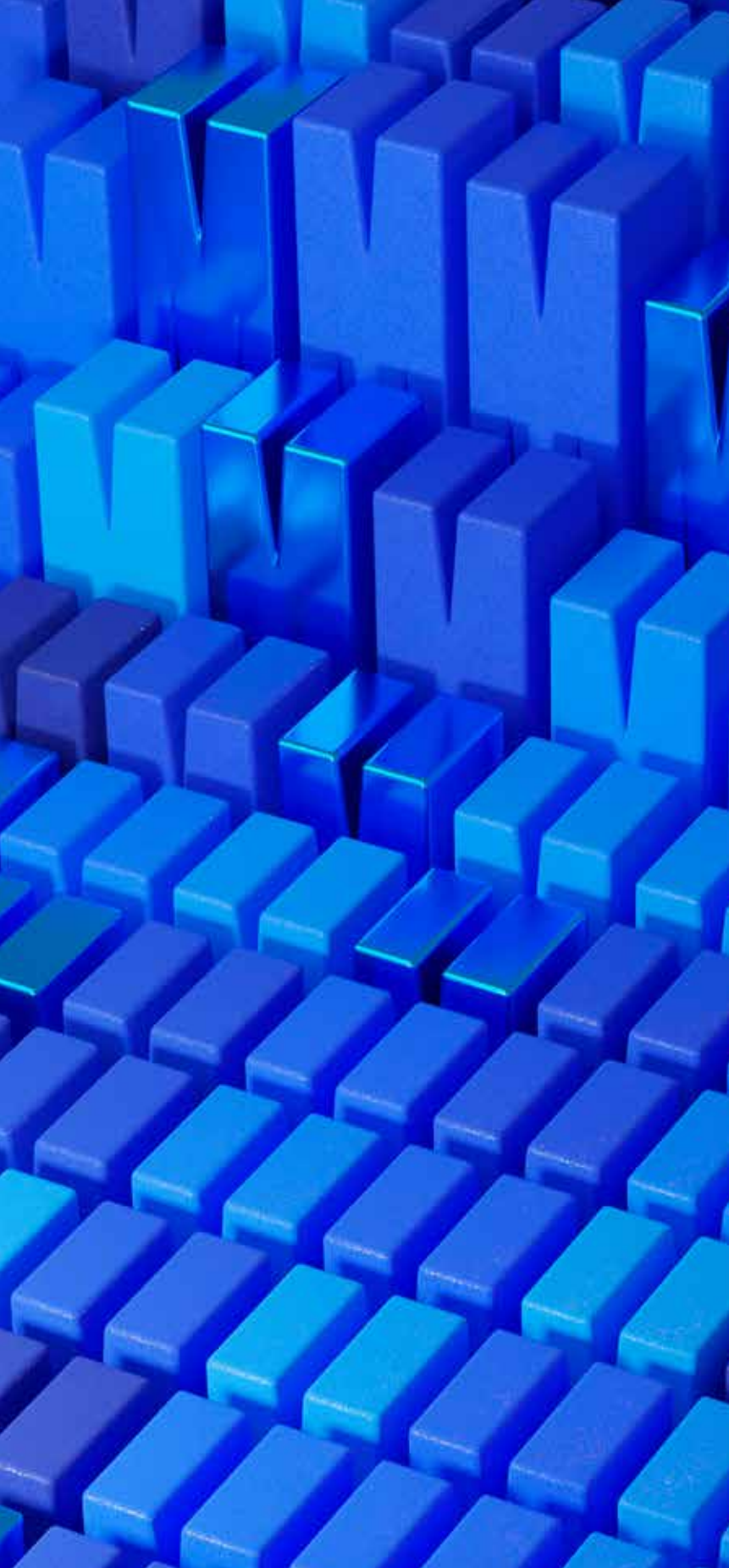


**UNDERGRADUATE  
COURSE GUIDE**  
2023



# IF YOU DON'T LIKE IT, CHANGE IT.

For 60 years, we've been working to change the world, and we're not about to stop. At Monash, we see challenges as opportunities to make things better.

It's hard to imagine a time when the need to make positive change has been greater than now.

We want you to help us do it.

Whether you want to change your life, your career, your community or the world, your journey starts at Monash.

As a university with a global footprint, we know we have to play our part in solving the problems facing the world.

That's why all Monash students, lecturers, researchers, professional staff, alumni and supporters contribute to making real change.

You, too, have the opportunity to step up and make a difference.

Are you ready?

**Ready to make a change?  
Click here to learn more.**





# A GLOBAL COMMUNITY

Monash University is truly a global university. Our main base is in Australia, but our presence extends to locations in China, Malaysia, Indonesia, Italy and India. We also deliver awards in partnership with many international teaching institutions. Through our shared values, experiences and goals, we are more connected now than ever.

Each Monash campus has its own personality, and all are friendly, welcoming communities where you'll feel at home.



## TOP 100 RANKINGS

**#40** IN THE WORLD  
US NEWS AND  
WORLD REPORT  
(2022)

**#57**  
TIMES HIGHER EDUCATION  
WORLD UNIVERSITY  
RANKINGS  
(2022)

**#58**  
QS WORLD UNIVERSITY  
RANKINGS  
(2022)

**#66**  
QS GRADUATE  
EMPLOYABILITY  
RANKINGS  
(2020)

## ITALY

### Prato

In the heart of Tuscany and close to Florence, Prato is our European base where eight of our faculties offer units covering design, law, business and more.

## MALAYSIA

### Kuala Lumpur

Monash University Malaysia is our third-largest campus, with more than 8000 students undertaking courses offered across seven schools.

## INDONESIA

### Jakarta

Research intensive and industry engaged, Monash Indonesia is a postgraduate campus for future leaders – those seeking master's and PhD degrees, as well as executive programs and micro-credentials.

## MELBOURNE AUSTRALIA

Monash University recognises that its Australian campuses are located on the unceded lands of the people of the Kulin nations, and pays its respects to their elders, past, present and emerging.

### Clayton

Our biggest campus, home to 38,000 students and nine of our ten faculties. Everything you need is on campus – food outlets, sporting facilities, health services and more.

### Caulfield

Our Caulfield campus hosts 19,000 students and is our base for Art, Design and Architecture, and Monash Business School as well as some Arts and IT courses.

### Parkville

Our dedicated Pharmacy and Pharmaceutical Sciences campus hosts 2000 students and is part of Australia's leading health and biomedical precinct.

### Peninsula

A coastal home to approximately 4000 students, our Peninsula campus offers courses from the Faculty of Education and select courses from Monash Business School. Partnering with leading players in primary and allied healthcare, we also offer a number of courses from the Faculty of Medicine, Nursing and Health Sciences.

## INDIA

### Mumbai

Bustling Mumbai is home to the IITB-Monash Research Academy, a collaboration that gives PhD students opportunities to work closely with industry to find solutions to global problems.

## CHINA

### Suzhou

The Southeast University-Monash University Joint Graduate School offers master's and PhD study options in areas ranging from industrial design and IT to business.

## A WORLDWIDE UNIVERSITY

# #80

ACADEMIC RANKING OF  
WORLD UNIVERSITIES

(2021)

# 3

INTERNATIONAL  
TEACHING  
LOCATIONS

# 6

CAMPUSES

# 100+

PARTNER  
UNIVERSITIES  
ACROSS THE GLOBE





# EMERGE READY

We challenge you to let your education change your mindset – think differently about anything and everything to make your impact in the world.

By choosing Monash you've chosen a university that's ranked in the world's top 100<sup>1</sup>. You'll study alongside world-class educators and researchers in a degree or double degree designed to provide you with breadth, flexibility and choice.

But employers want more than great results from a leading university. They want to hire graduates who have experience beyond the classroom. Graduates with broad networks and a deep understanding of the world. Graduates who understand industry and have a passion for discovery.

Which is why every Monash student can curate a personal program focused on the challenges that define our world and our future. You'll uncover your passions and build distinctive capabilities, giving you an edge over others – ready to make your impact on the world.

**Global Immersion:** You can take your education global and study at one of our international campuses. And through our Global Immersion Guarantee, you'll work with local leaders to understand and develop innovative and sustainable solutions to real-world problems.

**Industry Immersion:** You can take the first steps in developing your start up or social enterprise. You'll get guidance in developing an entrepreneurial mindset to bring your ideas to life, and become part of the growing start-up community at Monash.

**Research and Discovery:** You'll have the opportunity to work on world-leading research and discovery projects. You can be part of interdisciplinary student teams that will connect with industry as we take our scientific and technical research to another level.

## Employment

From the moment you join Monash, we offer an end-to-end experience that builds your capability and develops your employability. You'll develop in-industry experience and build your networks and relationships – all of which puts you in the best position to pursue your goals.

Our Monash Talent program can help you secure the job you want, and your studies and experiences will have helped you develop the vital transferable skills essential for the modern market place. We want you to be prepared not just for your first job, but for a lifetime of career advancement.

## Professional networks

And our support won't end when you graduate. You'll always be connected with and supported by us, through our active alumni network and continued professional education.

The world needs ready. Whatever your degree, we'll ensure you're ready to create your future today.

[monash.edu/emerge-ready](https://monash.edu/emerge-ready)

1 Ranked No.58 in the world, QS University Rankings, 2022. Ranked No.57 in the world, Times Higher Education World University Rankings, 2022.

# OUR ENTRY SCHEMES TO MONASH

We know life can be a bumpy road, and your ATAR might not accurately reflect your abilities.

No matter the circumstances, we recognise and support talent. That's why we offer schemes to help you enter your preferred course by considering your life circumstances.

## The Monash Guarantee

Every Monash course has a Monash Guarantee ATAR lower than the expected selection rank. You could be eligible for entry through the Monash Guarantee if you:

- have experienced financial disadvantage
- live in a low socioeconomic area
- are an Indigenous Australian
- attend a Monash-listed under-represented school.

[monash.edu/guaranteedentry](https://monash.edu/guaranteedentry)

## Monash Indigenous Entry Scheme

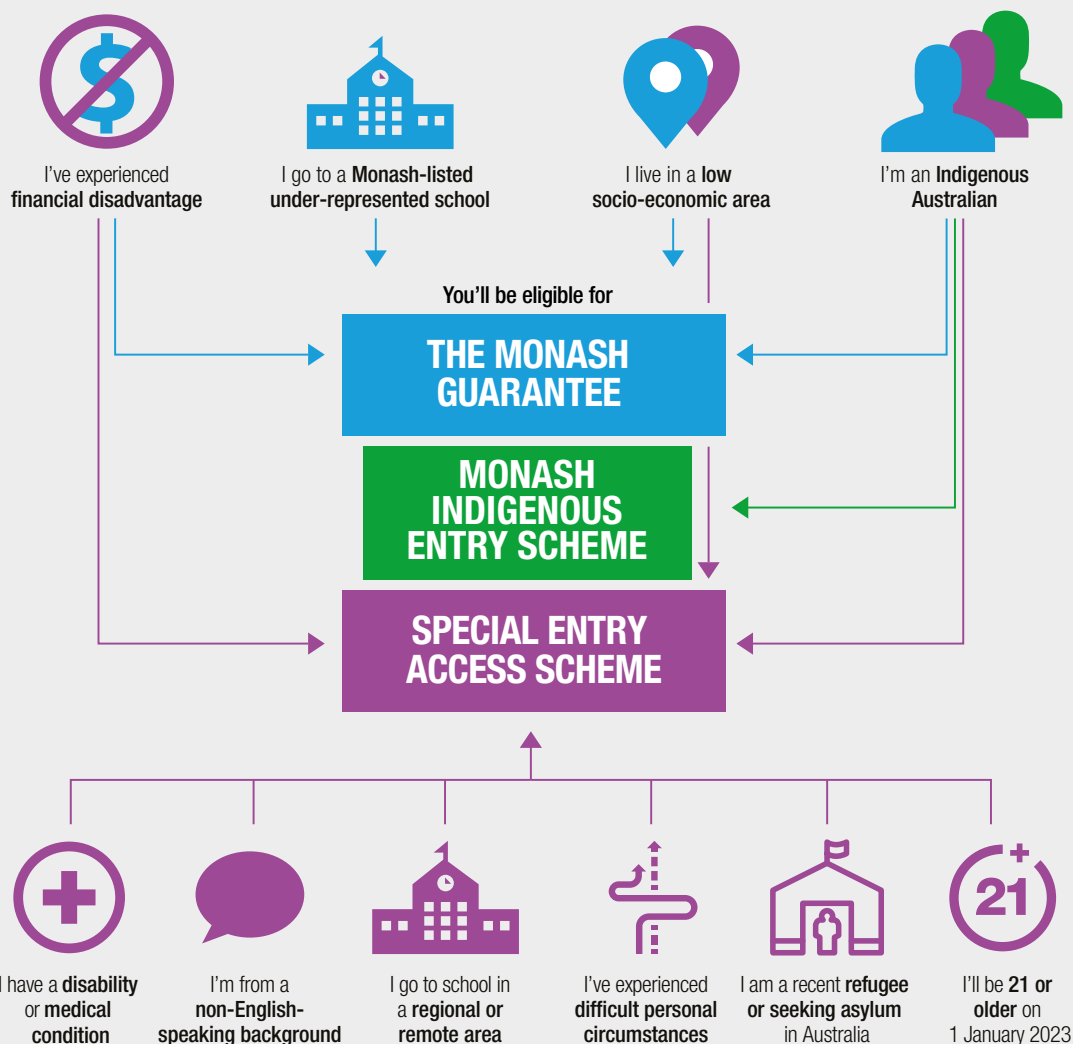
Through VTAC, Indigenous Australian applicants can gain direct admission to a range of Monash undergraduate degrees with an achieved ATAR of 50+ (higher for some degrees). There are no extra requirements of time added to your course when you start a course via this entry scheme.

[monash.edu/study/how-to-apply/indigenous-student-applications](https://monash.edu/study/how-to-apply/indigenous-student-applications)

## Special Entry Access Scheme (SEAS)

SEAS adjusts your ATAR in recognition of circumstances that may have affected your education. The recalculated ATAR will impact your selection rank which is used during the selection process.

Check out our SEAS calculator for an estimate of your SEAS-adjusted ATAR at [monash.edu/seas](https://monash.edu/seas)



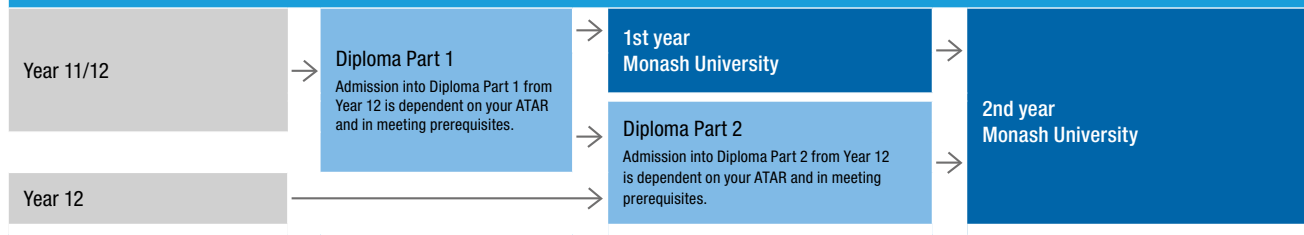


# YOUR PATHWAY TO CHANGE

There are many other pathways into Monash University if you haven't quite met the entry requirements. Whether you're transferring from another university, or want to complete one of our diplomas, if there's a pathway, we'll help you get there.

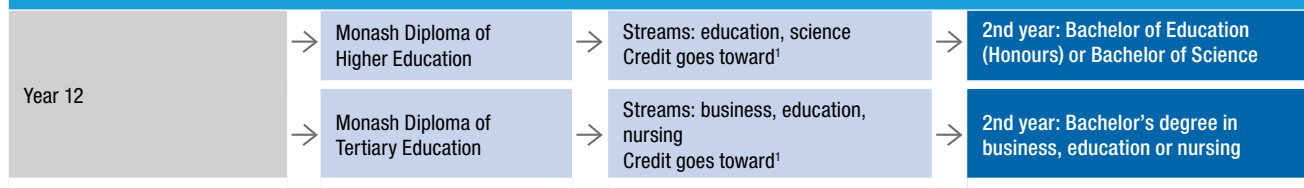
## MONASH COLLEGE

Monash College offers accredited diploma programs that lead to the faculties of Art, Design and Architecture, Arts, Business, Engineering, and Science at Monash University.



## DIPLOMA PATHWAYS

One of our diplomas might suit you if you completed Year 12 but didn't quite meet the entry requirements for your preferred course, if you're returning to study, or would benefit from additional learning support.



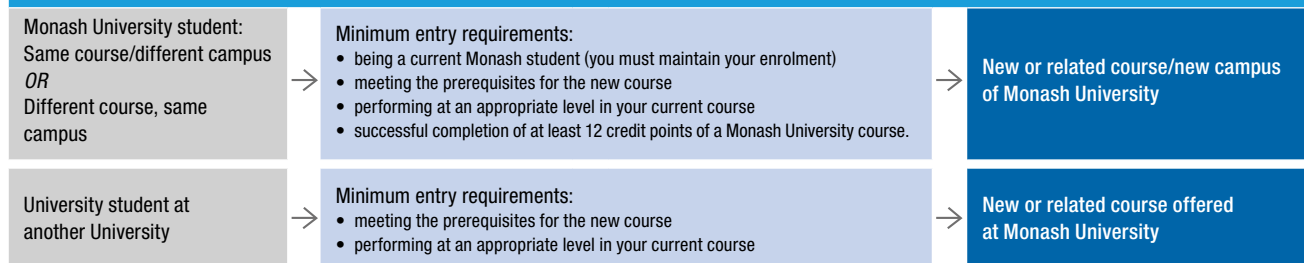
## TAFE/VET TRANSFERS

If you've successfully completed a certificate IV, diploma, or the first year of an advanced diploma, you could qualify for a place at Monash University and may be eligible for some credit towards your course for any graded TAFE/VET studies you've completed<sup>2</sup>.

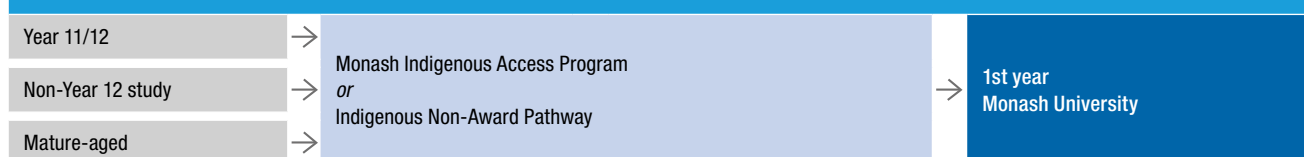


## UNIVERSITY TRANSFERS

If you're already enrolled at Monash, or at another university, there's a way to transfer to your preferred course at Monash<sup>2</sup>.



## INDIGENOUS PATHWAYS



<sup>1</sup> Students must meet all eligibility requirements to be granted a full-year of credit and enter the second year of their chosen degree.

<sup>2</sup> Transfers are limited and not guaranteed.

# SCHOLARSHIPS TO UNLOCK YOUR TALENT

Our doors are open to the curious,  
the optimistic and the change-makers.

Image: The Learning and Teaching building,  
home of the Faculty of Education, Clayton campus.

A scholarship will help you make the most of your time at university. And that's why we have more than 400 types of scholarships. Here's just some of the types of scholarships we offer:

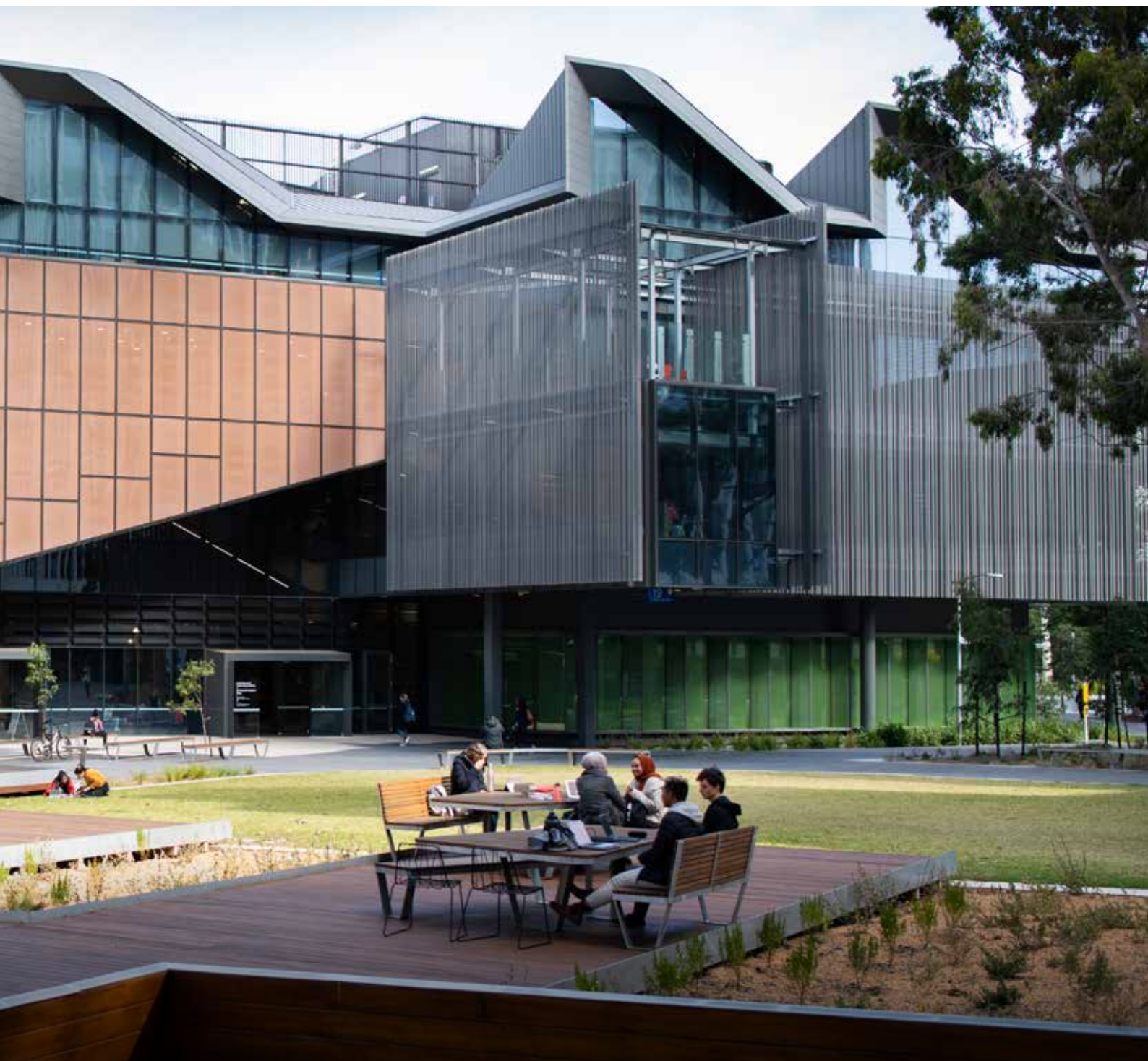
## **Academic scholarships**

We want as many bright minds as possible to benefit from a Monash education. Our Sir John Monash scholarships aim to attract academically gifted students. And our faculties also offer scholarships for academically gifted students. But we also want to recognise those students who want to make a difference in the lives of other students by becoming mentors.

## **Equity scholarships**

We recognise that sometimes your ATAR doesn't reflect your potential. If you're from a low-income background, have a disability or medical condition, live in a regional or remote area, are from an asylum-seeking background, or have experienced difficult circumstances, we offer scholarships to ensure that none of these factors prevent you from pursuing your dreams.





### **Indigenous students**

We offer many scholarships for Indigenous students, with our faculties also offering opportunities to attend Monash through their own scholarship programs.

### **Accommodation scholarships**

We offer scholarships to help cover the costs of your accommodation, and there are even scholarships to support any relocation costs if you're from a rural area.

At Monash, we believe in giving our students the best chance to achieve their potential.

The number of scholarships and grants offered each year varies. So find the right scholarship for you at [monash.edu/scholarships](https://monash.edu/scholarships)

**Ready to make a change?  
Click here to learn more.**



# THE CHOICE IS YOURS

So, you know exactly what studies you're keen to pursue? Or maybe you want to explore your options? Either way, you can create the course that best suits you.

At Monash, we offer courses where you can specialise from the very start of your studies – perfect if you have something specific in mind.

If you're not sure what to do, you have the flexibility to tailor your studies, allowing you to try units from inside and outside your discipline area to create your major, minor or double major. And along the way, you can revise what units you study as you discover what you most enjoy.

This sample map from a Bachelor of Arts course shows the variety that can be incorporated into your studies:

## YEAR 1

Semester 1	Sociology	French	Professional Futures elective	Marketing
Semester 2	Sociology	French	Professional Futures elective	Marketing

## YEAR 2

Semester 1	Sociology	French	Professional Futures elective	Behavioural Studies
Semester 1	Sociology	French	Professional Futures elective	Behavioural Studies

## YEAR 3

Semester 1	Sociology	Sociology	Human Rights	Behavioural Studies
Semester 1	Sociology	Sociology	Human Rights	Behavioural Studies

■ Major   ■ Arts elective/Minor   ■ Professional Futures   ■ Free elective

Our generalist degrees in arts, business, business administration, commerce, IT, and science offer many possibilities, especially when combined with our double degree options.

Monash has one of the largest offerings of double degree courses, so you can pursue two areas of interest at the same time, broaden your options, and graduate with two qualifications. See pages 54-55 for more information on double degrees.

No matter what your study or career goals, we'll help you get there.

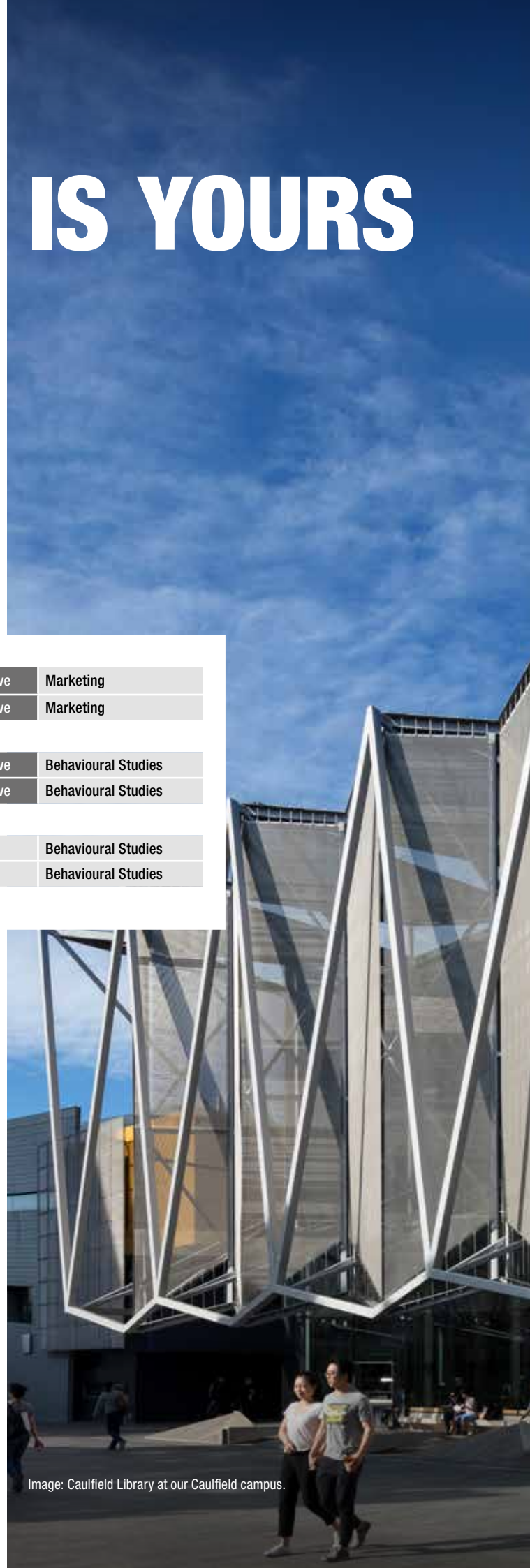


Image: Caulfield Library at our Caulfield campus.



LIBRARY



# CHANGE HOW YOU LEARN. STUDY ABROAD.







Image: Our students celebrating Holi at our Monash Malaysia campus.  
Credit: Photographed by The Monash Gazette.

When you choose to study overseas, it's more than your surroundings that change – you'll experience new cultures and enhance your global perspective.

Many programs are supported by generous scholarships and assistance packages<sup>1</sup>.

### **Semester exchange**

Choose from more than 150 partner institutions in Asia, Africa, Europe and the Americas, gaining credit towards your degree while seeing the world.

### **Global Immersion Guarantee (GIG)**

Available to all first-year Monash students, GIG is a funded fieldwork unit (12 credit points) that takes you to one of six countries at the end of your first year. Flights, accommodation, visas and all program costs are all paid for – you just need to cover some of your food and spending money! This global immersion experience will give you the opportunity to develop your inter-cultural competency, global outlook, and employability.

### **Global study tours**

Complete a unit overseas in two to four weeks. You'll learn from inspiring academics and classmates in places as diverse as China, Fiji, France, Chile, Indonesia or Rwanda.

### **Global work-integrated learning**

Rub shoulders with US Congress, or intern with Oxfam in South Africa. Placements and industry projects are offered for credit as part of most degrees.

### **Swap your seasons**

Make the most of your semester break. Travel to a vibrant city abroad and complete a short study program for credit.

### **Try Malaysia**

Experience our Malaysia campus on the Global Intercampus Program (GIP). You'll also get the benefit of funding packages and in-country support services.

### **Italy awaits**

Spend 4–12 weeks in Prato, Italy, completing a wide range of unit offerings such as Italian, law or criminology.

### **Funding while abroad**

By applying for courses overseas, you're automatically considered for a share of more than \$2 million in scholarships.

### **Go global**

Build a professional network while you're still studying. Our Global Discovery Program taps into the expertise of some of our brightest alumni – students have previously travelled to cities such as London and New York. Learn more at [monash.edu/global-discovery](https://monash.edu/global-discovery).

<sup>1</sup> Our offer of study abroad programs will be dependent on and subject to international travel restrictions. For further information please visit, [monash.edu/study-abroad/study-abroad](https://monash.edu/study-abroad/study-abroad)



# LIVING ON CAMPUS

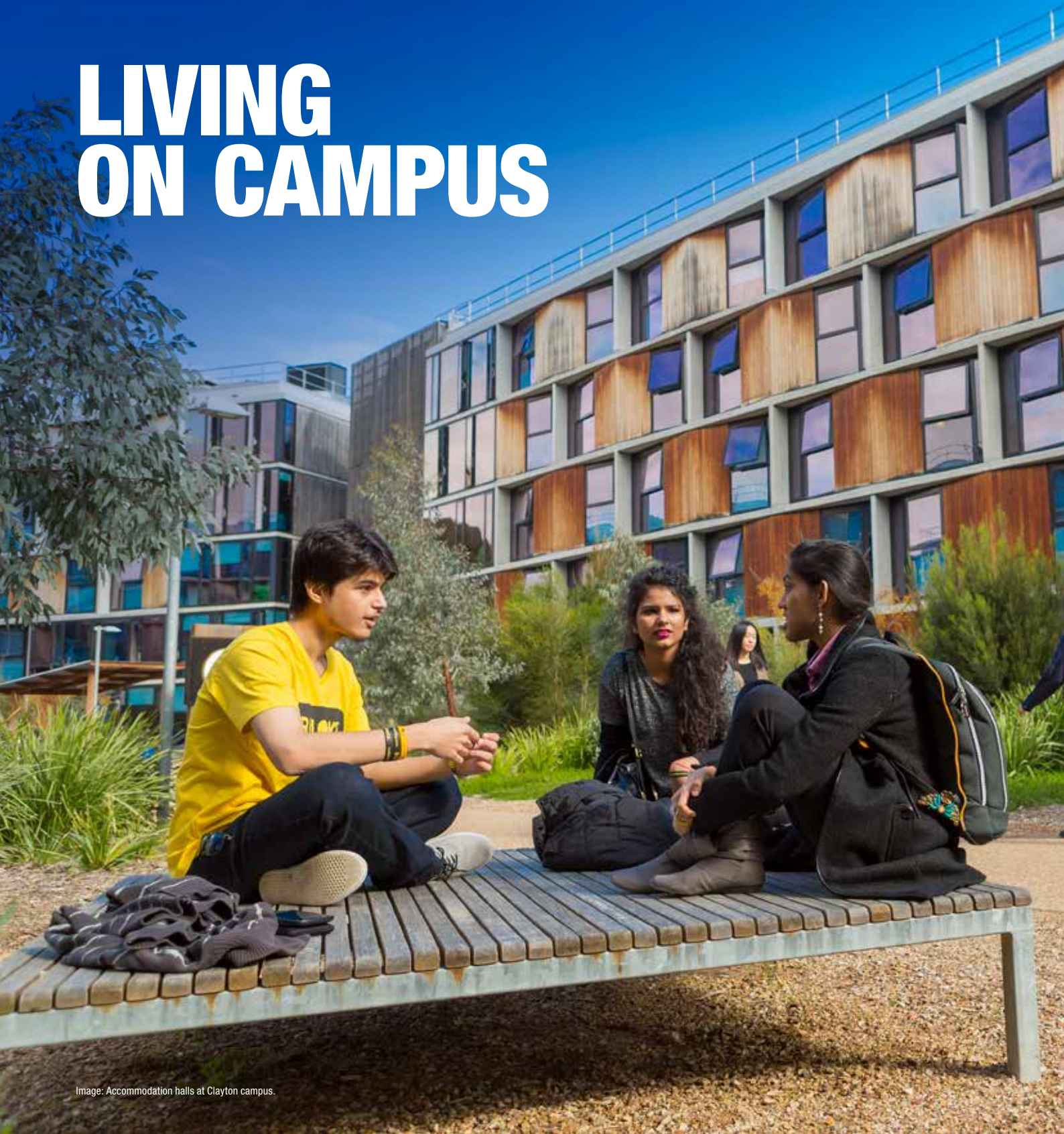


Image: Accommodation halls at Clayton campus.

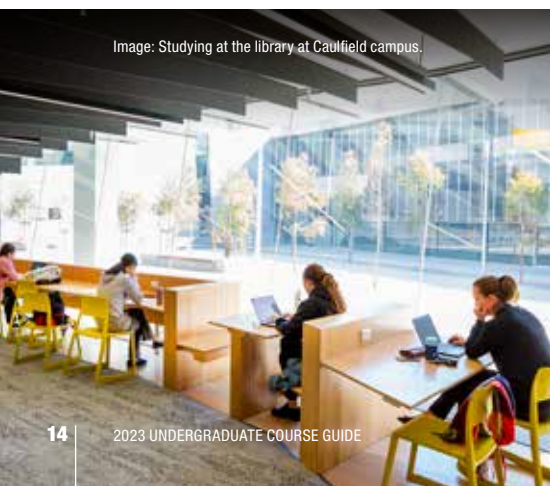


Image: Studying at the library at Caulfield campus.

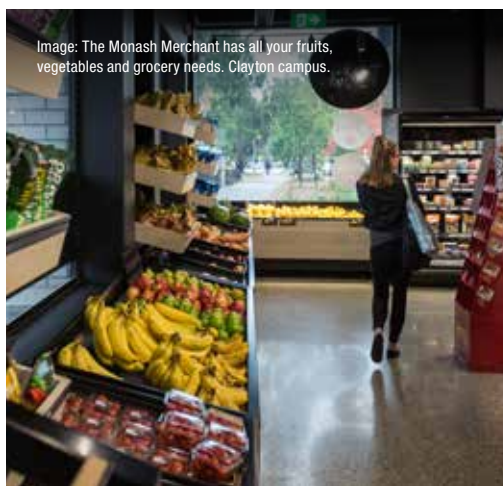


Image: The Monash Merchant has all your fruits, vegetables and grocery needs. Clayton campus.

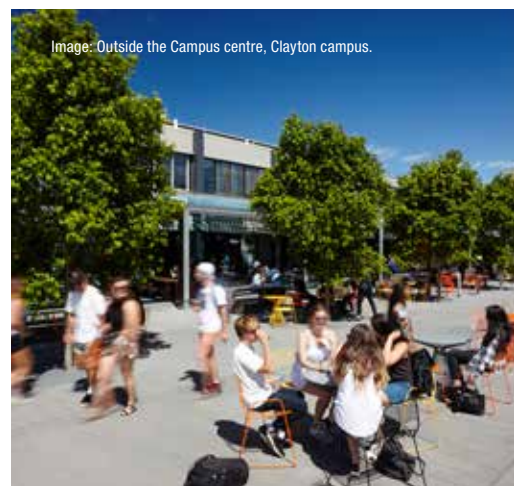


Image: Outside the Campus centre, Clayton campus.





**Click here for an interactive tour of our Clayton campus.**

Start with a short stroll to class before lunch. Study on the lawns in the afternoon. Gyms, sports fields and even restaurants – they’re all on your doorstep if you live on campus.

### ON-CAMPUS ACCOMMODATION

On-campus accommodation is supported by live-in staff and student leaders, making campus life a breeze. There’s also 24-hour security on campus, and a thriving events and activities program to help you settle into your new community.

Prices for on-campus accommodation range from approximately \$250 to \$320 per week<sup>1</sup>. Applications are free and open in September. You can choose from traditional halls of residence, self-contained studio apartments or shared apartments.

With students from over 70 countries and the wide range of facilities on your doorstep, discover why on-campus accommodation is much more than just your room.

[monash.edu/accommodation](https://monash.edu/accommodation)

### Cost of living

Before you begin your studies at Monash, it’s a good idea to plan and prepare a budget.

Here are some costs associated with living and studying in Australia, and should be used as an approximate guide. These figures are estimates only, and may vary depending on your location and lifestyle. Rent, for example, is more expensive in some areas of Melbourne than others. You may also need spending money for things such as medication and other personal items, such as clothes. All costs are subject to inflation. Depending on your chosen degree, additional costs may apply for class materials and other course requirements. Please make sure you check any additional costs for your course before commencing your studies.

### OFF-CAMPUS ACCOMMODATION

- Hostels and guesthouses     \$130 to \$200 per week
- Shared rentals                 \$120 to \$280 per week
- Homestay<sup>2</sup>                        \$290 to \$380 per week
- Rental                                \$200 to \$600 per week

### OTHER LIVING EXPENSES

- Groceries and eating out     \$140 to \$300 per week
- Gas and electricity             \$40 to \$100 per week<sup>1</sup>
- Phone and internet             \$20 to \$40 per week<sup>3</sup>
- Public transport                \$30 to \$60 per week
- Car (after purchase)            \$80 to \$120 per week
- Entertainment                  \$80 to \$150 per week

For more information visit, [studyaustralia.gov.au/english/live/living-costs](https://studyaustralia.gov.au/english/live/living-costs)

<sup>1</sup> The fees for living on campus at Monash University vary depending on the type of accommodation. On-campus accommodation cost includes gas, water, electricity, internet, residential parking permit and laundry. Prices are based on 2022 rates. Prices for 2023 may vary. Details: [monash.edu/accommodation/accommodation/pricing](https://monash.edu/accommodation/accommodation/pricing)

<sup>2</sup> Any student under the age of 18 who chooses to stay in homestay must use the Monash Homestay Accommodation Service (HAS). [monashcollege.edu.au/life-at-monash-college/accommodation/homestay](https://monashcollege.edu.au/life-at-monash-college/accommodation/homestay)

<sup>3</sup> Prices shown here are based on a typical three-bedroom house.

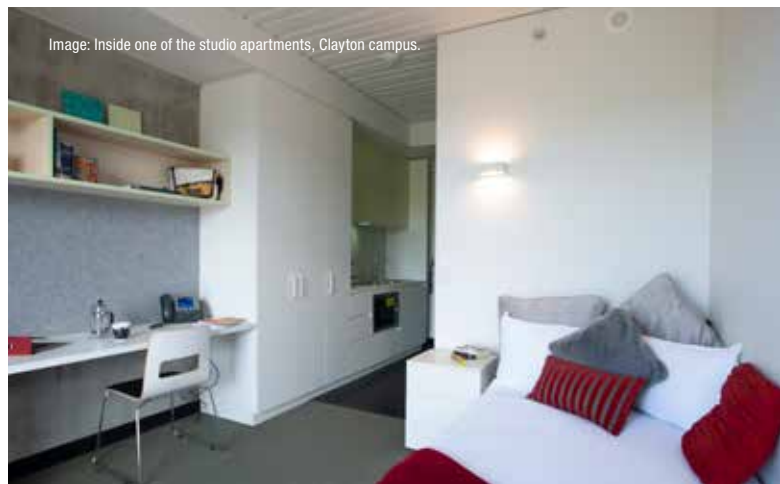
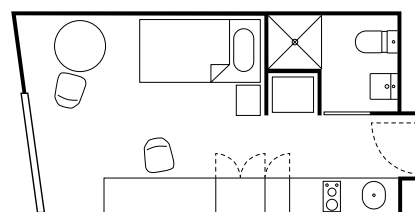


Image: Inside one of the studio apartments, Clayton campus.



Sample studio room



# WE'LL SUPPORT YOU

Choose from a vast range of clubs, make friends and share unforgettable experiences.

We offer a range of student support services to make sure you get the most out of university life, including study skills, mentoring support, health and wellbeing services, financial aid, technology assistance, education and professional goals, and more.

We can also put you in touch with like-minded people to share information, build networks and get the support you need throughout your Monash studies. We recognise the richness and depth of our Monash community, and are committed to diversity and inclusion.

Visit [monash.edu/students/support](https://monash.edu/students/support) to learn more about:

- Monash Connect (support with enrolment, fees, accommodation and more)
- Career Connect (career, leadership and volunteer opportunities)
- cultural inclusion
- clubs and associations
- safety and security
- student news
- the William Cooper Institute – a hub for Aboriginal and Torres Strait Islander study, learning and engagement
- events and activities
- study programs
- self-development
- medical, dental, counselling and other health services
- disability support
- LGBTQia+ support
- child care and parenting rooms.

We also have a peer mentoring program, to help you adjust from high school to university. Every first-year student will receive mentoring from a senior student in the same faculty.

Details: [monash.edu/about/peer-mentoring](https://monash.edu/about/peer-mentoring)

**Click here** to see how you can use social networking tool aMigo to connect with other new Monash students before commencing your studies.



Image: Gardens between the Menzies building and the Campus centre, Clayton campus.







# OUR COURSES

Choosing what to do at uni is an adventure. It's about discovery, passion and realising your dreams. At Monash, we offer a range of courses that allow you to fulfil these ambitions. Use the index below to find your course of interest.

[monash.edu/study](https://monash.edu/study)

## ART, DESIGN AND ARCHITECTURE

**Architectural Design** 20

**Design** 20

- Communication design
- Industrial design
- Spatial design
- Collaborative design

**Fine Art** 21

- Fine art
- Art history and curating

## ARTS, HUMANITIES AND SOCIAL SCIENCES

**Arts** 22

26 majors, 33 minors

**Criminology** 24

**Criminology and Policing** 24

**Global Studies** 25

- Cultural competence
- Human rights
- International relations
- International studies

**Media Communication** 25

- Journalism
- Media
- Public relations
- Screen

**Music** 26

- Composition and music technology
- Music performance
- Popular music

**Politics, Philosophy and Economics** 26

- Politics and governance
- Philosophy
- Economic analysis

## BUSINESS

**Accounting** 27

**Actuarial Science** 27

**Banking and Finance** 28

**Business** 28

12 majors, 10 minors

**Business Administration** 29

5 majors, 4 minors

**Commerce** 29

11 majors, 11 minors

**Economics** 30

**Finance** 30

**International Business** 31

**Marketing** 31

## EDUCATION

**Education (Honours)** 32

- Early childhood and primary education
- Primary education (studied as a single or double degree)
- Primary and secondary education
- Primary and secondary health and physical education
- Primary and secondary inclusive education
- Secondary health and physical education
- Secondary education (studied as a double degree)

## ENGINEERING

**Engineering (Honours)** 33

- Aerospace engineering
- Biomedical engineering
- Chemical engineering
- Civil engineering
- Electrical and computer systems engineering
- Environmental engineering
- Materials engineering
- Mechanical engineering
- Robotics and mechatronics engineering
- Software engineering

## INFORMATION TECHNOLOGY

**Computer Science** 34

- Advanced computer science
- Data science

**Computer Science Advanced (Honours)** 34

**Information Technology** 35

5 majors, 13 minors

Software engineering is studied as a specialisation of the Bachelor of Engineering (Honours) – see page 33.

## LAWS

**Laws (Honours)** 36

## MEDICINE, NURSING AND HEALTH SCIENCES

**Biomedical Science** 37

**Health Sciences** 37

**Medical Science and Doctor of Medicine** 38

**Nursing** 38

**Nursing and Midwifery (Honours)** 39

**Nutrition Science** 39

**Occupational Therapy (Honours)** 40

**Paramedicine** 40

**Physiotherapy (Honours)** 41

**Psychology (Honours)** 41

**Public Health** 42

**Radiation Sciences** 42

**Radiography and Medical Imaging (Honours)** 43

## PHARMACY AND PHARMACEUTICAL SCIENCES

**Pharmaceutical Science** 43

**Pharmaceutical Science Advanced (Honours)** 44

**Pharmacy (Honours)/ Master of Pharmacy** 44

## SCIENCE

**Applied Data Science** 45

**Applied Data Science Advanced (Honours)** 45

**Science** 46

25 majors, 21 minors

**Science Advanced – Global Challenges (Honours)** 47

**Science Advanced – Research (Honours)** 47





Image description: Exterior stain-glass window at Robert Blackwood Hall, Clayton campus.



## Bachelor of ARCHITECTURAL DESIGN

COURSE CODE: F2001

LOCATION: CAULFIELD  
DURATION: 3 YEARS  
INTAKE: FEBRUARY


This studio-based degree is your first step to becoming an architect. You'll combine creative vision and technical expertise to imagine new environments of the future and help shape society through exceptional design in the built environment.

You'll study in outstanding workshop facilities, with award-winning architects and industry professionals, and learn how to think beyond the building to create solutions that transform the way we live and improve our quality of life.

### Professional recognition

The Monash Master of Architecture is recognised by a range of international accreditation systems, so you can work across the world with your qualification.

### Entry requirements

COURSE		ATAR <sup>1</sup>	IB <sup>1</sup>	MG
Architectural Design	3	75.10	26	75
<b>Double degree<sup>2</sup> with</b>				
Engineering (civil engineering)	5	90.25	34	86

### Prerequisite studies

#### VCE

**English:** Units 3 and 4: a study score of at least 27 in English (EAL) or 25 in English other than EAL.

#### IB

**English:** Level 1. For prerequisite subject requirements, please refer to page 50.

### Career options

Architectural writer and commentator, community development officer, historic building conservationist, interior design consultant, property developer, sustainable design consultant, theatre and set designer, urban design and planning consultant, urban informatics designer.

#### GUARANTEED ENTRY FOR MONASH STUDENTS INTO MASTER OF ARCHITECTURE

Monash students who have successfully completed our Bachelor of Architectural Design are guaranteed entry into our two-year Master of Architecture, which is the required pathway to become a registered architect.

## Bachelor of DESIGN

COURSE CODE: F2010

LOCATION: CAULFIELD  
DURATION: 3 YEARS  
INTAKE: FEBRUARY AND JULY

Learn how to think like a designer to solve complex problems with curiosity, agility, experimentation and creativity.

Apply for the Bachelor of Design, then after your first semester you choose your specialisation (Communication, Industrial or Spatial design). Or you can explore your interests and undertake a mix of studios in Collaborative design.


### Professional recognition

All our design degrees are recognised by the Design Institute of Australia (DIA).

### Specialisations

- Communication design
- Industrial design
- Spatial design
- Collaborative design.

### Entry requirements

COURSE		ATAR <sup>1</sup>	IB <sup>1</sup>	MG
Design	3	70.15	24	70
<b>Double degree<sup>2</sup> with</b>				
Business	4	78.10	28	75
Information Technology	4	83.05	30	75
Media Communication	4	78.20	28	75
Engineering (Honours) (mechanical engineering)*	5	90.60	34	86

\* Only available with the industrial design specialisation.

### Prerequisite studies

#### VCE

**English:** Units 3 and 4: a study score of at least 27 in English (EAL) or 25 in English other than EAL.

#### IB

**English:** Level 1. For prerequisite subject requirements, please refer to page 50.

### Career options

**Communication design:** communication designer, advertising art director, branding expert, digital animator, experience designer, graphic designer, information designer, interaction designer, mobile app developer, motion graphics designer, product packaging designer, web/UX designer.

**Industrial design:** industrial designer, digital product designer, experience designer, product and packaging designer, design consultant, furniture designer, lighting designer, public transport designer, automotive designer, service designer.

**Spatial design:** interior designer, experience designer, museum and exhibition designer, stage/set production designer, visual merchandiser.

**Collaborative design:** service designer, design strategist, interdisciplinary designer, social innovator, design entrepreneur, design researcher as well as many careers that haven't yet been imagined.

<sup>1</sup> The scores provided are to be used as a guide only, and are either the lowest selection rank to which an offer was made in 2022 or an estimate (E).

<sup>2</sup> For double degree courses you must meet the prerequisites for both courses. See pages 56-59 for a full list of double degree prerequisites. Course codes and CRICOS codes for double degrees are available at [monash.edu/study](http://monash.edu/study).

# Bachelor of FINE ART

COURSE CODE: F2003

LOCATION: CAULFIELD

DURATION: 3 YEARS

INTAKE: FEBRUARY

Folio and written statement for the fine art specialisation only.


Our Fine Art degrees are unique, multi-disciplinary, studio-based courses that provide you with options to explore the world of contemporary fine art. Using state-of-the-art facilities, you can focus your studies through a hands-on practice-based approach or develop your knowledge as a specialist in art history and curating.

We'll foster your education and knowledge, and introduce you to key figures in the local and international art worlds to help you grow as a contemporary artist or creative practitioner.

## Specialisations

- Art history and curating – develop a specialised knowledge of the art world, art history and art writing.
- Fine art – develop your contemporary art practice and creativity, with the option to complement your studies through a double degree.

## Entry requirements

COURSE		ATAR <sup>1</sup>	IB <sup>1</sup>	MG
Art History and Curating	3	70	25	70
<b>Double degree<sup>2</sup> with Art History and Curating</b>				
Arts	4	81.35	29	70
Business	4	E: 75.80	E: 27	75
Media Communication	4	E: 77	E: 27	75
<b>Fine Art</b>				
Fine Art	3	RC	RC	RC
<b>Double degree<sup>2</sup> with Fine Art</b>				
Arts	4	RC	RC	RC
Business	4	RC	RC	RC
Education (Honours) in Primary Education	4.25	RC	RC	RC
Education (Honours) in Secondary Education	4.25	RC	RC	RC
Information Technology (games development and interactive media majors only)	4	RC	RC	RC
Media Communication	4	RC	RC	RC

## Prerequisite studies

### VCE

**English:** Units 3 and 4: a study score of at least 27 in English (EAL) or 25 in English other than EAL.

### IB

**English:** Level 1. For prerequisite subject requirements, please refer to page 50.

## Selection requirements

### FINE ART SPECIALISATION

For single and double degrees, you'll need to complete an online application form that includes:

- a digital portfolio of 10-15 images of original work, and
- a 300-word written statement.

For additional information on extra requirements and how to submit your folio, please visit: [monash.edu/study/course/f2003](https://monash.edu/study/course/f2003)

## Career options

**Fine Art:** artist collaborator, arts manager, contemporary artist, creative business entrepreneur, filmmaker, marketing or communications professional, museum or gallery professional, new media artist, studio manager, teacher.

**Art History and Curating:** art historian, arts journalist, arts programmer, collections manager, curator, gallery teacher, gallery owner, museum director, museum education officer, publisher, researcher, writer.

## GET READY TO CREATE

Monash Art, Design and Architecture is a creative community offering unique opportunities for collaboration and industry experience across disciplines.

We offer focused electives that provide you with opportunities for internships and placements within your field of practice, as well as the opportunity to collaborate with practitioners across disciplines, and even the chance to study at our international campus in Prato, Italy.

<sup>1</sup> The scores provided are to be used as a guide only, and are either the lowest selection rank to which an offer was made in 2022 or an estimate (E). RC – Range of criteria.

<sup>2</sup> For double degree courses you must meet the entry requirements and prerequisites for both courses. See pages 56-59 for a full list of double degree prerequisites. Course codes and CRICOS codes for double degrees are available at [monash.edu/study](https://monash.edu/study)



## ACCELERATED PATHWAY TO A MASTER'S DEGREE

Available for all Arts single degree students\*.

Did you know that with Monash Arts, you can graduate with a bachelor and master's degree in only four years? After completing two years of your bachelor's course, and providing you're a high-achieving student, you can take master's-level units as your electives in third-year.

You then complete the remainder of your master's course in your fourth-year.

We have the largest offering of bachelor's and master's double degrees in Australia, allowing you to match your bachelor's degree with a master's degree in one of the following:

- Applied Linguistics
- Bioethics
- Communications and Media Studies
- Cultural and Creative Industries
- International Development Practice
- International Relations
- International Sustainable Tourism Management
- Interpreting and Translation Studies
- Journalism
- Public Policy
- Strategic Communications Management.

### The benefits

- Fast track your studies and graduate with an undergraduate and graduate degree in just four years instead of five.
- Make yourself more employable with two degrees and specialist knowledge.
- Save time.
- Save on fees.

Visit Monash Arts at [monash.edu/arts](http://monash.edu/arts) for more information.

\*This excludes the Bachelor of Criminology and Policing

## The Global Immersion Guarantee

The Monash Arts Global Immersion Guarantee (GIG) is an award-winning initiative that will enable you to explore first-hand the relationships between society, technology and the environment. It's a two-week, funded field trip for all first-year Monash Arts single or double degree students to one of six destinations – China, India, Indonesia, Italy, Malaysia or the Pacific Islands. Your flights, accommodation and in-country travel costs are all covered!<sup>1</sup>

# Bachelor of ARTS


COURSE CODE: A2000

LOCATION: CAULFIELD, CLAYTON  
DURATION: 3 YEARS  
INTAKE: FEBRUARY AND JULY

Your three-year degree is built around deeply enriching experiences including Professional Futures, a career-oriented program which aims to build the skills and capabilities sought by employers. Customise your own professional journey with units across four key focus areas: innovation capability, intercultural expertise, global immersion and professional experience.

You'll also have the opportunity to choose from local and international internships, professional engagements and entrepreneurial opportunities, plus more than 50 global immersion programs, preparing you to live and work in complex and culturally diverse environments, while building a global network of peers.

## Entry requirements

COURSE		ATAR <sup>2</sup>	IB <sup>2</sup>	MG
Arts (Clayton)	3	80.05	29	70 <sup>3</sup>
Arts (Caulfield)	3	75.05	26	70 <sup>3</sup>
<b>Double degree<sup>4</sup> with</b>				
Business	4	79.35	28	75
Commerce	4	87.90	33	86
Criminology	4	80.10	29	70
Education (Honours)				
• Primary Education	4.25	80.10 RC	29 RC	77 RC
• Secondary Education		80.05 RC		
Engineering (Honours) <sup>5</sup>	5	91.85	35	86
Fine Art				
• Art History and Curating	4	81.35	29	70
• Fine Art		RC	RC	RC
Information Technology	4	82.55	30	78
International Business	4	78.05	28	75
Laws (Honours)	5.25	97	39	94
Marketing	4	82.95	30	75
Music	4	RC	RC	RC
Politics, Philosophy and Economics	4	E: 83 RC	E: 30 RC	75 RC
Science	4	85.20	31	75

## Prerequisite studies

### VCE

**English:** Units 3 and 4: a study score of at least 27 in English (EAL) or 25 in English other than EAL.

### IB

**English:** Level 1. For prerequisite subject requirements, please refer to page 50.

## Career options

Advertising, business management, communications, corporate and tourism sectors, diplomacy, directing, education, foreign affairs, gallery curating, human rights, Indigenous affairs, international development, international relations, journalism, linguistics, marketing, multicultural affairs, policy writing, politics, public relations, scriptwriting, social justice, sustainability, theatre, trade, translating and interpreting, and much more.

Majors and minors	Major	Minor	Clayton	Caulfield
Anthropology	●	●	●	
Archaeology and ancient history	●	●	●	
Behavioural studies		●	●	●
Bioethics		●	●	●
Chinese studies	●	●	●	
Communications and media studies	●	●	●	●
Criminology	●	●	●	●
Critical performance studies		●	●	
Economics	●	●	●	●
European languages (French, German, Italian and Spanish and Latin American Studies)	● <sup>6</sup>	●	●	
Film and screen studies	●	●	●	●
Gender studies	●	●	●	
Global Asia	●	●	●	
History	●	●	●	●
Holocaust and genocide studies		●	●	●
Human geography	●	●	●	
Human rights	●	●	●	●
Indigenous cultures and histories	●	●	●	
Indonesian studies	●	●	●	
International relations	●	●	●	●
International studies	●	●	●	●
Japanese studies	●	●	●	●
Jewish studies		●	●	●
Journalism	●	●		●
Korean studies	●	●	●	
Linguistics and English language	●	●	●	
Literary studies	●	●	●	●
Music	●	●	●	
Philosophy	●	●	●	●
Politics	●	●	●	●
Psychology	● <sup>6</sup>	●	●	
Sociology	●	●	●	●

- 1 Eligibility requirements apply: first-year students in a Monash Arts single or double degree, in good academic standing, who've undertaken 24 points of credit (including a minimum of 12 points in arts) and have passed all their arts units.
- 2 The scores provided are to be used as a guide only, and are either the lowest selection rank to which an offer was made in 2022 or an estimate (E). RC – Range of criteria.
- 3 This guarantee does not apply to the Law Pathway which requires an ATAR of 90+.
- 4 For double degree courses you must meet the prerequisites for both courses. See pages 56-59 for a full list of double degree prerequisites. Course codes and CRICOS codes for double degrees are available at [monash.edu/study](https://monash.edu/study)
- 5 This double degree isn't available with all specialisations; see [monash.edu/study](https://monash.edu/study) for full details.
- 6 Also available as an extended major.





## Bachelor of CRIMINOLOGY

COURSE CODE: A2008

LOCATION: CLAYTON  
DURATION: 3 YEARS  
INTAKE: FEBRUARY AND JULY


In the Bachelor of Criminology, you'll develop specialist knowledge in areas including hate crime, violent crime, cybercrime, transnational and organised crime. You'll study victimisation and perpetration, inequality and its impacts, and approaches to understanding crime and difference.

You'll consider the local, national and global aspects of crime and justice, and become familiar with a range of lenses for understanding and assessing the impact of society's changing responses to crime and justice.

Criminology at Monash is closely connected to three major research centres at Monash Arts: Gender and Family Violence Prevention, Migration and Inclusion, and Gender, Peace and Security.

This course is available as part of a bachelor and master's program, allowing high-achieving students to graduate with both degrees in just four years. You'll also have the opportunity to be part of the ground-breaking Global Immersion Guarantee<sup>1</sup> fieldwork trip. See page 22 for more information.

### Entry requirements

COURSE		ATAR <sup>2</sup>	IB <sup>2</sup>	MG
Criminology	3	77	29	70
<b>Double degree<sup>3</sup> with</b>				
Arts	4	80.10	29	70
Information Technology	4	77	27	75
Laws (Honours)	5.25	97	39	94

### Prerequisite studies

#### VCE

**English:** Units 3 and 4: a study score of at least 27 in English (EAL) or 25 in English other than EAL.

#### IB

**English:** Level 1. For prerequisite subject requirements, please refer to page 50.

### Career options

Anti-corruption bodies, Attorney-General's Department, community legal centres, Department of Justice, Federal Police, human rights organisations, international criminal justice organisations, Office of Corrections, private organisations, the courts system, youth crime centres.

## Bachelor of CRIMINOLOGY AND POLICING

COURSE CODE: A2014


LOCATION: CLAYTON  
DURATION: 3 YEARS  
INTAKE: FEBRUARY  
• SUPPLEMENTARY INFORMATION FORM

Crime is a complex phenomena, which requires it to be viewed from various perspectives. In a joint-venture with Victoria Police, the Bachelor of Criminology and Policing is the only course of its kind in Victoria. In this three-year program, you'll complete the core requirements of the Monash Bachelor of Criminology, and have the opportunity to apply to undertake a Diploma of Policing, undertaken at the Victoria Police Academy in your third year.

The breadth and depth of our Bachelor of Criminology is a necessary foundation if you're considering a career in policing or criminal justice. To be truly successful in policing, you must understand the crime event, the broader context in which crime occurs, the drivers of criminal behaviour, and the limits of formal and informal responses to crime. This course will provide you with the chance to apply to join Victoria Police and if successful, continue your studies at the Victorian Police Academy, or you can choose to work in other areas requiring crime and justice experts.

You'll also have the opportunity to be part of the ground-breaking Global Immersion Guarantee<sup>1</sup> fieldwork trip. See page 22 for more information.

### Entry requirements

COURSE		ATAR <sup>2</sup>	IB <sup>2</sup>	MG
Criminology and Policing	3	E: 77	E: 27	70

### Prerequisites

#### VCE

**English:** Units 3 and 4: a study score of at least 27 in English (EAL) or 25 in English other than EAL.

#### IB

**English:** Level 1. For prerequisite subject requirements, please refer to page 50.

### Extra requirements

You'll also need to submit a supplementary form as part of the application process and complete a police check.

### Career options

Anti-corruption, corrections, the courts, crime prevention, department of justice, government agencies, human rights, juvenile justice, legal support, police officer, social welfare, and more.

<sup>1</sup> Eligibility requirements apply: first-year students in a Monash Criminology single or double degree, in good academic standing, who've undertaken 24 points of credit (including a minimum of 12 points in arts) and have passed all their arts units.

<sup>2</sup> The scores provided are to be used as a guide only, and are either the lowest selection rank to which an offer was made in 2022 or an estimate (E). RC – Range of criteria.

<sup>3</sup> For double degree courses you must meet the prerequisites for both courses. See pages 56-59 for a full list of double degree prerequisites. Course codes and CRICOS codes for double degrees are available at [monash.edu/study](http://monash.edu/study)

## Bachelor of GLOBAL STUDIES

**COURSE CODE:** A2001

**LOCATION:** CLAYTON  
**DURATION:** 3 YEARS  
**INTAKE:** FEBRUARY

Designed for students who aspire to be leaders in creating social change, you'll learn how to critically analyse the global challenges facing cultures and communities throughout the world, and how to devise imaginative and well-informed solutions to help solve them.


This course has a number of exciting features that set it apart. Core units provide leadership development, and project-based learning includes the opportunity to work in collaboration with global organisations and non-government organisations (NGOs). There's also a compulsory international study component of the course which is designed to add to your study by challenging you to engage with your international experience, to step outside and reflect on the people and culture of your chosen destination.

### Specialisations

- Cultural competence
- Human rights
- International relations
- International studies.

This course is available as part of a bachelor and master's program, allowing high-achieving students to graduate with both degrees in just four years. You'll also have the opportunity to be part of the ground-breaking Global Immersion Guarantee<sup>1</sup> fieldwork trip, see page 22 for more information.

### Entry requirements

COURSE		ATAR <sup>2</sup>	IB <sup>2</sup>	MG
Global Studies	3	81.75	29	75
<b>Double degree<sup>3</sup> with</b>				
Commerce	4	87.55	32	86
Information Technology	4	E: 81.75	E: 29	75
Laws (Honours)	5.25	97.05	39	94
Science	4	85.05	31	80

### Prerequisite studies

#### VCE

**English:** Units 3 and 4: a study score of at least 27 in English (EAL) or 25 in English other than EAL.

#### IB

**English:** Level 1. For prerequisite subject requirements, please refer to page 50.

### Career options

Advocacy, diplomacy, defence, environmental sector, foreign affairs, government, human rights, immigration, international development, international relations, lobbying, mediation, non-government sector, politics and government, trade.

## Bachelor of MEDIA COMMUNICATION

**COURSE CODE:** A2002

**LOCATION:** CAULFIELD  
**DURATION:** 3 YEARS  
**INTAKE:** FEBRUARY AND JULY

The Bachelor of Media Communication addresses the growing demand for graduates with new and diverse skills in communication, and a critical understanding of the role of media in all aspects of our lives.

Gain cutting-edge industry skills and build an impressive portfolio of work in the multi-million dollar Monash Media Lab.


Work and collaborate with industry in internships with a recognised organisation either overseas or in Australia including News Corp, Fairfax, Southern Cross Austereo, the ABC, The Australian, the BBC, and many more.

### Specialisations

- Journalism
- Media
- Public relations
- Screen.

This course is available as part of a bachelor and master's program, allowing high-achieving students to graduate with both degrees in just four years. You'll also have the opportunity to be part of the ground-breaking Global Immersion Guarantee<sup>1</sup> fieldwork trip, see page 22 for more information.

### Entry requirements

COURSE		ATAR <sup>2</sup>	IB <sup>2</sup>	MG
Media Communication	3	77.25	27	70
<b>Double degree<sup>3</sup> with</b>				
Business	4	79.55	28	75
Design	4	78.20	28	75
Fine Art		E: 77	E: 27	75
• Art History and Curating	4			
• Fine Art		RC	RC	RC
Marketing	4	77.65	28	75

### Prerequisite studies

#### VCE

**English:** Units 3 and 4: a study score of at least 27 in English (EAL) or 25 in English other than EAL.

#### IB

**English:** Level 1. For prerequisite subject requirements, please refer to page 50.

### Career options

Advertising creative, broadcast presenter, communications manager, content producer, content writer, digital communications strategist, film director, journalist, location manager, media analyst, media content coordinator, movie critic, publisher, public relations professional, radio broadcaster, researcher, social media manager, television presenter, video producer, and much more.

<sup>1</sup> Eligibility requirements apply: first-year Bachelor of Global Studies or Bachelor of Media Communication students (and relevant double degrees) in good academic standing, who've undertaken 24 points of credit (including a minimum of 12 points arts) and have passed all their arts units.

<sup>2</sup> The scores provided are to be used as a guide only, and are either the lowest selection rank to which an offer was made in 2022 or an estimate (E). RC – Range of criteria.

<sup>3</sup> For double degree courses you must meet the prerequisites for both courses. See pages 56-59 for a full list of double degree prerequisites. Course codes and CRICOS codes for double degrees are available at [monash.edu/study](http://monash.edu/study)



## Bachelor of MUSIC

**COURSE CODE:** A2003

**LOCATION:** CLAYTON  
**DURATION:** 3 YEARS  
**INTAKE:** FEBRUARY AND JULY

• AUDITION

Monash's Sir Zelman Cowen School of Music and Performance has one of the most comprehensive music programs in the country allowing you to work or teach in the music and creative industries. Learn practical skills and advanced musicianship while being exposed to the creative, cultural, historical and technical aspects of music making and musical thinking.

You'll collaborate with international artists, learn from accomplished teaching staff, perform to audiences across the country with an ensemble or orchestra and can even study and perform overseas.


Monash's world-class Digital Hub enables audiovisual streaming, globalising students' learning experience in real-time for collaborative performance experiences with renowned performers, and the creation of digital portfolios for all music students.

### Specialisations

- Composition and music technology
- Music performance (classical or jazz and improvisation)
- Popular music.

This course is available as part of a bachelor and master's program, allowing high-achieving students to graduate with both degrees in just four years. You'll also have the opportunity to be part of the ground-breaking Global Immersion Guarantee<sup>1</sup> fieldwork trip, see page 22 for more information.

### Entry requirements

COURSE		ATAR <sup>2</sup>	IB <sup>2</sup>	MG
Music	3	RC	RC	RC
<b>Double degree<sup>3</sup> with</b>				
Arts	4	RC	RC	RC
Commerce	4	RC	RC	RC
Education (Honours)				
• Primary Education	4.25	RC	RC	RC
• Secondary Education		RC	RC	RC
Laws (Honours)	5.25	RC	RC	RC
Science	4	RC	RC	RC

### Prerequisite studies

#### VCE

**English:** Units 3 and 4: a study score of at least 27 in English (EAL) or 25 in English other than EAL.

#### IB

**English:** Level 1. For prerequisite subject requirements, please refer to page 50.

### Selection requirements

You must complete an audition/composition. For more information, visit [arts.monash.edu/music/audition-information](https://arts.monash.edu/music/audition-information)

### Career options

Accompanist, artist manager, audio engineer, audio-visual production, composer, conductor, critic, DJ, editor, festival producer, film scoring, marketing and communications, music journalist, music therapist, music writer, musicologist, performer, teaching and much more.

## Bachelor of POLITICS, PHILOSOPHY AND ECONOMICS

**COURSE CODE:** A2010

**LOCATION:** CLAYTON  
**DURATION:** 3 YEARS  
**INTAKE:** FEBRUARY  
 • SUPPLEMENTARY INFORMATION FORM

Developed by Monash's world renowned politics, philosophy and economics professors, this course is designed for deep thinkers who want to have a real impact on shaping our society.


Think critically about analysis, strategy and leadership. You'll engage with researchers and global leaders to hone the industry-relevant abilities needed to thrive in a world defined by constant technological, environmental, political and population change.

### Specialisations

- Politics and governance
- Philosophy
- Economic analysis.

This course is available as part of a bachelor and master's program, allowing high-achieving students to graduate with both degrees in just four years. You'll also have the opportunity to be part of the ground-breaking Global Immersion Guarantee<sup>1</sup> fieldwork trip, see page 22 for more information.

### Entry requirements

COURSE		ATAR <sup>2</sup>	IB <sup>2</sup>	MG
Politics, Philosophy and Economics	3	E: 83 RC	E: 30 RC	75 RC
<b>Double degree<sup>3</sup> with</b>				
Arts	4	E: 83 RC	E: 30 RC	75 RC
Commerce	4	RC	RC	RC
Laws (Honours)	4	97 RC	39 RC	94 RC

### Prerequisite studies

#### VCE

**English:** Units 3 and 4: a study score of at least 27 in English (EAL) or 25 in English other than EAL. **Maths:** Units 3 and 4: a study score of at least 22 in one of Mathematical Methods or Specialist Mathematics; or at least 25 in Further Mathematics.

#### IB

**English:** Level 1. Maths: Level 2. For prerequisite subject requirements, please refer to page 50.

### Selection requirements

You'll also need to complete a supplementary form providing information about your interests.

### Career options

Advocacy, banking and finance, business management, civil society leadership, consulting, diplomacy, economics, government, international relations, lobbying, policy analysis, politics, public affairs and more.

1 Eligibility requirements apply: first-year students in a Monash Music or Politics, Philosophy and Economics single or double degree, in good academic standing, who've undertaken 24 points of credit (including a minimum of 12 points in arts) and have passed all their arts units.  
 2 The scores provided are to be used as a guide only, and are either the lowest selection rank to which an offer was made in 2022 or an estimate (E). RC – Range of criteria.  
 3 For double degree courses you must meet the prerequisites for both courses. See pages 56-59 for a full list of double degree prerequisites. Course codes and CRICOS codes for double degrees are available at [monash.edu/study](https://monash.edu/study)

# Bachelor of ACCOUNTING

COURSE CODE: B2029

## RANKED NO. 32 IN THE WORLD IN ACCOUNTING AND FINANCE

QS World University Rankings by Subject 2021

LOCATION: CAULFIELD

DURATION: 3 YEARS

INTAKE: FEBRUARY\*

\*Applications for mid-year enrollment in July are also available, but are strictly dependent on availability.


Accounting is a means of communicating business information. Accountants have an integral role in business, interacting across organisational functions including operations, marketing, human resources and also advising senior management. In this course you'll gain solid technical skills across key areas such as information systems, corporate finance, auditing and assurance, financial reporting and data analysis.

As the largest business school in Australia, we can equip you with the broader business and advisory skills needed to build a successful accounting career.

Depending on your electives, this course could prepare you to meet the accounting accreditation requirements of:

- CPA Australia
- Chartered Accountants Australia and New Zealand
- The Institute of Public Accountants
- The Chartered Institute of Management Accountants
- The Association of Chartered Certified Accountants.

## Entry requirements

COURSE		ATAR <sup>1</sup>	IB <sup>1</sup>	MG
Accounting	3	77.20	27	75
<b>Double degree<sup>2</sup> with</b>				
Business	4	79.10	28	75

## Prerequisite studies

### VCE

**English:** Units 3 and 4: a study score of at least 27 in English (EAL) or 25 in English other than EAL. **Maths:** Units 3 and 4: a study score of at least 22 in one of Mathematical Methods (any) or Specialist Mathematics or a score of at least 25 in Further Mathematics.

### IB

**English:** Level 1. **Maths:** Level 2. For prerequisite subject requirements, please refer to page 50.

## Career options

Auditing, budgeting, business advisory, forensic accounting, liquidation, management accounting, mergers and acquisitions, taxation.

# Bachelor of ACTUARIAL SCIENCE

COURSE CODE: B2033

## RANKED NO. 35 IN THE WORLD IN ECONOMICS AND ECONOMETRICS

QS World University Rankings by Subject 2021

LOCATION: CLAYTON

DURATION: 3 YEARS

INTAKE: FEBRUARY\*

\*Applications for mid-year enrollment in July are also available, but are strictly dependent on availability.

If you're big on numbers and the role they play in our day-to-day lives, actuarial science can help turn your curiosity into a promising commercial career. Learn to evaluate risk and opportunity in a business setting, and use your findings to influence some of society's most important economic structures.


In this course you'll learn to apply mathematical concepts to real-life scenarios, and use your analytical skills to help companies plan for the future.

Monash Business School's Department of Econometrics and Business Statistics is the only dedicated department of its kind in Australia and has the largest concentration of econometricians and statisticians in the region.

## Professional recognition and accreditation

This degree is also accredited by the Actuaries Institute, and may allow you to achieve Part I of the Actuaries Institute professional qualification.

## Entry requirements

COURSE		ATAR <sup>1</sup>	IB <sup>1</sup>	MG
Actuarial Science	3	87.65	32	86
<b>Double degree<sup>2</sup> with</b>				
Commerce	4	88.05	33	86

## Prerequisite studies

### VCE

**English:** Units 3 and 4: a study score of at least 27 in English (EAL) or 25 in English other than EAL. **Maths:** Units 3 and 4: a study score of at least 25 in one of Mathematical Methods (any) or Specialist Mathematics.

### IB

**English:** Level 1. **Maths:** Level 3. For prerequisite subject requirements, please refer to page 50.

## Career options

Asset management, auditing, banking, data analysis, financial planning, insurance, risk management, stockbroking.

<sup>1</sup> The scores provided are to be used as a guide only, and are either the lowest selection rank to which an offer was made in 2022 or an estimate (E).

<sup>2</sup> For double degree courses you must meet the prerequisites for both courses. See pages 56-59 for a full list of double degree prerequisites. Course codes and CRICOS codes for double degrees are available at [monash.edu/study](http://monash.edu/study)



## Bachelor of BANKING AND FINANCE

COURSE CODE: B2042

### RANKED NO.32 IN THE WORLD IN ACCOUNTING AND FINANCE

QS World University Rankings by Subject 2021

LOCATION: CAULFIELD

DURATION: 3 YEARS

INTAKE: FEBRUARY\*

\*Applications for mid-year enrollment in July are also available, but are strictly dependent on availability.

From capital markets to financial forecasting – futures, derivatives, bonds, stocks and more – you'll explore what makes banking and finance such a central part of the world today.

In this course you'll focus on the key theories, practices and concepts that underpin the banking and finance sector.

As the largest business school in Australia, we offer innovative teaching facilities and access to our Simulated Teaching and Research Laboratory (STARLab) where you can use market simulation programs to enhance your decision-making ability.

### Entry requirements

COURSE	⌚	ATAR <sup>1</sup>	IB <sup>1</sup>	MG
Banking and Finance	3	79.10	28	75
<b>Double degree<sup>2</sup> with</b>				
Business	4	80.45	29	75

### Prerequisite studies

#### VCE

**English:** Units 3 and 4: a study score of at least 27 in English (EAL) or 25 in English other than EAL. **Maths:** Units 3 and 4: a study score of at least 22 in one of Mathematical Methods (any) or Specialist Mathematics or 25 in Further Mathematics.

#### IB

**English:** Level 1. **Maths:** Level 2. For prerequisite subject requirements, please refer to page 50.

### Career options

Accounting, banking, broking, consulting, funds management, insurance, superannuation.

## Bachelor of BUSINESS

COURSE CODE: B2000

### RANKED NO.45 IN THE WORLD IN BUSINESS AND MANAGEMENT

QS World University Rankings by Subject 2021

LOCATION: CAULFIELD

DURATION: 3 YEARS

INTAKE: FEBRUARY\*

#### • INDIGENOUS ENTRY PATHWAY

\*Applications for mid-year enrollment in July are also available, but are strictly dependent on availability.

If you're intrigued by what makes markets, brands and organisations function effectively, a business degree could be a perfect fit. In this course you'll have lots of options with the choice of 12 majors, so it's great if you're looking for broad-based business skills or you haven't decided how you want to specialise. Plus with 10 double-degree options, you could combine two fields of interest.

### Entry requirements

COURSE	⌚	ATAR <sup>1</sup>	IB <sup>1</sup>	MG
Business	3	76	27	75
<b>Double degree<sup>2</sup> with</b>				
Accounting	4	79.10	28	
Arts	4	79.35	28	75
Banking and Finance	4	80.45	29	
Design	4	78.10	28	75
Education (Honours)				
• Primary Education	4.25	80 RC	29 RC	77 RC
• Secondary Education		82.15 RC	30 RC	
Fine Art:				
• Art History and Curating	4	E: 75.80	E: 27	75
• Fine Art		RC	RC	RC
Information Technology	4	78.05	28	
International Business	3	78.15	28	75
Marketing	4	80.45	29	
Media Communication	4	79.55	28	

### Prerequisite studies

#### VCE

**English:** Units 3 and 4: a study score of at least 27 in English (EAL) or 25 in English other than EAL. **Maths:** Units 3 and 4: a study score of at least 22 in one of Mathematical Methods (any) or Specialist Mathematics, or at least 25 in Further Mathematics.

#### IB

**English:** Level 1. **Maths:** Level 2. For prerequisite subject requirements, please refer to page 50.

Majors and minors	Major	Minor
Accounting	●	●
Banking and finance	●	●
Business analytics and statistics	●	●
Business law	●	●
Business management	●	●
Business studies	●	
Economics and business strategy	●	●
Financial econometrics	●	
Human resource management	●	●
International business	●	●
Marketing	●	●
Taxation	●	●

1 The scores provided are to be used as a guide only, and are either the lowest selection rank to which an offer was made in 2022 or an estimate (E). RC – Range of criteria.

2 For double degree courses you must meet the prerequisites for both courses. See pages 56-59 for a full list of double degree prerequisites. Course codes and CRICOS codes for double degrees are available at [monash.edu/study](http://monash.edu/study)

# Bachelor of BUSINESS ADMINISTRATION

COURSE CODE: B2007

## RANKED NO.45 IN THE WORLD IN BUSINESS AND MANAGEMENT

QS World University Rankings by Subject 2021

LOCATION: PENINSULA

DURATION: 3 YEARS

INTAKE: FEBRUARY\*


### • INDIGENOUS ENTRY PATHWAY

\* Applications for mid-year enrollment in July are also available, but are strictly dependent on availability.

From bringing ideas to life to managing a team, doing a Bachelor of Business Administration is your chance to get a real-world understanding of the many factors that come together to make a business work.

This comprehensive degree will teach you the ins and outs of business – including management, accountancy, finance, economics, marketing and communications. It features smaller, interactive classes with a commercially-focused, supportive learning environment.

## Entry requirements

COURSE		ATAR <sup>1</sup>	IB <sup>1</sup>	MG
Business Administration	3	70.60	25	70

## Prerequisite studies

### VCE

**English:** Units 3 and 4: a study score of at least 27 in English (EAL) or 25 in English other than EAL. **Maths:** Units 1 and 2: a satisfactory completion in two units (any study combination) of General Mathematics, Mathematical Methods or Specialist Mathematics.

### IB

**English:** Level 1. **Maths:** Level 1. For prerequisite subject requirements, please refer to page 50.

Majors and minors	Major	Minor
Accountancy	●	●
Business administration studies	●	
Economics and business decisions		●
Finance and economics	●	
Management practice	●	●
Marketing and communications	●	●

## Career options

Accounting, consulting, government, management, marketing.

1 The scores provided are to be used as a guide only, and are either the lowest selection rank to which an offer was made in 2022 or an estimate (E). RC – Range of criteria.

2 For double degree courses you must meet the prerequisites for both courses. See pages 56-59 for a full list of double degree prerequisites. Course codes and CRICOS codes for double degrees are available at [monash.edu/study](http://monash.edu/study)

3 This double degree isn't available with all specialisations; see [monash.edu/study](http://monash.edu/study) for full details.

4 This guarantee does not apply to the law pathway, which requires an ATAR of 90+.

# Bachelor of COMMERCE

COURSE CODE: B2001

## RANKED NO.45 IN THE WORLD IN BUSINESS AND MANAGEMENT

QS World University Rankings by Subject 2021

LOCATION: CLAYTON

DURATION: 3 YEARS

INTAKE: FEBRUARY\*

### • LAW PATHWAY


\* Applications for mid-year enrollment in July are also available, but are strictly dependent on availability.

Commerce impacts decision-making, leadership, innovation and policy development on a global scale.

If you're a clever thinker who likes to unpack problems and consider ideas from a fresh perspective, commerce presents a world of exciting career prospects.

With 11 majors to choose from and 13 double-degree options on offer, you'll have genuine depth and diversity of choice.

## Entry requirements

COURSE		ATAR <sup>1</sup>	IB <sup>1</sup>	MG
Commerce	3	86.50	32	86 <sup>4</sup>
<b>Double degree<sup>2</sup> with</b>				
Actuarial Science	4	88.05	33	86
Arts	4	87.90	33	86
Biomedical Science	4	92.10	35	88
Computer Science	4	92.10	35	88
Economics	4	87.40	32	86
Engineering (Honours) <sup>3</sup>	5	90.75	34	88
Finance	4	88.50	33	86
Global Studies	4	87.55	32	86
Information Technology	4	87.80	33	86
Laws (Honours)	5.25	97	39	94
Music	4	RC	RC	RC
Politics, Philosophy and Economics	4	RC	RC	RC
Science	4	87.90	33	86

## Prerequisite studies

### VCE

**English:** Units 3 and 4: a study score of at least 27 in English (EAL) or 25 in English other than EAL. **Maths:** Units 3 and 4: a study score of at least 25 in Mathematical Methods (any) or Specialist Mathematics.

### IB

**English:** Level 1. **Maths:** Level 3. For prerequisite subject requirements, please refer to page 50.

Majors and minors	Major	Minor
Accounting	●	●
Actuarial studies	●	●
Behavioural commerce	●	●
Business analytics	●	●
Business law		●
Econometrics	●	●
Economics	●	●
Finance	●	●
Management studies	●	●
Marketing science	●	●
Mathematical foundations of econometrics	●	
Sustainability	●	●



# Bachelor of ECONOMICS

COURSE CODE: B2031

## RANKED NO.35 IN THE WORLD IN ECONOMICS AND ECONOMETRICS

QS World University Rankings by Subject 2021

LOCATION: CLAYTON

DURATION: 3 YEARS

INTAKE: FEBRUARY\*

\* Applications for mid-year enrollment in July are also available, but are strictly dependent on availability.


Explore the principles our economy is built on, and learn how they impact the way we spend, save, work and live. A Bachelor of Economics will teach you to think analytically, solve problems logically and make informed decisions in a commercial context.

In this course you'll further focus your studies by following one of these specialisations.

### Specialisations

- Economics and economic policy
- Mathematical economics and econometrics.

### Entry requirements

COURSE		ATAR <sup>1</sup>	IB <sup>1</sup>	MG
Economics	3	85.90	31	TBC <sup>2</sup>
<b>Double degree<sup>3</sup> with</b>				
Commerce	4	87.40	32	86

### Prerequisite studies

#### VCE

**English:** Units 3 and 4: a study score of at least 27 in English (EAL) or 25 in English other than EAL. **Maths:** Units 3 and 4: a study score of at least 25 in Mathematical Methods (any) or Specialist Mathematics.

#### IB

**English:** Level 1. **Maths:** Level 3. For prerequisite subject requirements, please refer to page 50.

### Career options

Banking, financial services, research, academia and government departments such as the Reserve Bank of Australia, the Australian Bureau of Statistics and the Australian Treasury.

# Bachelor of FINANCE

COURSE CODE: B2034

## RANKED NO.32 IN THE WORLD IN ACCOUNTING AND FINANCE

QS World University Rankings by Subject 2021

LOCATION: CLAYTON

DURATION: 3 YEARS


INTAKE: FEBRUARY\*

\* Applications for mid-year enrollment in July are also available, but are strictly dependent on availability.

Few things impact our society more than the exchange of money. The way we earn, spend, save, borrow and invest money – both as individuals and as a collective – is reflected in everything from interest rates to property prices. You'll develop the skills you need to manage money well, whether for big corporations, small businesses or governments.

As the largest business school in Australia, we offer innovative teaching facilities. As part of this course, you can access our Simulated Teaching and Research Laboratory (STARLab), and use market simulation programs to enhance your decision-making ability.

### Entry requirements

COURSE		ATAR <sup>1</sup>	IB <sup>1</sup>	MG
Finance	3	86.15	32	86
<b>Double degree<sup>2</sup> with</b>				
Commerce	4	88.50	33	86

### Prerequisite studies

#### VCE

**English:** Units 3 and 4: a study score of at least 27 in English (EAL) or 25 in English other than EAL. **Maths:** Units 3 and 4: a study score of at least 25 in Mathematical Methods (any) or Specialist Mathematics.

#### IB

**English:** Level 1. **Maths:** Level 3. For prerequisite subject requirements, please refer to page 50.

### Career options

Accounting, banking, broking, consulting, financial forecasting, funds management, insurance.

<sup>1</sup> The scores provided are to be used as a guide only, and are either the lowest selection rank to which an offer was made in 2022 or an estimate (E).

<sup>2</sup> This score is still to be confirmed. Please visit [monash.edu/study](https://monash.edu/study) for more information.

<sup>3</sup> For double degree courses you must meet the prerequisites for both courses. See pages 56-59 for a full list of double degree prerequisites. Course codes and CRICOS codes for double degrees are available at [monash.edu/study](https://monash.edu/study)

# Bachelor of INTERNATIONAL BUSINESS

COURSE CODE: B2005

## RANKED NO.45 IN THE WORLD IN BUSINESS AND MANAGEMENT

QS World University Rankings by Subject 2021

LOCATION: CAULFIELD

DURATION: 3 YEARS\*

INTAKE: FEBRUARY\*

\*This course may be taken in an accelerated mode, where you'll be required to undertake more than the standard annual load of 48 credit points in order to complete the course in two calendar years.


\*Applications for mid-year enrollment in July are also available, but are strictly dependent on availability.

The Bachelor of International Business is tailor-made to not only give you a global mindset, but the skills to turn your international insights into a successful career. Your course will be tailored to building the skills you need to understand the issues affecting businesses that operate in an international landscape.

This course is unique in that it offers the opportunity to accelerate your studies by taking units over summer. With summer semesters you can manage your enrolment from year one in order to complete your degree up to a year earlier.

As part of the course, you'll also have the opportunity to study abroad<sup>1</sup> or complete an industry placement.

## Entry requirements

COURSE		ATAR <sup>2</sup>	IB <sup>2</sup>	MG
International Business	3	76.45	27	75
<b>Double degree<sup>3</sup> with</b>				
Arts	4	78.05	28	75
Business	4	78.15	28	

## Prerequisite studies

### VCE

**English:** Units 3 and 4: a study score of at least 27 in English (EAL) or 25 in English other than EAL. **Maths:** Units 3 and 4: a study score of at least 22 in one of Mathematical Methods (any) or Specialist Mathematics or 25 in Further Mathematics.

### IB

**English:** Level 1. **Maths:** Level 2. For prerequisite subject requirements, please refer to page 50.

## Career options

Accounting, consultancy, human resources, marketing.

# Bachelor of MARKETING

COURSE CODE: B2036

## RANKED NO.45 IN THE WORLD IN BUSINESS AND MANAGEMENT

QS World University Rankings by Subject 2021

LOCATION: CAULFIELD

DURATION: 3 YEARS


INTAKE: FEBRUARY\*

\*Applications for mid-year enrollment in July are also available, but are strictly dependent on availability.

Develop the creative and technical insights you need to help businesses build their brand. This course will give you a combination of technical, practical and analytical skills, from understanding buyer behaviour to building social campaigns – everything you need to think and act as a professional marketer.

Marketing employers around the world recognise the quality of a marketing qualification from Monash and the solid grounding in business that it offers. This makes our graduates sought-after nationally and internationally.

## Entry requirements

COURSE		ATAR <sup>2</sup>	IB <sup>2</sup>	MG
Marketing	3	77.70	28	75
<b>Double degree<sup>3</sup> with</b>				
Arts	4	82.95	30	75
Business	4	80.45	29	
Media Communication	4	77.65	28	

## Prerequisite studies

### VCE

**English:** Units 3 and 4: a study score of at least 27 in English (EAL) or 25 in English other than EAL. **Maths:** Units 3 and 4: a study score of at least 22 in one of Mathematical Methods (any) or Specialist Mathematics, or 25 in Further Mathematics.

### IB

**English:** Level 1. **Maths:** Level 2. For prerequisite subject requirements, please refer to page 50.

## Career options

Brand management, campaign analysis, digital marketing, market research, media planning, social media.

## Get more from your Monash experience

Monash Business School offers:

- Access to professional placements, corporate projects and industry internships with some of the most influential companies in the world.
- You can enrol in programs for leadership, professional development and volunteering. And you can join professional societies for networking.
- You can even head overseas to participate in our industry-based study programs in Europe, Asia, USA or South America<sup>1</sup>.

<sup>1</sup> This is dependent on international travel restrictions.

<sup>2</sup> The scores provided are to be used as a guide only, and are either the lowest selection rank to which an offer was made in 2022 or an estimate (E).

<sup>3</sup> For double degree courses you must meet the prerequisites for both courses. See pages 56-59 for a full list of double degree prerequisites. Course codes and CRICOS codes for double degrees are available at [monash.edu/study](http://monash.edu/study)



# Bachelor of EDUCATION (Honours)

COURSE CODE: D3001

LOCATION: CLAYTON, PENINSULA

DURATION: 4 YEARS\*

INTAKE: FEBRUARY

- PROFESSIONALLY ACCREDITED
- INDIGENOUS ENTRY PATHWAY
- ADMISSIONS TEST

## DEGREE AWARDED

The degree you're awarded will reflect your chosen specialisation.

\* This is a 4.25-year course taken as an accelerated course where you'll do the equivalent of 4.25 years of study in four calendar years.

Are you ready to change the world through education? Do you want to be the teacher your students remember? Choose to specialise in early childhood, primary or secondary education – or a combination of these – and graduate ready for a successful career.

## Specialisations

Choose from one of the following specialisations:

- Early childhood and primary education
- Primary education – studied as a single or double degree
- Primary and secondary education
- Primary and secondary health and physical education
- Primary and secondary inclusive education<sup>1</sup>
- Secondary health and physical education
- Secondary education – studied as a double degree only.

Whichever specialisation you choose, you'll graduate with an honours degree. This will give you a higher-level qualification and a deeper understanding of your own professional practice. The degree you're awarded will reflect your chosen specialisation.

## Double degrees

A double degree is a great option if you're interested in teaching but also want to gain expertise in another discipline. At Monash, you can choose from the following double degrees with either the Primary or Secondary Education specialisation: arts, business, fine art, music and science.

## Pathways into Education

If you've narrowly missed the entry requirement for direct entry into an education degree, you can consider a pathway program such as the Diploma of Tertiary Studies or Diploma of Higher Education. On successful completion you can gain up to one year of credit towards a range of Monash education degrees.

## Professional experience – local or global

Put your learning into practice by completing at least 80 days of professional experience during your course. You can stay local, head rural or overseas. You can be in a classroom or an integral part of a community program. Build your confidence and gain real-world experience so you're ready to teach when you graduate.

## Career options

School or early childhood teacher, community education, corporate training, curriculum development, health and fitness coaching, student welfare, school leadership, teaching.

## Entry requirements

COURSE			ATAR <sup>2</sup>	IB <sup>2</sup>	MG
Education (Honours)					
• Early Childhood and Primary Education	PE	4.25	71.15 RC	25 RC	
• Primary Education	PE*	4.25	71.70 RC	25 RC	
• Primary and Secondary Education	CL	4.25	71.15 RC	25 RC	
• Primary and Secondary Health and Physical Education	PE	4.25	73.95 RC	26 RC	70 RC
• Primary and Secondary Inclusive Education <sup>1</sup>	CL	4.25	E: 77 RC	E: 27RC	
• Secondary Health and Physical Education	PE	4.25	71.05 RC	25 RC	
• Secondary Education	CL		Refer to double degrees		

CL – Clayton, PE – Peninsula \* When taken as part of a double degree, the location will be at Clayton

### Double degree<sup>2</sup> with

Arts					
• Primary Education		4.25	80.10 RC	29 RC	
• Secondary Education			80.05 RC		77 RC
Business					
• Primary Education		4.25	80 RC	29 RC	
• Secondary Education			82.15 RC	30 RC	
Fine Art <sup>3</sup>					
• Primary Education		4.25	RC	RC	RC
• Secondary Education			RC	RC	RC
Music					
• Primary Education		4.25	RC	RC	RC
• Secondary Education			RC	RC	RC
Science					
• Primary Education		4.25	85 RC	31 RC	77 RC
• Secondary Education			86.10 RC	32 RC	

## Prerequisite studies

### VCE

**English:** Units 3 and 4: a study score of at least 30 in English (EAL) or 25 in English other than EAL. **Maths:** Units 1 and 2: satisfactory completion of two units (any study combination) of General Mathematics, Mathematical Methods or Specialist Mathematics; or Units 3 and 4: any mathematics.

### IB

**English:** Level 1. **Maths:** Level 1. For prerequisite subject requirements, please refer to page 50.

## Non-academic selection requirement – Casper

All applicants are required to complete a mandatory online 90-minute computer-based test called Casper, as part of the application process. For more information, visit [monash.edu/education/takecasper](https://monash.edu/education/takecasper)

## Post-enrolment requirements

During your degree you'll be required to meet some extra requirements:

- Working with Children check
- Literacy and Numeracy test.

1 The Bachelor of Education (Honours) in Primary and Secondary Inclusive Education is still to be confirmed, visit [monash.edu/study](https://monash.edu/study) for updated information.

2 The scores provided are to be used as a guide only, and are either the lowest selection rank to which an offer was made in 2022 or an estimate (E). RC – Range of criteria.

3 For double degree courses you must meet the prerequisites for both courses. See pages 56-59 for a full list of double degree prerequisites. Course codes and CRICOS codes for double degrees are available at [monash.edu/study](https://monash.edu/study)

4 This double degree is only available with the Fine Art specialisation.

# Bachelor of ENGINEERING (Honours)

COURSE CODE: E3001

## TOP 55 GLOBALLY IN ENGINEERING

Times Higher Education subject rankings, 2022

LOCATION: CLAYTON

DURATION: 4 YEARS

INTAKE: FEBRUARY, JULY<sup>1</sup> AND NOVEMBER

• PROFESSIONALLY ACCREDITED

### DEGREE AWARDED

The degree you're awarded will reflect your chosen specialisation.

Engineers are collaborative and creative problem-solvers who design technology and develop innovative solutions across a vast range of areas including: advancing technologies for clean water, green energy, high-speed communications and transportation, advanced healthcare devices, reliable autonomous systems and safe, smart sustainable products, homes and cities, and more.

At Monash – one of Australia's leading engineering schools – you'll apply maths and science in a practical way, and work in teams to develop new technologies and improve existing ones.

We've created a professionally accredited engineering program that gives you maximum choice and flexibility. You'll study a common first year, where you'll get a taste for each of the 10 specialisations Monash offers before deciding which one to pursue from your second year.

You'll also have the opportunity to choose from a range of minors<sup>2</sup> from different and emerging engineering fields, such as artificial intelligence and smart manufacturing, to complement your specialisation and expand your career opportunities.

You'll learn in the latest dynamic and interactive spaces in the new smart technology-enabled Woodside Building for Technology and Design and have access to various creative and collaborative Makerspaces.

## Specialisations


- Aerospace engineering
- Biomedical engineering<sup>3,4</sup>
- Chemical engineering
- Civil engineering
- Electrical and computer systems engineering
- Environmental engineering
- Materials engineering
- Mechanical engineering
- Robotics and mechatronics engineering
- Software engineering.

The degree you're awarded will reflect your chosen specialisation.

### Accelerated pathway to master's

If you're a high-achieving student, you can accelerate your studies. In just five years, be on track to earn both a Bachelor of Engineering (Honours) and a master's degree in engineering. Choose from a rich selection of specialist electives and access master's-level units while completing the elective components of your Bachelor of Engineering (Honours).

## Entry requirements

COURSE		ATAR <sup>5</sup>	IB <sup>5</sup>	MG
Engineering (Honours) <sup>4</sup>	4	86	32	85
<b>Double degree<sup>6</sup> with</b>				
Architectural Design	5	90.25	34	86
Arts	5	91.85	35	86
Biomedical Science	5	92.20	35	88
Commerce	5	90.75	34	88
Computer Science	5	90.15	34	88
Design	5	90.60	34	86
Information Technology	5	88.85	33	86
Laws (Honours)	6.25	97.30	40	94
Pharmaceutical Science	5	90.10	34	86
Science	5	89	33	86
Engineering (Honours)/Master's accelerated pathway <sup>7</sup>	5	94.20	37	N/A

## Prerequisite studies

### VCE

**English:** Units 3 and 4: a study score of at least 27 in English (EAL) or 25 in English other than EAL. **Maths:** Units 3 and 4: a study score of at least 25 in Mathematical Methods (any) or Specialist Mathematics.

**Science:** Units 3 and 4: a study score of at least 25 in Chemistry or Physics.

### IB

**English:** Level 1. **Maths:** Level 3. **Science:** Chemistry or Physics only. For prerequisite subject requirements, please refer to page 50.

## Career options

Advanced manufacturing, aerospace, artificial intelligence, automation, defence, design and construction, energy and power generation, environment and sustainability, financial services, food and agriculture, infrastructure, management consulting, medical equipment and device design, mining, renewable energy, research and development, robotics and autonomous systems, software systems and IT services, start-up technology development, sustainable resources, traffic and transport, tunnelling, water management and recycling.

### Biomedical Engineering<sup>3,4</sup>

You can now design the future of healthcare by choosing Biomedical Engineering as one of your specialisation options.

### Graduate job-ready

Complete a three, six or 12-month paid Co-operative Education Program internship to kick-start your engineering career.

Learn practical engineering skills, gain real-life insights into the workforce, build industry connections and graduate job-ready.

<sup>1</sup> Please note that July intake admission into the Robotics and mechatronics specialisation will require that you undertake a bespoke course progression due to sequencing. The course adviser will work with you to formulate a progression to suit your academic preparation.

<sup>2</sup> Please refer to [monash.edu/study](https://monash.edu/study) for further details on which minors can be undertaken within individual specialisations.

<sup>3</sup> The common first year is not available for the Biomedical engineering specialisation. Apply directly to the Bachelor of Biomedical Engineering if you intend to choose this specialisation.

<sup>4</sup> Please note that there are different scores required for entry into Biomedical Engineering (Honours). Please see page 52 for further details.

<sup>5</sup> The scores provided are to be used as a guide only, and are either the lowest selection rank to which an offer was made in 2022 or an estimate (E).

<sup>6</sup> For double degree courses you must meet the prerequisites for both courses. See pages 56-59 for a full list of double degree prerequisites. Double degrees are only available for some engineering specialisations. Course codes and CRICOS codes for double degrees are available at [monash.edu/study](https://monash.edu/study). See [monash.edu/study](https://monash.edu/study) for further details.

<sup>7</sup> The accelerated master's pathway is not available with all specialisations. Higher entry requirements apply for the Engineering (Honours)/master's accelerated pathway. See [monash.edu/study](https://monash.edu/study) for further details.



# Bachelor of COMPUTER SCIENCE

**COURSE CODE:** C2001

**LOCATION:** CLAYTON  
**DURATION:** 3 YEARS  
**INTAKE:** FEBRUARY AND JULY

• PROFESSIONALLY ACCREDITED

### DEGREE AWARDED

The degree you're awarded will reflect your chosen specialisation.

Computer scientists drive everything from search engines to daily weather reports, animation, cybersecurity and scientific discoveries. When you study computer science, you'll develop the skills to design data structures, develop algorithms and create software to solve real-world computational challenges.

## Specialisations

- Advanced computer science
- Data science.

## Entry requirements

COURSE	⌚	ATAR <sup>1</sup>	IB <sup>1</sup>	MG
Computer Science	3	84.15	31	80
<b>Double degree<sup>2</sup> with</b>				
Commerce	4	92.10	35	88
Engineering (Honours) <sup>3</sup>	5	90.15	34	88
Laws (Honours)	5.25	97.10	39	94
Science	4	85.55	31	80

## Prerequisite studies

### VCE

**English:** Units 3 and 4: a study score of at least 27 in English (EAL) or 25 in English other than EAL. **Maths:** Units 3 and 4: a study score of at least 25 in either Mathematical Methods (any) or Specialist Mathematics.

### IB

**English:** Level 1. **Maths:** Level 3. For prerequisite subject requirements, please refer to page 50.

## Career options

Database administrator, data analytics specialist, forensic computer analyst, IT consultant, machine learning engineer, software developer, specialist programmer.



Accredited by the Australian Computing Society.



### DID YOU KNOW?

We're ranked in the world's top 100 for 'Computer Science and Information Systems'.

(QS World University Rankings by Subject, 2021)

# Bachelor of COMPUTER SCIENCE ADVANCED (Honours)

**COURSE CODE:** C3001

**LOCATION:** CLAYTON  
**DURATION:** 4 YEARS  
**INTAKE:** FEBRUARY

• PROFESSIONALLY ACCREDITED

This honours version of the Bachelor of Computer Science is for high-achieving students who have a research focus. It offers you all the benefits of the advanced computer science or data science specialisation, plus a stream of hands-on projects that engage you in research.

## Entry requirements

COURSE	⌚	ATAR <sup>1</sup>	IB <sup>1</sup>	MG
Computer Science Advanced (Honours)	4	95.70	38	90

## Prerequisite studies

### VCE

**English:** Units 3 and 4: a study score of at least 27 in English (EAL) or 25 in English other than EAL. **Maths:** Units 3 and 4: a study score of at least 25 in either Mathematical Methods (any) or Specialist Mathematics.

### IB

**English:** Level 1. **Maths:** Level 3. For prerequisite subject requirements, please refer to page 50.

## Career options

Chief information officer, data architect, data engineer, IT consultant, scientific researcher, specialist programmer, technical analyst.

## Gain real-world experience

The Industry-based Learning program allows eligible IT students to enhance their education through a practical placement with one of our leading global or Australian industry partners.

Our Industry Experience Studio Projects also enable learners to build IT-driven solutions with industry mentors.

1 The scores provided are to be used as a guide only, and are either the lowest selection rank to which an offer was made in 2022 or an estimate (E).

2 For double degree courses you must meet the prerequisites for both courses. See pages 56-59 for a full list of double degree prerequisites. Course codes and CRICOS codes for double degrees are available at [monash.edu/study](http://monash.edu/study)

3 A double degree with Engineering is only available with the Advanced Computer Science specialisation, and can only be studied as a double degree with specific Engineering specialisations; see [monash.edu/study](http://monash.edu/study) for full details.

# Bachelor of INFORMATION TECHNOLOGY

**COURSE CODE:** C2000

**LOCATION:** CLAYTON

**DURATION:** 3 YEARS

**INTAKE:** FEBRUARY AND JULY


- PROFESSIONALLY ACCREDITED
- INDIGENOUS ENTRY PATHWAY

IT is everywhere, but its power comes from the experts who create the IT systems upon which we all rely. This highly practical course gives you the problem-solving skills to drive the ongoing revolution in the way we communicate, conduct business and experience the world.

At our leading IT faculty, you'll learn from the best in an innovative environment.

Our comprehensive range of majors, minors and double degrees gives you the flexibility to pursue your interests, develop your strengths and explore new areas.

## Entry requirements

COURSE		ATAR <sup>1</sup>	IB <sup>1</sup>	MG
Information Technology	3	80.05	29	75
<b>Double degree<sup>2</sup> with</b>				
Arts	4	82.55	30	78
Business	4	78.05	28	75
Commerce	4	87.80	33	86
Criminology	4	77	27	75
Design	4	83.05	30	75
Engineering (Honours) <sup>3</sup>	5	88.85	33	86
Fine Art <sup>4</sup>	4	RC	RC	RC
Global studies	4	E: 81.75	E: 29	75
Laws (Honours)	5.25	97	39	94
Science	4	86.25	32	80

## Prerequisite studies

### VCE

**English:** Units 3 and 4: a study score of at least 27 in English (EAL) or at least 25 in English other than EAL. **Maths:** Units 1 and 2: satisfactory completion of two units (any study combination) of General Mathematics, Mathematical Methods or Specialist Mathematics.

### IB

**English:** Level 1. **Maths:** Level 1. For prerequisite subject requirements, please refer to page 50.

## Majors and minors

	Major	Minor
3D modelling and animation		•
Business information systems	•	•
Computer networks and security	•	•
Computer science		•
Cybersecurity		•
Data science		•
Games design		•
Games development	•	•
Interactive media	•	•
IT for business		•
Mobile apps development		•
Software development	•	•
Software engineering		•
Web development		•

## Career options

Animator, business analyst, cloud architect, computer forensic investigator, cybersecurity specialist, games/interactive media developer, project manager, web developer.

### Get an edge with real-world experience

Open to eligible students, our Industry-based Learning placement gives you professional experience in a corporate setting. We also have Industry Experience Studio projects which see you building real solutions for real clients.

<sup>1</sup> The scores provided are to be used as a guide only, and are either the lowest selection rank to which an offer was made in 2022 or an estimate (E). RC – Range of criteria.

<sup>2</sup> For double degree courses you must meet the prerequisites for both courses. See pages 56-59 for a full list of double degree prerequisites. Course codes and CRICOS codes for double degrees are available at [monash.edu/study](http://monash.edu/study)

<sup>3</sup> This double degree isn't available with all engineering specialisations; see [monash.edu/study](http://monash.edu/study) for full details.

<sup>4</sup> This double degree is only available with the Fine Art specialisation.



## Bachelor of LAWS (Honours)

COURSE CODE: L3001

LOCATION: CLAYTON

DURATION: 4 YEARS\*

INTAKE: FEBRUARY


• PROFESSIONALLY ACCREDITED

\* This is a 4.25-year course taken as an accelerated course where you'll do the equivalent of 4.25 years of study in four calendar years.

Whether you aspire to work in a top-tier law firm, in a multinational corporation or as an advocate for justice, take the first step with Monash Law. Law teaches you how to think critically, analyse complex problems and articulate solutions. These skills are demanded by employers across multiple roles and industries. Monash Law graduates are among the highest-earning and most employable professionals in Australia and around the world.

At Monash, we have the largest range of elective units of any law school in Australia so you can customise your degree and pursue areas of study that you're passionate about.

### Entry requirements

COURSE		ATAR <sup>1</sup>	IB <sup>1</sup>	MG
Bachelor of Laws (Honours)	4.25	97.10	39	94
<b>Double degree<sup>2</sup> with</b>				
Arts	5.25	97	39	94
Biomedical Science	5.25	97.25	40	94
Commerce	5.25	97	39	94
Computer Science	5.25	97.10	39	94
Criminology	5.25	97	39	94
Engineering (Honours) <sup>3</sup>	6.25	97.30	40	94
Global Studies	5.25	97.05	39	94
Information Technology	5.25	97	39	94
Music	5.25	RC	RC	RC
Politics, Philosophy and Economics	5.25	97 RC	39 RC	94 RC
Science	5.25	97	39	94

### Prerequisite studies

#### VCE

**English:** Units 3 and 4: a study score of at least 35 in English (EAL) or 30 in English other than EAL.

#### IB

**English:** Level 2. For prerequisite subject requirements, please refer to page 50.

### Career options

Barrister, solicitor, legal roles within national, international and boutique law firms, in-house legal counsel in major corporations, non-profits and start-ups across all industries.

### Guaranteed clinical placements

At Monash Law, you're guaranteed the opportunity of a clinical legal education experience. This is your chance to work hand-in-hand with expert lawyers on real cases, helping real clients, and learning how to be a great lawyer. And it all counts as credit towards your Laws degree.

1 The scores provided are to be used as a guide only, and are either the lowest selection rank to which an offer was made in 2022 or an estimate (E). RC – Range of criteria.

2 For double degree courses you must meet the prerequisites for both courses. See pages 56-59 for a full list of double degree prerequisites.

3 Only available with some specialisations; see [monash.edu/study](https://www.monash.edu/study) for full details.



Image: The state-of-the-art Moot Court at Monash Law, Clayton campus.

# Bachelor of BIOMEDICAL SCIENCE

COURSE CODE: M2003

LOCATION: CLAYTON  
DURATION: 3 YEARS  
INTAKE: FEBRUARY


## DEGREE AWARDED

Bachelor of Biomedical Science, or  
Bachelor of Biomedical Science (Scholars Program).

By studying biomedical science, you'll explore the various body systems and the interactions between organs, issues and cells, as well as the complex processes that occur to allow us to function and develop normally. You'll also learn how disruption of these processes can lead to disease and you'll gain an understanding of how this knowledge fits into the big picture of human health.

Design your own degree: you'll complete a specialised program and explore electives based on your interests, in areas like biochemistry, immunology and physiology. You can even choose subjects in business or law, to diversify your degree.

## Entry requirements

COURSE		ATAR <sup>1</sup>	IB <sup>1</sup>	MG
Biomedical Science	3	91.05	34	85
Biomedical Science (Scholars Program) <sup>3</sup>	3	98.05	41	N/A
<b>Double degree<sup>2</sup> with</b>				
Commerce	4	92.10	35	88
Engineering (Honours) <sup>4</sup>	5	92.20	35	88
Laws (Honours)	5.25	97.25	40	94
Science <sup>5</sup>	4	91.20	34	85

## Prerequisite studies<sup>3</sup>

### VCE

**English:** Units 3 and 4: a study score of at least 27 in English (EAL) or 25 in English other than EAL. **Maths or Science:** Units 3 and 4: a study score of at least 25 in Mathematical Methods (any), Specialist Mathematics or Physics. **Science:** Units 3 and 4: a study score of at least 25 in Chemistry.

### IB

**English:** Level 1. **Maths or Physics:** Level 3. **Science:** Chemistry. For prerequisite subject requirements, please refer to page 50.

## Career options

Allied health, forensics, government sector, graduate medicine, media and communications, medical research and working in industry.

## Scholars Program for high achievers

If you're a high-achieving student, you can apply for access to our Scholars Program, where you'll complete the same academic program as other students but also have access to a range of development opportunities.

# Bachelor of HEALTH SCIENCES


COURSE CODE: M2014

LOCATION: CAULFIELD  
DURATION: 3 YEARS  
INTAKE: FEBRUARY

• INDIGENOUS ENTRY PATHWAY

This course will give you a solid foundation in health science, a broad overview of healthcare, and skills in identifying, investigating, analysing and assessing health issues. This foundation allows you to tailor your course to pursue a variety of career paths in the health sciences.

## Entry requirements

COURSE		ATAR <sup>1</sup>	IB <sup>1</sup>	MG
Health Sciences	3	73.30	26	70

## Prerequisite studies

### VCE

**English:** Units 3 and 4: a study score of at least 27 in English (EAL) or 25 in English other than EAL.

### IB

**English:** Level 1. For prerequisite subject requirements, please refer to page 50.

## Career options

Clinical research, dietetics, forensic sciences, government, health education, healthcare marketing, health promotion, nursing, occupational therapy, public health, social work.

<sup>1</sup> The scores provided are to be used as a guide only, and are either the lowest selection rank to which an offer was made in 2022 or an estimate (E).

<sup>2</sup> For double degree courses you must meet the prerequisites for both courses. See pages 56-59 for a full list of double degree prerequisites. Course codes and CRICOS codes for double degrees are available at [monash.edu/study](http://monash.edu/study)

<sup>3</sup> Higher entry requirements and prerequisites apply for the Biomedical Science (Scholars Program). See page 52 for further details or go to [monash.edu/study](http://monash.edu/study)

<sup>4</sup> This double degree isn't available with all specialisations; see [monash.edu/study](http://monash.edu/study) for full details.

<sup>5</sup> The 'genetics and genomics' major, minor and extended major are not available in the double degree course Bachelor of Science and Bachelor of Biomedical Science.



## Bachelor of MEDICAL SCIENCE AND DOCTOR OF MEDICINE

COURSE CODE: M6011

LOCATION: CLAYTON  
DURATION: 5 YEARS  
INTAKE: FEBRUARY


- PROFESSIONALLY ACCREDITED
- INDIGENOUS ENTRY PATHWAY
- INTERVIEW

Monash is the only Victorian university to offer two entry points for students considering a career in medicine – one directly from school, and a graduate-entry pathway.

For school-leaver entry, the first two years are largely campus-based, although some city and rural clinical placements are possible. Interdisciplinary units introduce the basic medical and behavioural sciences of anatomy, biochemistry, genetics, immunology, microbiology, pathology, pharmacology, physiology, psychology and sociology.

If you're considering graduate-entry into Medicine, please go to our website for further information [monash.edu/study/course/M6018](https://monash.edu/study/course/M6018)

### Entry requirements

COURSE		ATAR	IB	MG
Medicine	5	RC	RC	RC

### Prerequisite studies

#### VCE

**English:** Units 3 and 4: a study score of at least 35 in English (EAL) or 30 in English other than EAL. **Science:** Units 3 and 4: a study score of at least 30 in Chemistry.

#### IB

**English:** Level 2. **Science:** Higher score in Chemistry only. For prerequisite subject requirements, please refer to page 50.

### Direct entry selection requirements

- You'll need to undertake the University Clinical Aptitude Test (UCAT)
- Interview – you may be invited to attend an interview based on your UCAT and ATAR results. For more information about the UCAT, please visit [www.ucat.edu.au](https://www.ucat.edu.au)

### Extra requirements

- Mandatory immunisation requirements
- National Police Records Check (annual requirement)
- Working with Children Check
- A current registered Level 2 First Aid certificate (by the end of the first semester of the course)
- National Disability Insurance Scheme (NDIS) Worker screening check
- Registration with the Australian Health Practitioner Regulation Agency.

### Career options

Cardiology, dermatology, emergency medicine, general practice, gynaecology, obstetrics, ophthalmology, paediatrics, pathology, psychiatry, radiology, surgery.

## Bachelor of NURSING


COURSE CODE: M2006

LOCATION: CLAYTON, PENINSULA  
DURATION: 3 YEARS  
INTAKE: FEBRUARY

- PROFESSIONALLY ACCREDITED
- INDIGENOUS ENTRY PATHWAY

Vibrancy and currency in research, and links to major teaching hospitals – Monash nursing graduates are sought-after worldwide. Acquire the skills to become a registered nurse who can provide leadership and care across the age spectrum, and gain the ability to provide care in multiple settings, including acute care, primary healthcare and health promotion.

### Entry requirements

COURSE		ATAR <sup>1</sup>	IB <sup>1</sup>	MG
Nursing (Clayton)	3	77.15 RC	27 RC	70 RC
Nursing (Peninsula)	3	72.20 RC	25 RC	
Nursing (Scholars Program) (Clayton)	3	90.55 RC	34 RC	N/A
Nursing (Scholars Program) (Peninsula)	3	90.50 RC		

### Prerequisite studies

#### VCE

**English:** Units 3 and 4: a study score of at least 27 in English (EAL) or 25 in English other than EAL. **Maths:** Units 1 and 2: satisfactory completion in two units (any study combination) of General Mathematics, Mathematical Methods or Specialist Mathematics; or Units 3 and 4: any mathematics.

#### IB

**English:** Level 1. **Maths:** Level 1. For prerequisite subject requirements, please refer to page 50.

### Extra requirements<sup>2</sup>

- Mandatory immunisation requirements
- National Police Records Check (annual requirement)
- Working with Children Check
- Awareness of drugs administration policy relevant to your particular year of study
- English language requirements of self-declaration<sup>3</sup>
- National Disability Insurance Scheme (NDIS) Worker screening check.

### Career options

Acute hospital care, aged care, community-based care, medical and surgical, mental health, rehabilitation, palliative care, paediatrics and other specialities.

### Bachelor of Nursing Scholars Program

The Bachelor of Nursing Scholars Program has been designed for high-performing students interested in nursing. The point of difference from the Bachelor of Nursing is the additional engagement in an academic support program.

<sup>1</sup> The scores provided are to be used as a guide only, and are either the lowest selection rank to which an offer was made in 2022 or an estimate (E). RC – Range of criteria.

<sup>2</sup> Applicants must be 18 years of age by 30 September 2023 in order to meet the mandatory requirements for clinical placements. Underage applicants who cannot meet this requirement are not eligible for an offer. Please refer to the mandatory compliance web page for additional information, [monash.edu/medicine/study/student-services/mandatory-compliance](https://monash.edu/medicine/study/student-services/mandatory-compliance). You'll undertake some online assessments throughout the course. To access these courses you'll need to download specific software that requires a webcam. If you don't have a webcam available, you will need to undertake the online assessments on campus in the computer lab or library.

<sup>3</sup> In addition to meeting the VCE English prerequisite, applicants must demonstrate English language proficiency either by providing a written declaration that English is their primary language or evidence that they have achieved the minimum English language test results as specified in the Nursing and Midwifery Board of Australia's (NMBA) English language skills registration standard. Information on this requirement can be found at [monash.edu/study](https://monash.edu/study)

# Bachelor of NURSING AND MIDWIFERY (Honours)


COURSE CODE: M3007

LOCATION: PENINSULA  
 DURATION: 4 YEARS  
 INTAKE: FEBRUARY

• PROFESSIONALLY ACCREDITED

Nurses and midwives are among the most valued members of any community. The versatility of the nurse and midwife is increasingly important in Australian and international health services. This joint qualification makes you highly employable in many practice settings, including rural and remote areas where being a multi-skilled practitioner is highly valued.

## Entry requirements

COURSE		ATAR <sup>1</sup>	IB <sup>1</sup>	MG
Nursing and Midwifery (Honours)	4	91 RC	34 RC	82 RC

## Prerequisite studies

### VCE

**English:** Units 3 and 4: a study score of at least 27 in English (EAL) or 25 in English other than EAL. **Maths:** Units 1 and 2: satisfactory completion in two units (any study combination) of General Mathematics, Mathematical Methods or Specialist Mathematics; or Units 3 and 4: any mathematics.

### IB

**English:** Level 1. **Maths:** Level 1. For prerequisite subject requirements, please refer to page 50.

## Extra requirements<sup>2</sup>

- Mandatory immunisation requirements
- National Police Records Check (annual requirement)
- Working with Children Check
- National Disability Insurance Scheme (NDIS) Worker screening check
- English language requirements of self-declaration<sup>3</sup>
- Awareness of drugs administration policy relevant to your particular year of study. Refer to the faculty's clinical guidelines webpage.

## Career options

Acute hospital care, aged care, community-based care, mental health, rehabilitation, midwifery (including antenatal, birth and postnatal care).

# Bachelor of NUTRITION SCIENCE

COURSE CODE: M2001

LOCATION: CLAYTON  
 DURATION: 3 YEARS  
 INTAKE: FEBRUARY

• PROFESSIONALLY ACCREDITED

### DEGREE AWARDED

Bachelor of Nutrition Science, or  
 Bachelor of Nutrition Science (Scholars Program)

In this course you'll explore the multi-faceted discipline of human nutrition, gain an appreciation of the broad scope of food in society, develop an in-depth knowledge of nutritional and biomedical science, and understand the role of nutrition in health and disease.


As you progress through the course you'll have the opportunity to undertake a work placement in a nutrition-related industry, work alongside nutrition researchers on a project, or apply for the opportunity to study nutrition overseas at a partner university.

As the only Australian course accredited by the UK Association for Nutrition, our graduates can register and pursue international professional nutrition careers in the UK.

## A pathway to graduate studies

Both the Bachelor of Nutrition Science (Scholars Program) and Bachelor of Nutrition Science provide a pathway to our Master of Dietetics which is accredited by Dietitians Australia and enables graduates to apply for accreditation as dietitians.

## Entry requirements

COURSE		ATAR <sup>1</sup>	IB <sup>1</sup>	MG
Nutrition Science	3	75.10	26	70
Nutrition Science (Scholars Program)	3	92.45	35	N/A

## Prerequisite studies

### VCE

**English:** Units 3 and 4: a study score of at least 27 in English (EAL) or 25 in English other than EAL. **Science:** Units 3 and 4: a study score of at least 25 in Chemistry or Biology.

### IB<sup>4</sup>

**English:** Level 1. **Science:** Chemistry or Biology only. For prerequisite subject requirements, please refer to page 50.

## Extra requirements

Working with Children Check.

## Career options

Dietetics, food industry, food science, government and non-government agencies, nutrition research, public health nutrition, sports nutrition.

## Scholars Program for high achievers

If you're a high-achieving student, you can apply for access to our Scholars Program, which provides a range of extracurricular opportunities to engage with research staff and guaranteed entry to the 1.5-year Master of Dietetics if you maintain a grade average of 60 per cent or above.

<sup>1</sup> The scores provided are to be used as a guide only, and are either the lowest selection rank to which an offer was made in 2022 or an estimate (E). RC – Range of criteria.

<sup>2</sup> Applicants must be 18 years of age by 31 March 2023, to meet the mandatory requirements for clinical placements. Underage applicants who cannot meet this requirement are not eligible for an offer. Please refer to the mandatory compliance web page for additional information, [monash.edu/medicine/study/student-services/mandatory-compliance](https://monash.edu/medicine/study/student-services/mandatory-compliance). You'll undertake some online assessments throughout the course. To access these courses you'll need to download specific software that requires a webcam. If you don't have a webcam available, you'll need to undertake the online assessments on campus in the computer lab or library.

<sup>3</sup> In addition to meeting the VCE English prerequisite, applicants must demonstrate English language proficiency either by providing a written declaration that English is their primary language or evidence that they have achieved the minimum English language test results as specified in the Nursing and Midwifery Board of Australia's (NMBA) English language skills registration standard. Information on this requirement can be found at [monash.edu/study](https://monash.edu/study).



## Bachelor of OCCUPATIONAL THERAPY (Honours)

COURSE CODE: M3001


LOCATION: PENINSULA  
DURATION: 4 YEARS  
INTAKE: FEBRUARY

- PROFESSIONALLY ACCREDITED
- INDIGENOUS ENTRY PATHWAY

Occupational therapists help people participate to their fullest potential in self-care, play, leisure, education, work, sleep or social activities, as well as promote health and wellbeing.

Our course is accredited by the Occupational Therapy Council Limited, and is recognised by the World Federation of Occupational Therapy which can open up doors for you to work in other countries (each country has its own registration requirements for overseas graduates).

### Entry requirements

COURSE		ATAR <sup>1</sup>	IB <sup>1</sup>	MG
Occupational Therapy (Honours)	4	85.15	31	78

### Prerequisite studies

#### VCE<sup>2</sup>

**English:** Units 3 and 4: a study score of at least 27 in English (EAL) or 25 in English other than EAL.

#### IB

**English:** Level 1. For prerequisite subject requirements, please refer to page 50.

### Extra requirements<sup>3</sup>

- Mandatory immunisation requirements
- National Police Records Check (annual requirement)
- National Disability Insurance Scheme (NDIS) Worker screening check
- Working with Children Check

### Career options

Addiction services, aged care, early intervention programs, education, ergonomics, hand therapy, mental health, neurology, oncology, orthopaedics, paediatrics, primary health care, private practice, public health, research, palliative care, rehabilitation, vocational rehabilitation/return-to-work.

#### DID YOU KNOW?

If you're a high-achieving undergraduate student, you'll have the potential to enrol in our Honours research stream, which provides you with the opportunity to engage with research staff and complete a thesis.

## Bachelor of PARAMEDICINE


COURSE CODE: M2011

LOCATION: PENINSULA  
DURATION: 3 YEARS  
INTAKE: FEBRUARY

- PROFESSIONALLY ACCREDITED
- INDIGENOUS ENTRY PATHWAY

In this challenging and dynamic course, you'll study the structure and function of the human body, human development across the life span, and disease processes. You'll also develop core knowledge and skills to treat cardiovascular, respiratory, mental health, traumatic and medical emergency presentations, and learn specific care of maternal, neonatal, geriatric and paediatric patients.

### Entry requirements

COURSE		ATAR <sup>1</sup>	IB <sup>1</sup>	MG
Paramedicine	3	87.95	33	79

### Prerequisite studies

#### VCE

**English:** Units 3 and 4: a study score of at least 30 in English (EAL) or 25 in English other than EAL. **Maths:** Units 3 and 4: a study score of at least 22 in one of Mathematical Methods (any) or Specialist Mathematics, or 25 in Further Mathematics.

#### IB

**English:** Level 1. **Maths:** Level 2. For prerequisite subject requirements, please refer to page 50.

### Extra requirements<sup>3</sup>

- Mandatory immunisation requirements
- National Police Records Check (annual requirement)
- Working with Children Check
- Ambulance Victoria medical and fitness prerequisites; visit [www.ambulance.vic.gov.au](http://www.ambulance.vic.gov.au) for details.

### Career options

Paramedic in national and international ambulance services, private services, industry or community-based emergency health services.

### A pathway to graduate studies

We offer the only paramedic course from a Group of Eight University. Following the completion of your degree, you'll have the opportunity to undertake the Master of Specialist Paramedic Practice. Monash University has been a leader in graduate education and training for the intensive care paramedic role, as well as within the field of aeromedical retrieval.

<sup>1</sup> The scores provided are to be used as a guide only, and are either the lowest selection rank to which an offer was made in 2022 or an estimate (E).

<sup>2</sup> While not prerequisite subjects, it's recommended that you undertake VCE Units 3 and 4 of at least two of the following: biology, chemistry, geography, health and human development, psychology or physical education.

<sup>3</sup> For the **Bachelor of Occupational Therapy**, applicants must be 18 years of age by 1 July 2023 to meet the mandatory requirements for clinical placements. For the **Bachelor of Paramedicine**, applicants must be 18 years of age by 30 September 2023 in order to meet the mandatory requirements for clinical placements. Underage applicants who cannot meet this requirement are not eligible for an offer. Please refer to the mandatory compliance web page for additional information, [monash.edu/medicine/study/student-services/mandatory-compliance](http://monash.edu/medicine/study/student-services/mandatory-compliance)

# Bachelor of PHYSIOTHERAPY (Honours)

COURSE CODE: M3002

LOCATION: PENINSULA  
DURATION: 4 YEARS  
INTAKE: FEBRUARY

• PROFESSIONALLY ACCREDITED

Prepare to flourish in one of the most in-demand healthcare professions. A degree in physiotherapy prepares you to work independently or as part of a team of healthcare professionals. You'll gain the skills to practise as a physiotherapist, using exercise, movement analysis, manual therapy and specialist techniques to restore, improve and promote health. After completing your degree, you'll be eligible to apply for registration to the Physiotherapy Board of Australia.

## Entry requirements

COURSE		ATAR <sup>2</sup>	IB <sup>2</sup>	MG
Physiotherapy (Honours)	4	96.95	39	93

## Prerequisite studies

### VCE

**English:** Units 3 and 4: a study score of at least 35 in English (EAL) or 30 in English other than EAL. **Science:** Units 3 and 4: a study score of at least 25 in two of Biology, Chemistry, Mathematical Methods (any), Specialist Mathematics or Physics.

### IB

**English:** Level 2. **Science/Maths:** two of chemistry, biology, physics or Level 3 maths. For prerequisite subject requirements, please refer to page 50.

## Extra requirements<sup>3</sup>

- Mandatory immunisation and vaccination requirements
- National Police Records Check (annual requirement)
- National Disability Insurance Scheme (NDIS) Worker screening check
- Working with Children Check

## Career options

Public health, private practice, sports physiotherapy, rehabilitation, paediatrics, research.

# Bachelor of PSYCHOLOGY (Honours)

COURSE CODE: M3005

LOCATION: CLAYTON  
DURATION: 4 YEARS  
INTAKE: FEBRUARY

• PROFESSIONALLY ACCREDITED

Designed for those with a passion for understanding human cognition and behaviour, this course provides a comprehensive education in human psychology – from normal to abnormal psychology, and from the genetic/molecular level to the individual and group-behavioural level.

If you successfully complete the first three years (144 points<sup>1</sup>) of the course but don't meet the academic standard hurdle for the fourth year you'll graduate with the Bachelor of Psychological Science. You may then apply for other fourth-year psychology programs at Monash, in particular, the Graduate Diploma in Professional Psychology or the Graduate Diploma in Psychology Advanced.

## Entry requirements

COURSE		ATAR <sup>2</sup>	IB <sup>2</sup>	MG
Psychology (Honours) <sup>1</sup>	4	89.50	33	80

## Prerequisite studies

### VCE

**English:** Units 3 and 4: a study score of at least 27 in English (EAL) or 25 in English other than EAL.

### IB

**English:** Level 1. For prerequisite subject requirements, please refer to page 50.

## Career options

Clinical neuropsychology, clinical psychology, educational and developmental psychology, health services, human resources and management, not-for-profit organisations, organisational psychology, protective services, research, social services.

<sup>1</sup> Students must normally complete 144 credit points and achieve a minimum of a distinction (70 per cent) average in PSY3041, PSY3051, PSY3032 and PSY3062 in order to proceed to the fourth year of study.

<sup>2</sup> The scores provided are to be used as a guide only, and are either the lowest selection rank to which an offer was made in 2022 or an estimate (E).

<sup>3</sup> Applicants must be 18 years of age by the start of the second year of the course to meet the mandatory requirements for clinical placements.



## Bachelor of PUBLIC HEALTH

COURSE CODE: M2012

LOCATION: CAULFIELD


DURATION: 3 YEARS

INTAKE: FEBRUARY

- INDIGENOUS ENTRY PATHWAY

From promoting good health, through to preventing disease and managing illness and disability, public health focuses on populations and communities rather than on individuals. This course focuses on developing, implementing and evaluating programs and policies to promote health and prevent disease and injury, as well as undertaking public health research.

### Entry requirements

COURSE		ATAR <sup>1</sup>	IB <sup>1</sup>	MG
Public Health	3	85.80	31	79

### Prerequisite studies

#### VCE

**English:** Units 3 and 4: a study score of at least 27 in English (EAL) or 25 in English other than EAL.

#### IB

**English:** Level 1. For prerequisite subject requirements, please refer to page 50.

### Career options

Clinical research, disease prevention, government services, health planning and management, health promotion, non-government organisations, practice and policy, social work.

## Bachelor of RADIATION SCIENCES

COURSE CODE: M2017

LOCATION: CLAYTON\*

DURATION: 3 YEARS

INTAKE: FEBRUARY

- INDIGENOUS ENTRY PATHWAY

#### DEGREE AWARDED

Bachelor of Radiation Sciences

Bachelor of Radiation Sciences (Informatics).


\* Some units will be taught at Caulfield campus.

Radiation therapy is an exciting and engaging healthcare field that uses ionising radiations for the treatment of cancer and benign conditions. Studying radiation sciences at Monash allows you to combine scientific and technical knowledge with studies in health and patient care, and prepares you for an 18-month graduate master's program in radiation therapy.

### Specialisations

- Radiation Sciences
- Informatics – combines radiation sciences with IT application and knowledge.

### Entry requirements

COURSE		ATAR <sup>1</sup>	IB <sup>1</sup>	MG
Radiation Sciences	3			
Radiation Sciences – Informatics specialisation	3	82.35	30	80

### Prerequisite studies

#### VCE

**English:** Units 3 and 4: a study score of at least 27 in English (EAL) or 25 in English other than EAL. **Maths:** Units 3 and 4: a study score of at least 25 in Mathematical Methods (any) or Specialist Mathematics.

#### IB

**English:** Level 1. **Maths:** Level 3. For prerequisite subject requirements, please refer to page 50.

### Extra requirements<sup>2</sup>

- Mandatory immunisation requirements
- National Police Records Check (annual requirement)
- Working with Children Check

### Career options

Challenging and fulfilling opportunities await those who successfully complete the program. There's an increasing demand for adaptable radiation therapists in response to the ageing population, expansion of services in regional Australia, and organic growth of the industry.

### Gain general registration as a radiation therapist<sup>3</sup>

If you're interested in becoming a registered radiation therapist through the Medical Radiations Practice Board of Australia (MRPBA), you'll need to complete additional studies – for example, Monash's Master of Radiation Therapy. Once you've successfully completed this master's, you'll then be eligible to register with the MRPBA.

For more information, visit [monash.edu/study/course/M6004](https://monash.edu/study/course/M6004)

<sup>1</sup> The scores provided are to be used as a guide only, and are either the lowest selection rank to which an offer was made in 2022 or an estimate (E).

<sup>2</sup> These extra requirements only apply to students who undertake placement electives. Applicants must be 18 years of age by the start of the second year of the course to meet the mandatory requirements for clinical placements.

<sup>3</sup> Some options may require additional study.

## Bachelor of RADIOGRAPHY AND MEDICAL IMAGING

COURSE CODE: M3006

LOCATION: CLAYTON

DURATION: 4 YEARS


INTAKE: FEBRUARY

• PROFESSIONALLY ACCREDITED

This course is designed to develop expert skills to become a registered radiographer, enabling patient diagnosis and management by using X-rays – including CT scanning, ultrasound and magnetic resonance imaging (MRI) – to create diagnostic images for analysis and interpretation.

Radiographers are also responsible for implementing best-practice imaging protocols. The program is designed to allow closely related integration between the classroom and the clinical workplace.

### Entry requirements

COURSE		ATAR <sup>2</sup>	IB <sup>2</sup>	MG
Radiography and Medical Imaging (Honours)	3	98	41	93

### Prerequisite studies

#### VCE

**English:** Units 3 and 4: a study score of at least 35 in English (EAL) or 30 in English other than EAL. **Maths:** Units 3 and 4: a study score of at least 25 in one of Mathematical Methods (any) or Specialist Mathematics. **Science:** Units 3 and 4: a study score of at least 25 in Biology or Physics.

#### IB

**English:** Level 2. **Maths:** Level 3. **Science:** Physics or biology only. For prerequisite subject requirements, please refer to page 50.

### Extra requirements<sup>3</sup>

- Mandatory immunisation requirements
- National Police Records Check (annual requirement)
- Working with Children Check
- Level 1 First Aid certificate.

### Career options<sup>4</sup>

- Specialist practitioner in CT, MRI or digital subtraction angiography
- Sonographer
- Applications specialist in digital imaging or x-ray and medical imaging equipment
- Research in medical imaging.

## Bachelor of PHARMACEUTICAL SCIENCE

COURSE CODE: P2001

LOCATION: PARKVILLE

DURATION: 3 YEARS


INTAKE: FEBRUARY

In 2021, Monash was ranked No.2 in the world for pharmacy and pharmacology<sup>1</sup> (only Oxford ranked higher). Under the guidance of expert academics, you'll study the chemistry, biology, biomedicine and delivery technology of medicines and improve human health by learning how to develop more reliable, accessible and effective medicines.

We offer a hands-on course where you'll gain the technical and professional skills that will enable you to put your knowledge into practice.

Monash's long-standing relationships with major employers in the pharmaceutical sector and related industries will put you in a competitive position where you'll graduate armed with the skills employers are looking for.

### Entry requirements

COURSE		ATAR <sup>2</sup>	IB <sup>2</sup>	MG
Pharmaceutical Science	3	84.05	30	75
<b>Double degree<sup>5</sup> with</b>				
Engineering (Honours) <sup>6</sup>	5	90.10	34	86

### Prerequisite studies

#### VCE

**English:** Units 3 and 4: a study score of at least 27 in English (EAL) or 25 in English other than EAL. **Maths:** Units 3 and 4: a study score of at least 25 in one of Mathematical Methods (any) or Specialist Mathematics. **Science:** Units 3 and 4: a study score of at least 25 in Chemistry.

#### IB

**English:** Level 1. **Maths:** Level 3. **Science:** Chemistry only. For prerequisite subject requirements, please refer to page 50.

### Career options

Academia, biomedical research, biotechnology, clinical trials, drug analysis, pharmaceutical industry, regulatory affairs, research and development, toxicology.

<sup>1</sup> Ranked No. 2 for pharmacy and pharmacology, QS World University Rankings by subject, 2021.

<sup>2</sup> The scores provided are to be used as a guide only, and are either the lowest selection rank to which an offer was made in 2022 or an estimate (E).

<sup>3</sup> Applicants must be 18 years of age by 31 March of the first year of the course, to meet the mandatory requirements for clinical placements. Underage applicants who can not meet this requirement are not eligible for an offer. Please refer to the mandatory compliance web page for additional information, [monash.edu/medicine/study/student-services/mandatory-compliance](https://monash.edu/medicine/study/student-services/mandatory-compliance)

<sup>4</sup> Some career options may require additional study.

<sup>5</sup> For double degree courses you must meet the prerequisites for both courses. See pages 56-59 for a full list of double degree prerequisites. Course codes and CRICOS codes for double degrees are available at [monash.edu/study](https://monash.edu/study)

<sup>6</sup> Only available with the Chemical engineering specialisation; see [monash.edu/study](https://monash.edu/study)

## Bachelor of PHARMACEUTICAL SCIENCE ADVANCED (Honours)

COURSE CODE: P3002

LOCATION: PARKVILLE

DURATION: 4 YEARS


INTAKE: FEBRUARY

### DEGREE AWARDED

Bachelor of Pharmaceutical Science Advanced (Honours),  
Bachelor of Pharmaceutical Science Advanced (Honours)  
(Scholars Program).

This advanced version of the Bachelor of Pharmaceutical Science has been tailored for high-achieving students. You'll learn how to develop reliable, accessible and effective medicinal products, and translate new drug targets into treatments for patients. The third year of the course includes an extended placement in either research or industry, and the fourth (honours) year involves conducting a substantial research project that culminates with a written thesis.

### Entry requirements

COURSE		ATAR <sup>2</sup>	IB <sup>2</sup>	MG
Pharmaceutical Science Advanced (Honours)	4	90.05	34	84
Pharmaceutical Science Advanced (Honours) (Scholars Program)	4	98.15	41	N/A

### Prerequisite studies

#### VCE

**English:** Units 3 and 4: a study score of at least 27 in English (EAL) or 25 in English other than EAL. **Maths:** Units 3 and 4: a study score of at least 25 in one of Mathematical Methods (any) or Specialist Mathematics. **Science:** Units 3 and 4: a study score of at least 25 in Chemistry.

#### IB

**English:** Level 1. **Maths:** Level 3. **Science:** Chemistry only. For prerequisite subject requirements, please refer to page 50.

### Career options

Academia, biomedical research, biotechnology, clinical trials, drug analysis, pharmaceutical industry, regulatory affairs, research and development, toxicology.

### Scholars Program

If you're a very high-achieving student, you can access our Scholars Program. This provides exclusive learning opportunities, such as seminars normally only open to staff and PhD students, and a \$6000-per-year bursary.

1 Ranked No. 2 for pharmacy and pharmacology, QS World University Rankings by Subject, 2021.

2 The scores provided are to be used as a guide only, and are either the lowest selection rank to which an offer was made in 2022 or an estimate (E).

3 Higher entry requirements apply for the Pharmacy (Honours) (Scholars Program) and Master of Pharmacy; see page 53.

## Bachelor of PHARMACY (Honours) and MASTER OF PHARMACY

COURSE CODE: P6001

LOCATION: PARKVILLE

DURATION: 5 YEARS

INTAKE: FEBRUARY

• PROFESSIONALLY ACCREDITED

### DEGREE AWARDED


Bachelor of Pharmacy (Honours) and Master of Pharmacy, or  
Bachelor of Pharmacy (Honours) (Scholars Program) and  
Master of Pharmacy.

In 2021, Monash ranked No. 2 in the world for pharmacy and pharmacology<sup>1</sup> (only Oxford ranked higher).

As the experts in medicines, pharmacists play a vital role in improving the health of their communities. You'll learn about how the body works, how medicines work, what pharmacists do, and how to provide comprehensive care as part of a team of health professionals. You'll also undertake extensive work placements in community pharmacies, hospitals and other environments.

Monash offers Australia's only integrated bachelor and master of pharmacy. It takes no longer to qualify than any other pharmacy course, but you graduate with a higher-level qualification.

### Entry requirements

COURSE		ATAR <sup>2</sup>	IB <sup>2</sup>	MG
Pharmacy (Honours) and Master of Pharmacy	5	88.10	33	84
Pharmacy (Honours) (Scholars Program) and Master of Pharmacy <sup>3</sup>	5	98.05	41	N/A

### Prerequisite studies

#### VCE

**English:** Units 3 and 4: a study score of at least 27 in English (EAL) or 25 in English other than EAL. **Maths:** Units 3 and 4: a study score of at least 25 in one of Mathematical Methods (any) or Specialist Mathematics. **Science:** Units 3 and 4: a study score of at least 25 in Chemistry.

#### IB

**English:** Level 1. **Maths:** Level 3. **Science:** Chemistry only. For prerequisite subject requirements, please refer to page 50.

### Extra requirements

- Mandatory immunisation requirements
- National Police Records Check
- Working with Children Check.

### Career options

Community pharmacy, government, hospital pharmacy, pharmaceutical industry, public health, regulatory bodies, research and clinical trials.

### Scholars Program

If you're a very high-achieving student, you can access our Scholars Program. This provides exclusive learning opportunities, such as seminars normally only open to staff and PhD students, and a \$6000-per-year bursary.



## Bachelor of APPLIED DATA SCIENCE

COURSE CODE: S2010


LOCATION: CLAYTON  
DURATION: 3 YEARS  
INTAKE: FEBRUARY

We live in a time where information and knowledge have never been more abundant. The decisions that shape our future will rely on graduates who can extract meaning from large volumes of data and transmit it to community and industry leaders.

The Bachelor of Applied Data Science is a program of study that equips you with the skills necessary to provide solutions to a wide range of problems. You'll bring together key skills in information technology and mathematics, and apply these to real-life projects.

This unique blend of skills will empower you to apply data science to a wide range of industries, making you a highly desirable problem-solver.

### Entry requirements

COURSE		ATAR <sup>1</sup>	IB <sup>1</sup>	MG
Applied Data Science	3	85.25	31	75

### Prerequisite studies

#### VCE

**English:** Units 3 and 4: a study score of at least 27 in English (EAL) or 25 in English other than EAL. **Maths:** Units 3 and 4: a study score of at least 25 in Mathematical Methods (any) or Specialist Mathematics.

#### IB

**English:** Level 1. **Maths:** Level 3. For prerequisite subject requirements, please refer to page 50.

### Career options

Business intelligence analyst, data architect, data mining engineer, data scientist.

### VTAC subject adjustment bonus

You may be eligible to take advantage of our VTAC subject adjustment bonus, which could improve your ranking. For further information, email [sci-futurestudents@monash.edu](mailto:sci-futurestudents@monash.edu)

## Bachelor of APPLIED DATA SCIENCE ADVANCED (Honours)


COURSE CODE: S3003

LOCATION: CLAYTON  
DURATION: 4 YEARS  
INTAKE: FEBRUARY

The advent of big data is creating the need for a unique set of skills. This advanced program is designed to equip you with the necessary skills to provide solutions to a wide range of problems.

This four-year specialist course will develop your technical know-how in approaching these challenges. A new and specially designed stream of units will harness core skills in data science and mathematics for a series of authentic, interdisciplinary problem-solving challenges. From the first year of the course, you'll also complete a series of studio-based units where you'll apply the knowledge you've developed to real-world projects. In the final year, you'll synthesise the knowledge acquired during the program in an individual research project.

### Entry requirements

COURSE		ATAR <sup>1</sup>	IB <sup>1</sup>	MG
Applied Data Science Advanced (Honours)	4	91.35	35	90

### Prerequisite studies

#### VCE

**English:** Units 3 and 4: a study score of at least 27 in English (EAL) or 25 in English other than EAL. **Maths:** Units 3 and 4: a study score of at least 30 in Mathematical Methods (any) or Specialist Mathematics.

#### IB

**English:** Level 1. **Maths:** Higher score in level 3. For prerequisite subject requirements, please refer to page 50.

### Career options

Business intelligence analyst, data architect, data mining engineer, data scientist.

<sup>1</sup> The scores provided are to be used as a guide only, and are either the lowest selection rank to which an offer was made in 2022 or an estimate (E). RC – Range of criteria.

# Bachelor of SCIENCE

COURSE CODE: S2000

LOCATION: CLAYTON


DURATION: 3 YEARS

INTAKE: FEBRUARY AND JULY

- INDIGENOUS ENTRY PATHWAY
- LAW PATHWAY

Study science at Monash and learn from leading experts whose research is shaping the world's future. Offering choice and depth across a huge range of science disciplines, you'll graduate with a degree tailored to your interests and career aspirations.

## Entry requirements

COURSE		ATAR <sup>1</sup>	IB <sup>1</sup>	MG
Science	3	85.05	31	75 <sup>2</sup>
<b>Double degree<sup>3</sup> with</b>				
Arts	4	85.20	31	75
Biomedical Science	4	91.20	34	85
Commerce	4	87.90	33	86
Computer Science	4	85.55	31	80
Education (Honours)				
• Primary Education	4.25	85 RC	31 RC	77 RC
• Secondary Education		86.10 RC	32 RC	
Engineering (Honours) <sup>4</sup>	5	89	33	86
Global Studies	4	85.05	31	80
Information Technology	4	86.25	32	80
Laws (Honours)	5.25	97	39	94
Music	4	RC	RC	RC

## Prerequisite studies

### VCE

**English:** Units 3 and 4: a study score of at least 27 in English (EAL) or 25 in English other than EAL. **Science:** Units 3 and 4: a study score of at least 25 in one of Biology, Chemistry, Environmental Science, Geography, Mathematical Methods (any), Specialist Mathematics, Physics or Psychology.

### IB

**English:** Level 1. **Science:** For the approved Science list and prerequisite subject requirements, please refer to page 50.

## Career options

Banking, biochemistry, biomedical science, cryptology, environmental geoscience, genetics, finance, food chemistry, forensic science, industrial physics, mathematical modelling, weather and climate science.

### VTAC subject adjustment bonus

You may be eligible to take advantage of our VTAC subject adjustment bonus, which could improve your ranking. For further information, email [sci-futurestudents@monash.edu](mailto:sci-futurestudents@monash.edu)

## SCIENCE

This table of majors and minors applies to all science degrees listed on pages 46-47.

Majors and minors	Major	Extended major	Minor
<b>BIOLOGICAL AND LIFE SCIENCES</b>			
Ecology and conservation biology	●	●	●
Environmental science		●	
Genetics and genomics	●	●	●
Plant sciences	●		●
Zoology	●		●
<b>EARTH AND ENVIRONMENTAL SCIENCES</b>			
Climate and atmospheric science	●	●	●
Environmental science		●	
Earth science	●	●	●
Geographical science	●	●	●
<b>BIOMEDICAL AND BEHAVIOURAL SCIENCES</b>			
Biochemistry	●	●	●
Developmental biology	●		●
Human pathology	●		
Immunology	●	●	●
Microbiology	●	●	●
Molecular biology			●
Pharmacology	●		●
Physiology	●		●
Psychology	●	●	●
<b>MATHEMATICAL AND COMPUTATIONAL SCIENCES</b>			
Applied mathematics	●	●	
Computational science	●	●	●
Financial and insurance mathematics		●	
Mathematical statistics	●	●	●
Mathematics	●	●	●
Pure mathematics	●	●	
<b>PHYSICS AND CHEMICAL SCIENCES</b>			
Astrophysics	●	●	●
Chemistry	●	●	●
Physics	●	●	●

1 The scores provided are to be used as a guide only, and are either the lowest selection rank to which an offer was made in 2022 or an estimate (E). RC – Range of criteria.

2 This guarantee doesn't apply to the Laws pathway, which requires an ATAR of 90+.

3 For double degree courses you must meet the prerequisites for both courses. See pages 56-59 for a full list of double degree prerequisites. Course codes and CRICOS codes for double degrees are available at [monash.edu/study](http://monash.edu/study)

4 Not available with all engineering specialisations.

## Bachelor of SCIENCE ADVANCED – GLOBAL CHALLENGES (Honours)

**COURSE CODE:** S3001

**LOCATION:** CLAYTON

**DURATION:** 4 YEARS

**INTAKE:** FEBRUARY


- SUPPLEMENTARY INFORMATION FORM
- INTERVIEW

This course includes all the elements of a Bachelor of Science, and more. In addition to studying the scientific discipline of your choice – from the broad range available – you'll receive high-level training in leadership, persuasive communication, entrepreneurship, policy, ethics and corporate social responsibility. The program includes an overseas industry placement.

### Selection requirements

Complete a written submission and, if shortlisted, attend an interview in person: [vtac-supp.adm.monash.edu/SupplementaryVTAC](https://vtac-supp.adm.monash.edu/SupplementaryVTAC)

### Entry requirements

COURSE		ATAR <sup>1</sup>	IB <sup>1</sup>	MG
Science Advanced – Global Challenges (Honours)	4	RC	RC	RC

### Prerequisite studies

#### VCE

**English:** Units 3 and 4: a study score of at least 35 in English (EAL) or 30 in English other than EAL. **Science:** Units 3 and 4: a study score of at least 30 in one of Biology, Chemistry, Environmental Science, Geography, Mathematical Methods (any), Specialist Mathematics, Physics or Psychology.

#### IB

**English:** Level 2. **Science:** higher score required in Science approved list. For prerequisite subject requirements, please refer to page 50.

### Career options

Business, consultancy, corporate social responsibility, entrepreneurship, government and non-government organisations, policymaking.

## Bachelor of SCIENCE ADVANCED – RESEARCH (Honours)

**COURSE CODE:** S3002

**LOCATION:** CLAYTON


**DURATION:** 4 YEARS

**INTAKE:** FEBRUARY AND JULY

Make a difference in the world through the advancement of scientific research.

This four-year science degree is suitable for high-achieving students who intend to pursue careers in research, industry and academia. With access to exclusive enrichment programs and research mentoring from leading scientists, your career as a scientist could take off.

### Entry requirements

COURSE		ATAR <sup>1</sup>	IB <sup>1</sup>	MG
Science Advanced – Research (Honours)	4	95.05	37	90

### Prerequisite studies

#### VCE

**English:** Units 3 and 4: a study score of at least 35 in English (EAL) or 30 in English other than EAL. **Maths:** Units 3 and 4: a study score of at least 30 in Mathematical Methods (any). **Science:** Units 3 and 4: a study score of at least 30 in two of Biology, Chemistry, Environmental Science, Geography, Specialist Mathematics, Physics or Psychology.

#### IB

**English:** Level 2. **Maths:** higher score in level 3. **Science:** higher score required in Science approved list. For prerequisite subject requirements, please refer to page 50.

Note: Mathematics or Further Mathematics can only be used if not counted towards the maths prerequisite.

### Career options

Banking, biochemistry, biomedical science, cryptology, environmental geoscience, genetics, finance, food chemistry, forensic science, industrial physics, mathematical modelling, weather and climate science.

<sup>1</sup> The scores provided are to be used as a guide only, and are either the lowest selection rank to which an offer was made in 2022 or an estimate (E). RC – Range of criteria.



# ADMISSIONS AND APPLICATIONS

## HOW TO APPLY

### Semester 1 entry – apply through VTAC

If you're aiming for semester 1 entry into undergraduate courses at Monash, you must apply via the Victorian Tertiary Admissions Centre (VTAC) at [www.vtac.edu.au](http://www.vtac.edu.au), unless specified in this course guide. VTAC applications open in August each year.

### Semester 2 entry – apply to Monash University

If you're applying for mid-year entry, you must apply directly to Monash.

[monash.edu/admissions/apply/online](http://monash.edu/admissions/apply/online)

### Requirements

To be considered for an undergraduate course, you need to meet Monash's entry and course-specific requirements, as well as the English language minimum prerequisites. Some parts of these, such as VCE study scores and extra requirements, are subject to change, so check the Monash website for the most up-to-date information on the course for which you're applying. Meeting the minimum requirements doesn't guarantee entry to a course, as there may be more applicants than places available.

[monash.edu/study](http://monash.edu/study)

### Deferment

At Monash, you're allowed to defer your course for up to 12 months. Deferment for longer than a year may be considered in exceptional circumstances – for example, financial difficulties or compulsory military service.

Some courses don't allow you to defer your studies – please contact the faculty of your chosen course for advice if needed. Scholarship holders should also check the conditions before applying, as not all scholarships can be deferred.

To apply you'll need to submit an enquiry form via our website and let us know that you want to defer (by the enrolment deadline in your offer letter). You can read more about deferring and what happens after you apply on our website.

[monash.edu/admissions/study-options/defer](http://monash.edu/admissions/study-options/defer)

For enquiries about deferring: [monash.edu/students/support/connect/contact-us](http://monash.edu/students/support/connect/contact-us)



# FEES

We're committed to providing you with an ever-evolving, modern, student experience where you can take charge of your studies while being guided by highly qualified educators who are informed by, and engaged with, industry and the community.

We're investing in innovative learning environments to deliver collaborative, contemporary and flexible learning opportunities. We embrace the opportunities offered by technology and innovation, and embed them in our teaching, in order to prepare you for any career you pursue, including those that aren't yet created.

Our blended learning environment – physical, digital and virtual – prepares you for the workplace, and makes your time at Monash both satisfying and transformative. This underlines our philosophy that the Monash experience extends far beyond university.

In setting our fees, we take into account various factors, including the Consumer Price Index, teaching costs, market trends, demand for expertise, and competitor pricing. We acknowledge that gaining an internationally recognised qualification comes at a cost, but we ensure that the price of our degree programs mirror the true cost of delivering a premium educational experience where you'll learn from some of the finest minds in the world.

## Commonwealth Supported Places

In the Australian higher education system, Australian citizens, New Zealand citizens and Australian permanent visa holders who'll undertake a course of study in Australia are considered domestic students and are eligible for a Commonwealth Supported Place (CSP).

A CSP is a subsidised enrolment where the government pays for part of your course and you only have to pay the Student Contribution Amount (SCA).

Each unit of study is classified into a student contribution band, depending on the study area of the unit (this may be different from the study area of your course). The amount you pay for your unit of study is usually the maximum allowed by the government for that band.

Eligible CSP students may use a HECS-HELP loan to pay for all or part of the SCA.

[monash.edu/enrolments/government-loans/commonwealth-supported-place](https://monash.edu/enrolments/government-loans/commonwealth-supported-place)

[monash.edu/fees](https://monash.edu/fees)

## Student Services and Amenities Fee (SSAF)

Students enrolled at Monash University in a (CSP) are also charged a Student Services and Amenities Fee (SSAF).

In 2022, the maximum SSAF was \$315; this fee may differ in 2023.

Eligible students may use a SA-HELP loan to pay for all or part of the SSAF.

[monash.edu/fees/fee-types/amenities](https://monash.edu/fees/fee-types/amenities)





# ACADEMIC PREREQUISITE LEVELS

All Monash undergraduate courses require you to have previously studied and achieved required standards in certain specified subjects.

The table below outlines the prerequisite levels and subjects.

	English		Mathematics			Science
	■ Level 1	■ Level 2	■ Level 1	■ Level 2	■ Level 3	■ Science approved list?
<b>VCE</b>	Units 3 and 4: a study score of at least 27 <sup>1</sup> in English (EAL) or 25 in English other than EAL.	Units 3 and 4: a study score of at least 35 in English (EAL) or 30 in English other than EAL.	Units 1 and 2: satisfactory completion in two units (any combination) of General Mathematics or Mathematical Methods or Specialist Mathematics.	Units 3 and 4: a study score of at least 22 in Mathematical Methods (any) or Specialist Mathematics, or a score of at least 25 in Further Mathematics.	Units 3 and 4: a study score of at least 25 in one of Mathematical Methods (any) or Specialist Mathematics.	Units 3 and 4: a study score of at least 25 in one of Science approved list, unless otherwise stated.
<b>IB</b>	At least 4 in one of the following SL subjects: <ul style="list-style-type: none"> <li>English A: Literature, or</li> <li>English A: Language and Literature, or</li> <li>Literature and Performance, OR</li> </ul> At least 3 in one of the following HL subjects: <ul style="list-style-type: none"> <li>English A: Literature, or</li> <li>English A: Language and Literature, OR</li> </ul> At least 5 in one of the following SL subjects: <ul style="list-style-type: none"> <li>English AB, or</li> <li>English B, OR</li> </ul> At least 4 in the following HL subject: <ul style="list-style-type: none"> <li>English B.</li> </ul>	At least 5 in one of the following SL subjects: <ul style="list-style-type: none"> <li>English A: Literature, or</li> <li>English A: Language and Literature, or</li> <li>Literature and Performance, OR</li> </ul> At least 4 in one of the following HL subjects: <ul style="list-style-type: none"> <li>English A: Literature, or</li> <li>English A: Language and Literature, OR</li> </ul> At least 6 in one of the following SL subjects: <ul style="list-style-type: none"> <li>English AB, or</li> <li>English B, OR</li> </ul> At least 5 in the following HL subject: <ul style="list-style-type: none"> <li>English B.</li> </ul>	At least 3 in any mathematics subject at SL or HL level.	At least 4 in one of the following SL subjects: <ul style="list-style-type: none"> <li>Math Studies, or</li> <li>Mathematics: Applications and Interpretations, or</li> <li>Mathematics, or</li> <li>Mathematics: Analysis and Approaches</li> </ul> At least 3 in one of the following HL subjects: <ul style="list-style-type: none"> <li>Mathematics: Applications and Interpretations, or</li> <li>Mathematics, or</li> <li>Further Mathematics, or</li> <li>Mathematics: Analysis and Approaches</li> </ul>	At least 4 in one of the following SL subjects: <ul style="list-style-type: none"> <li>Mathematics, or</li> <li>Mathematics: Analysis and Approaches, OR</li> </ul> At least 3 in one of the following HL subjects: <ul style="list-style-type: none"> <li>Mathematics: Applications and Interpretations, Mathematics, or</li> <li>Further Mathematics, or</li> <li>Mathematics: Analysis and Approaches.</li> </ul>	At least 4 at SL or 3 at HL in Science approved list, unless otherwise stated.

## Quick find

Art, Design and Architecture	51	Information Technology	52
Arts, Humanities and Social Sciences	51	Laws	52
Business	51	Medicine, Nursing and Health Sciences	52-53
Education	52	Pharmacy and Pharmaceutical Sciences	53
Engineering	52	Science	53

<sup>1</sup> This applies to all courses except the Bachelor of Education (Honours) and the Bachelor of Paramedicine, where a study score of at least 30 in English (EAL) or 25 in English other than EAL is required.



# 2023 UNDERGRADUATE COURSES AT A GLANCE

## Entry requirements

This table provides key details of all our courses along with the overall score (or an estimate) required for admission, for each course. The course listing also tells you which academic prerequisite levels apply to each course.

Note that some courses have selection and/or extra requirements such as folios, admissions tests or interviews. Make sure you check if this applies to your course of choice in the courses section of this guide (pages 20-47).

Course	Duration (years) <sup>1</sup>	Prerequisites (refer to table on page 50)					Approved list <sup>2</sup> or specified	Degree awarded	Location	Indicative <sup>3</sup> ATAR	Indicative <sup>3</sup> IB score	Monash Guarantee
		English		Mathematics		Science						
		Level 1	Level 2	Level 1	Level 2	Level 3						
<b>ART, DESIGN AND ARCHITECTURE</b>												
<b>Architectural Design</b> <span style="color:red">I</span>	3	■						Bachelor of Architectural Design	CA	75.10	26	75
<b>Design</b> <span style="color:red">I</span>	3	■						Bachelor of Communication Design	CA	70.15	24	70
								Bachelor of Industrial Design				
								Bachelor of Spatial Design				
								Bachelor of Collaborative Design				
<b>Fine Art</b> <span style="color:red">I</span>	3	■						Bachelor of Art History and Curating	CA	71.85	25	70
								Bachelor of Fine Art	CA	RC	RC	RC
<b>ARTS, HUMANITIES AND SOCIAL SCIENCES</b>												
<b>Arts</b> <span style="color:blue">M</span> <span style="color:red">I</span> <span style="color:green">L</span>	3	■						Bachelor of Arts	CA	75.05	26	70 <sup>4</sup>
									CL	80.05	29	
<b>Criminology</b> <span style="color:blue">M</span>	3	■						Bachelor of Criminology	CL	77	29	70
<b>Criminology and Policing</b>	3	■						Bachelor of Criminology and Policing	CL	E: 77	E: 27	70
<b>Global Studies</b> <span style="color:blue">M</span>	3	■						Bachelor of Global Studies	CL	81.75	29	75
<b>Media Communication</b> <span style="color:blue">M</span>	3	■						Bachelor of Media Communication	CA	77.25	27	70
<b>Music</b> <span style="color:blue">M</span>	3	■						Bachelor of Music	CL	RC	RC	RC
<b>Politics, Philosophy and Economics</b> <span style="color:blue">M</span>	3	■			■			Bachelor of Politics, Philosophy and Economics	CL	E: 83 RC	E: 30 RC	75 RC
<b>BUSINESS</b>												
<b>Accounting</b>	3	■			■			Bachelor of Accounting	CA	77.20	27	75
<b>Actuarial Science</b>	3	■				■		Bachelor of Actuarial Science	CL	87.65	32	86
<b>Banking and Finance</b>	3	■			■			Bachelor of Banking and Finance	CA	79.10	28	75
<b>Business</b> <span style="color:red">I</span>	3	■			■			Bachelor of Business	CA	76	27	75
<b>Business Administration</b> <span style="color:red">I</span>	3	■		■				Bachelor of Business Administration	PE	70.60	25	70
<b>Commerce</b> <span style="color:green">L</span>	3	■				■		Bachelor of Commerce	CL	86.50	32	86 <sup>4</sup>
<b>Economics</b>	3	■				■		Bachelor of Economics	CL	85.90	31	TBC <sup>5</sup>
<b>Finance</b>	3	■				■		Bachelor of Finance	CL	86.15	32	86
<b>International Business</b>	3 <sup>6</sup>	■			■			Bachelor of International Business	CA	76.45	27	75
<b>Marketing</b>	3	■			■			Bachelor of Marketing	CA	77.70	28	75

M Master's accelerated pathway I Indigenous entry pathway L Laws pathway

CL – Clayton | CA – Caulfield | CI – City | PE – Peninsula | PA – Parkville.

RC – Range of criteria.

E – Estimated: the provided score is estimated and is to be used as a guide only.

1 Duration is based on a standard full-time load of 48 credit points per annum.

2 Science approved list: **VCE**: Biology, Chemistry, Environmental Science, Geography, Mathematical Methods (any), Specialist Mathematics, Physics or Psychology.

**IB (SL or HL)**: Biology, Chemistry, Environmental Systems and Societies (SL only), Further Mathematics (HL only), Geography, Mathematics, Mathematics: Analysis and Approaches (HL only), Mathematics: Applications and Interpretations (HL only), Physics or Psychology.

3 Indicative – The scores provided are to be used as a guide only, and are either the lowest selection rank to which an offer was made in 2022 or an estimate (E).

4 This guarantee doesn't apply to the Laws pathway, which requires an ATAR of 90+.

5 This score is still to be confirmed. For more information, visit [monash.edu/study](https://monash.edu/study)

6 This course is an accelerated course where you may undertake more than the standard annual load of 48 credit points in order to complete the course in two calendar years.

Course	Duration (years) <sup>1</sup>	Prerequisites (refer to table on page 50)					Approved list <sup>2</sup> or specified	Degree awarded	Location	Indicative <sup>3</sup> ATAR	Indicative <sup>3</sup> IB score	Monash Guarantee
		English		Mathematics		Science						
		Level 1	Level 2	Level 1	Level 2	Level 3						
<b>EDUCATION</b>												
<b>Education I</b>	4.25 <sup>8</sup>	30 in English (EAL) or 25 in English other than EAL	■				Bachelor of Education (Honours) in Early Childhood and Primary Education	PE	71.15 RC	25 RC	70 RC	
							Bachelor of Education (Honours) in Primary Education	PE <sup>7</sup>	71.70 RC	25 RC		
							Bachelor of Education (Honours) in Primary and Secondary Education	CL	71.15 RC	25 RC		
							Bachelor of Education (Honours) in Primary and Secondary Health and Physical Education	CL	73.95 RC	26 RC		
							Bachelor of Education (Honours) in Primary and Secondary Inclusive Education <sup>9</sup>	CL	E: 77 RC	E:27 RC		
							Bachelor of Education (Honours) in Secondary Health and Physical Education	PE	71.05 RC	25 RC		
							Bachelor of Education (Honours) in Secondary Education (studied as part of a double degree)	CL	See page 57 for double degree entry requirements			
<b>ENGINEERING</b>												
<b>Engineering M</b>	4	■				■	Chemistry or Physics	Bachelor of Biomedical Engineering (Honours)	CL	87.25	32	85
								Bachelor of Aerospace Engineering (Honours)				
								Bachelor of Chemical Engineering (Honours)				
								Bachelor of Civil Engineering (Honours)				
								Bachelor of Electrical and Computer Systems Engineering (Honours)				
								Bachelor of Environmental Engineering (Honours)				
								Bachelor of Materials Engineering (Honours)				
								Bachelor of Mechanical Engineering (Honours)				
								Bachelor of Robotics and Mechatronics Engineering (Honours)				
	Bachelor of Software Engineering (Honours)											
5	■				■	Chemistry or Physics	Bachelor of Engineering (Honours) / Master's pathway <sup>10</sup>	CL	94.20	37	N/A	
<b>INFORMATION TECHNOLOGY</b>												
<b>Computer Science</b>	3	■				■		Bachelor of Computer Science	CL	84.15	31	80
							Bachelor of Computer Science in Data Science					
<b>Computer Science Advanced</b>	4	■				■		Bachelor of Computer Science Advanced (Honours)		95.70	38	90
<b>Information Technology I</b>	3	■				■		Bachelor of Information Technology		80.05	29	75
<b>LAWS</b>												
<b>Laws</b>	4.25 <sup>11</sup>		■					Bachelor of Laws (Honours)	CL	97.10	39	94
<b>MEDICINE, NURSING AND HEALTH SCIENCES</b>												
<b>Biomedical Science</b>	3	■				■ or 25+ in Physics	25+ in Chemistry	Bachelor of Biomedical Science	CL	91.05	34	85
						35+ in Maths Methods or Specialist Maths or Physics	35+ in Chemistry for VCE	Bachelor of Biomedical Science (Scholars Program)		98.05	41	N/A
<b>Health Sciences I</b>	3	■						Bachelor of Health Sciences	CA	73.30	26	70
<b>Medicine</b>	5		■				30+ in Chemistry	Bachelor of Medical Science and Doctor of Medicine	CL	RC	RC	RC

**M** Master's accelerated pathway    **I** Indigenous entry pathway    **L** Laws pathway

CL – Clayton | CA – Caulfield | CI – City | PE – Peninsula | PA – Parkville.

RC – Range of criteria.

E – Estimated: the provided score is estimated and is to be used as a guide only.

1 Duration is based on a standard full-time load of 48 credit points per annum.

2 Science approved list: **VCE**: Biology, Chemistry, Environmental Science, Geography, Mathematical Methods (any), Specialist Mathematics, Physics or Psychology. **IB (SL or HL)**: Biology, Chemistry, Environmental Systems and Societies (SL only), Further Mathematics (HL only), Geography, Mathematics, Mathematics: Analysis and Approaches (HL only), Mathematics: Applications and Interpretations (HL only), Physics or Psychology.

3 Indicative – The scores provided are to be used as a guide only, and are either the lowest selection rank to which an offer was made in 2022 or an estimate (E).

7 When taken as part of a double degree, the location will be at Clayton.

Course	Duration (years) <sup>1</sup>	Prerequisites (refer to table on page 50)					Approved list <sup>2</sup> or specified	Degree awarded	Location	Indicative <sup>3</sup> ATAR	Indicative <sup>3</sup> IB score	Monash Guarantee
		English		Mathematics		Science						
		Level 1	Level 2	Level 1	Level 2	Level 3						
<b>MEDICINE, NURSING AND HEALTH SCIENCES (CONTINUED)</b>												
Nursing <b>I</b>	3	■		■			Bachelor of Nursing	CL	77.15 RC	27 RC	70 RC	
							Bachelor of Nursing (Scholars Program)	CL	90.55 RC	25 RC	34 RC	N/A
Nursing and Midwifery	4	■		■			Bachelor of Nursing and Bachelor of Midwifery (Honours)	PE	91 RC	34 RC	82 RC	
Nutrition Science	3	■				Chemistry or Biology	Bachelor of Nutrition Science	CL	75.10	26	70	
							Bachelor of Nutrition Science (Scholars Program)		92.45	35	N/A	
Occupational Therapy <b>I</b>	4	■					Bachelor of Occupational Therapy (Honours)	PE	85.15	31	78	
Paramedicine <b>I</b>	3				■		Bachelor of Paramedicine	PE	87.95	33	79	
Physiotherapy	4		■			Two of Biology, Chemistry, Maths Methods (any), Specialist Maths or Physics	Bachelor of Physiotherapy (Honours)	PE	96.95	39	93	
Psychology	4	■					Bachelor of Psychology (Honours)	CL	89.50	33	80	
Public Health <b>I</b>	3	■					Bachelor of Public Health	CA	85.80	31	79	
Radiation Sciences <b>I</b>	3	■				■	Bachelor of Radiation Sciences	CL <sup>12</sup>	82.35	30	80	
							Bachelor of Radiation Sciences (Informatics)					
Radiography and Medical Imaging	4		■			Biology or Physics	Bachelor of Radiography and Medical Imaging (Honours)	CL	98	41	93	
<b>PHARMACY AND PHARMACEUTICAL SCIENCES</b>												
Pharmaceutical Science	3	■				■	Chemistry	Bachelor of Pharmaceutical Science	PA	84.05	30	75
Pharmaceutical Science Advanced	4	■				■	Chemistry	Bachelor of Pharmaceutical Science Advanced (Honours)		90.05	34	84
								Bachelor of Pharmaceutical Science Advanced (Honours) (Scholars program)		98.15	41	N/A
Pharmacy	4						Chemistry	Bachelor of Pharmacy (Honours)	88.20	33	84	
	5	■				■		Bachelor of Pharmacy (Honours) and Master of Pharmacy	88.10	33	84	
								Bachelor of Pharmacy (Honours) (Scholars Program) and Master of Pharmacy	98.05	41	N/A	
<b>SCIENCE</b>												
Applied Data Science	3	■				■		Bachelor of Applied Data Science	CL	85.25	31	75
Applied Data Science Advanced	4	■				30+ in Maths Methods or Specialist Maths		Bachelor of Applied Data Science Advanced (Honours)		91.35	35	90
Science <b>I L</b>	3	■					■	Bachelor of Science		85.05	31	75 <sup>8</sup>
Science Advanced – Global Challenges	4		■				A study score of at least 30 in one Science approved list	Bachelor of Science Advanced – Global Challenges (Honours)	RC	RC	RC	
Science Advanced – Research	4		■			30+ in Maths Methods	A study score of at least 30 in two of Biology, Chemistry, Environmental Science, Geography, Specialist Mathematics, Physics or Psychology	Bachelor of Science Advanced – Research (Honours)	95.05	37	90	

8 The Bachelor of Education (Honours) is an accelerated course where you'll be required to undertake more than the standard annual load of 48 credit points in year two and/or year three in order to complete the course in four calendar years.

9 The Bachelor of Education (Honours) in Primary and Secondary Inclusive Education is still to be confirmed, visit [monash.edu/study](https://monash.edu/study) for updated information.

10 The accelerated master's pathway is not available with all specialisations. Please see [monash.edu/study](https://monash.edu/study) for more information.

11 The Bachelor of Laws (Honours) is an accelerated course where you'll be required to undertake more than the standard annual load of 48 credit points in year two and/or year three in order to complete the course in four calendar years.

12 The first part of study commences in Caulfield, and then moves to Clayton.



# DOUBLE YOUR OPTIONS WITH A DOUBLE DEGREE

A Monash double degree course allows you to study towards two degrees at the same time.

## What is a double degree course?

Monash offers two types of double degrees: a double undergraduate degree and an undergraduate/graduate double degree. A Monash double undergraduate degree course allows you to study towards two degrees at the same time. This means you can keep your options open, develop expertise in different but complementary areas, or simply pursue two areas of interest in greater depth. You'll be awarded with two testamurs, one for each degree completed.

## Double undergraduate degree

### How long does it take?

A double undergraduate degree course takes two years less to complete than studying towards the two degrees separately. This is because the required units in one course count as electives in the other. For example, if you decide to take a Bachelor of Engineering (Honours) and a Bachelor of Commerce, it'll take you five years instead of seven. Therefore, you would take all the common core units for engineering as well as your 18 units of specialisation. You'll also take all the prescribed core units in commerce as well as eight units that make up your commerce major. So not only will you save two years of time, you'll also save two years of course fees.

### Sample course map

#### Year 1

Semester 1	Engineering	Engineering	Engineering	Engineering
Semester 2	Engineering	Engineering	Commerce	Commerce

#### Year 2

Semester 1	Engineering	Engineering	Engineering	Engineering
Semester 2	Economics	Commerce	Commerce	Commerce

#### Year 3

Semester 1	Engineering	Engineering	Engineering	Engineering
Semester 2	Economics	Economics	Economics	Economics

#### Year 4

Semester 1	Engineering	Engineering	Engineering	Engineering
Semester 2	Economics	Economics	Economics	Commerce

#### Year 5

Semester 1	Engineering	Engineering	Engineering	Engineering
Semester 2	Engineering	Engineering	Commerce	Commerce

## Bachelor's/master's double degree courses

Some double degree courses incorporate both an undergraduate and graduate element. After five years you'll graduate with both a bachelor's and a master's degree. These courses, covered entirely by Commonwealth Supported Place (CSP) funding, are:

- Bachelor of Medical Science and Doctor of Medicine
- Bachelor of Pharmacy (Honours) and Master of Pharmacy.

In addition, the Bachelor of Arts (page 22) and the Bachelor of Engineering (Honours) (page 33) offer accelerated master's pathways that enable you to complete an expert master's course with only one further year of study.

### Sample course map – double arts bachelor's/arts master's accelerated pathway

#### Year 1\*

Semester 1	Arts Major	Arts Minor 1	Arts Elective 1	Elective
Semester 2	Arts Major	Arts Minor 2	Arts Elective 2	Elective

#### Year 2\*

Semester 1	Arts Major	Arts Minor 3	Arts Elective 3	Elective
Semester 2	Arts Major	Arts Major	Arts Minor 4	Elective

#### Year 3\*

Semester 1	Arts Major	Arts Major	Master Part B	Master Part B
Semester 2	Arts Major	Arts Elective 4	Master Part B	Master Part B

#### Year 4

Semester 1	Master Part C	Master Part C	Master Part C	Master Part C
Semester 2	Master Part C	Master Part C	Master Part C	Master Part C

\* Under this arrangement, years one to three, including the four master's units, are covered by CSP funding. The final fourth year is the standard full-fee master's program.

## Entry requirements

Some double degree courses may require you to study across two campuses in order to complete your course. To be eligible for admission to a double degree course, you'll need to meet the academic entry requirements for both single degree courses. For example, if you're applying for the Bachelor of Laws and Bachelor of Music double degree, you'll need to satisfy the subject prerequisites for both courses as well as any range of criteria requirements that apply for either of the courses. The back tables in this brochure provide a guide to the overall score, or an estimate, required for admission in 2022. All scores are to be used as a guide only.

	Accounting	Actuarial Science	Architectural Design	Arts	Banking and Finance	Biomedical Science	Business	Commerce	Computer Science	Criminology	Design	Economics	Education	Engineering	– Aerospace	– Biomedical Engineering	– Chemical	– Civil	– Electrical and computer systems	– Environmental	– Materials	– Mechanical	– Robotics and Mechatronics	– Software	Finance	Fine Art <sup>1</sup>	Global Studies	Information Technology	International Business	Laws	Marketing	Media Communication	Music	Pharmaceutical Science	Pharmacy	Politics, Philosophy and Economics	Science			
<b>Accounting</b>							■																																	
<b>Actuarial Science</b>								■																																
<b>Architectural Design</b>														■																										
<b>Arts</b>			■				■	■		■			■	■	■	■	■	■	■	■	■	■	■	■	■	■	■	■	■	■	■	■	■	■	■	■	■	■		
<b>Banking and Finance</b>							■																																	
<b>Biomedical Science</b>								■						■			■	■	■		■	■																■		
<b>Business</b>	■			■	■						■		■																											
<b>Commerce</b>		■		■	■				■																															
<b>Computer Science</b>								■																																
<b>Criminology</b>				■																																				
<b>Design</b>							■																■ <sup>1</sup>																	
<b>Economics</b>								■																																
<b>Education</b>				■			■																																	
<b>Engineering</b>			■	■	■	■	■	■						■ <sup>2</sup>																										
– Aerospace				■				■																																
– Biomedical Engineering				■				■																																
– Chemical				■	■	■	■	■																													■ <sup>3</sup>			
– Civil			■	■	■	■	■	■																																
– Electrical and computer systems				■	■	■	■	■																																
– Environmental				■	■	■	■	■																																
– Materials				■	■	■	■	■																																
– Mechanical				■	■	■	■	■			■ <sup>1</sup>																													
– Robotics and Mechatronics				■	■	■	■	■																																
– Software				■				■	■																															
<b>Finance</b>								■																																
<b>Fine Art</b>				■			■						■																											
<b>Global Studies</b>																																								
<b>Information Technology</b>				■			■	■		■	■		■																											
<b>International Business</b>				■			■																																	
<b>Laws</b>				■	■		■	■	■				■	■	■	■	■	■	■	■	■	■	■	■	■	■	■	■	■	■	■	■	■	■	■	■	■	■		
<b>Marketing</b>				■																																				
<b>Media Communication</b>																																								
<b>Music</b>				■				■					■																											
<b>Pharmaceutical Science</b>																																								
<b>Pharmacy</b>																																								
<b>Politics, Philosophy and Economics</b>				■				■																																
<b>Science</b>				■		■	■	■					■	■	■	■	■	■	■	■	■	■	■	■	■	■	■	■	■	■	■	■	■	■	■	■	■	■		

■ Undergraduate/graduate degree | ■ Double undergraduate degree | ■ Accelerated master's pathway

1 Available only with the industrial design specialisation.  
 2 The accelerated pathway is only available with some specialisations.  
 3 Available only with the formulation science specialisation.

# DOUBLE DEGREE COURSES AT A GLANCE

Monash University has the largest offering of double degrees in Australia.

For admission to double degree courses, generally the higher requirements for the two component single degree courses is a good indicator of the likely requirements for the double degree course.

In each case you should expect to meet the entry level of each of the single degree courses. Some double degree courses may require you to study across two campuses in order to complete your course.

Where there's a range of criteria for one of the component courses, these criteria will still apply to the double degree course.

Course	Duration (years) <sup>1</sup>	Prerequisites (refer to table on page 50)						Degree awarded	Location	Indicative <sup>3</sup> ATAR	Indicative <sup>3</sup> IB score	Monash Guarantee
		English		Mathematics			Science					
		Level 1	Level 2	Level 1	Level 2	Level 3	Approved list <sup>2</sup> or specified					
Arts / Criminology	4	■						Bachelor of Arts and Bachelor of Criminology	CL	80.10	29	70
Arts / Fine Art <sup>4,5</sup>	4	■						Bachelor of Arts and Bachelor of Fine Art	CA	RC	RC	RC
								Bachelor of Arts and Bachelor of Art History and Curating	CA	81.35	29	70
Arts / Music <sup>4,5</sup>	4	■						Bachelor of Arts and Bachelor of Music	CL	RC	RC	RC
Business / Accounting	4	■			■			Bachelor of Business and Bachelor of Accounting	CA	79.10	28	75
Business / Arts <sup>4</sup>	4	■			■			Bachelor of Business and Bachelor of Arts	CA	79.35	28	75
Business / Banking and Finance	4	■			■			Bachelor of Business and Bachelor of Banking and Finance	CA	80.45	29	75
Business / Information Technology	4	■			■			Bachelor of Business and Bachelor of Information Technology	CA	78.05	28	75
Business / International Business	4	■			■			Bachelor of Business and Bachelor of International Business	CA	78.15	28	75
Business / Marketing	4	■			■			Bachelor of Business and Bachelor of Marketing	CA	80.45	29	75
Business / Media Communication	4	■			■			Bachelor of Business and Bachelor of Media Communication	CA	79.55	28	75
Commerce / Actuarial Science	4	■				■		Bachelor of Commerce and Bachelor of Actuarial Science	CL	88.05	33	86
Commerce / Arts <sup>4</sup>	4	■				■		Bachelor of Commerce and Bachelor of Arts	CL	87.90	33	86
Commerce / Biomedical Science	4	■				■	Chemistry	Bachelor of Commerce and Bachelor of Biomedical Science	CL	92.10	35	88
Commerce / Computer Science	4	■				■		Bachelor of Commerce and Bachelor of Computer Science	CL	92.10	35	88
								Bachelor of Commerce and Bachelor of Computer Science in Data Science				
Commerce / Economics	4	■				■		Bachelor of Commerce and Bachelor of Economics	CL	87.40	32	86
Commerce / Finance	4	■				■		Bachelor of Commerce and Bachelor of Finance	CL	88.50	33	86
Commerce / Global Studies	4	■				■		Bachelor of Commerce and Bachelor of Global Studies	CL	87.55	32	86
Commerce / Information Technology	4	■				■		Bachelor of Commerce and Bachelor of Information Technology	CL	87.80	33	86
Commerce / Music <sup>5</sup>	4	■				■		Bachelor of Commerce and Bachelor of Music	CL	RC	RC	RC
Commerce / Politics, Philosophy and Economics	4	■				■		Bachelor of Commerce and Bachelor of Politics, Philosophy and Economics	CL	RC	RC	RC
Commerce / Science	4	■				■		Bachelor of Commerce and Bachelor of Science	CL	87.90	33	86
Criminology / Information Technology	4	■		■				Bachelor of Criminology and Bachelor of Information Technology	CL	77	27	75

CL – Clayton | CA – Caulfield | CI – City | PE – Peninsula | PA – Parkville.  
 RC – Range of criteria.  
 E – Estimated: the provided score is estimated and is to be used as a guide only.



Course	Duration (years) <sup>1</sup>	Prerequisites (refer to table on page 50)						Degree awarded	Location	Indicative <sup>3</sup> ATAR	Indicative <sup>3</sup> IB score	Monash Guarantee
		English		Mathematics			Science					
		Level 1	Level 2	Level 1	Level 2	Level 3	Approved list <sup>2</sup> or specified					
Design / Business	4	■			■			Bachelor of Communication Design and Bachelor of Business	CA	78.10	28	75
								Bachelor of Collaborative Design and Bachelor of Business				
								Bachelor of Industrial Design and Bachelor of Business				
								Bachelor of Spatial Design and Bachelor of Business				
Design / Information Technology	4	■		■				Bachelor of Communication Design and Bachelor of Information Technology	CL, CA	83.05	30	75
								Bachelor of Collaborative Design and Bachelor of Information Technology				
								Bachelor of Industrial Design and Bachelor of Information Technology				
								Bachelor of Spatial Design and Bachelor of Information Technology				
Design / Media Communication	4	■						Bachelor of Communication Design and Bachelor of Media Communication	CA	78.20	28	75
								Bachelor of Collaborative Design and Bachelor of Media Communication				
								Bachelor of Industrial Design and Bachelor of Media Communication				
								Bachelor of Spatial Design and Bachelor of Media Communication				
Education / Arts <sup>4</sup>	4.25 <sup>6</sup>	■		■				Bachelor of Education (Honours) in Primary Education and Bachelor of Arts	CL	80.10 RC	30 RC	77 RC
								Bachelor of Education (Honours) in Secondary Education and Bachelor of Arts		80.05 RC		
Education / Business	4.25 <sup>6</sup>	■		■				Bachelor of Education (Honours) in Primary Education and Bachelor of Business	CL	80 RC	29 RC	77 RC
								Bachelor of Education (Honours) in Secondary Education and Bachelor of Business		82.15 RC		
Education / Fine Art <sup>5</sup>	4.25 <sup>6</sup>	■		■				Bachelor of Education (Honours) in Primary Education and Bachelor of Fine Art	CA, CL	RC	RC	RC
								Bachelor of Education (Honours) in Secondary Education and Bachelor of Fine Art				
Education / Music <sup>5</sup>	4.25 <sup>6</sup>	■		■				Bachelor of Education (Honours) in Primary Education and Bachelor of Music	CL	RC	RC	RC
								Bachelor of Education (Honours) in Secondary Education and Bachelor of Music				
Education / Science	4.25 <sup>6</sup>	■		■			■	Bachelor of Education (Honours) in Primary Education and Bachelor of Science	CL	85 RC	31 RC	77 RC
								Bachelor of Education (Honours) in Secondary Education and Bachelor of Science		86.10 RC	32 RC	
Engineering / Architectural Design	5	■			■		Chemistry or Physics	Bachelor of Civil Engineering (Honours) and Bachelor of Architectural Design	CA, CL	90.25	34	86
Engineering / Arts <sup>4</sup>	5	■					Chemistry or Physics	Bachelor of Aerospace Engineering (Honours) and Bachelor of Arts	CL	91.85	35	86
								Bachelor of Chemical Engineering (Honours) and Bachelor of Arts				
								Bachelor of Civil Engineering (Honours) and Bachelor of Arts				
								Bachelor of Electrical and Computer Systems Engineering (Honours) and Bachelor of Arts				
								Bachelor of Environmental Engineering (Honours) and Bachelor of Arts				
								Bachelor of Materials Engineering (Honours) and Bachelor of Arts				
								Bachelor of Mechanical Engineering (Honours) and Bachelor of Arts				
								Bachelor of Robotics and Mechatronics Engineering (Honours)				
Bachelor of Software Engineering (Honours) and Bachelor of Arts												

1 Duration is based on a standard full-time load of 48 credit points per annum.

2 Science approved list: **VCE:** Biology, Chemistry, Environmental Science, Geography, Mathematical Methods (any), Specialist Mathematics, Physics or Psychology.

**IB (SL or HL):** Biology, Chemistry, Environmental Systems and Societies (SL only), Further Mathematics (HL only), Geography, Mathematics, Mathematics: Analysis and Approaches (HL only), Mathematics: Applications and Interpretations (HL only), Physics or Psychology.

3 Indicative – The scores provided are to be used as a guide only, and are either the lowest selection rank to which an offer was made in 2022 or an estimate (E).

4 Depending on your Arts major, you may take the Arts component at Clayton or Caulfield.

5 This course has additional selection requirements; see [monash.edu/study](http://monash.edu/study)

6 The Bachelor of Education (Honours) is an accelerated course where you'll be required to undertake more than the standard annual load of 48 credit points in year two and/or year three in order to complete the course in four calendar years.

Course	Duration (years) <sup>1</sup>	Prerequisites (refer to table on page 50)						Degree awarded	Location	Indicative <sup>2</sup> ATAR	Indicative <sup>3</sup> IB score	Monash Guarantee
		English		Mathematics			Science					
		Level 1	Level 2	Level 1	Level 2	Level 3	Approved list <sup>2</sup> or specified					
Engineering / Biomedical Science	5	■					Chemistry	Bachelor of Chemical Engineering (Honours) and Bachelor of Biomedical Science	CL	92.20	35	88
								Bachelor of Civil Engineering (Honours) and Bachelor of Biomedical Science				
								Bachelor of Electrical and Computer Systems Engineering (Honours) and Bachelor of Biomedical Science				
								Bachelor of Materials Engineering (Honours) and Bachelor of Biomedical Science				
								Bachelor of Mechanical Engineering (Honours) and Bachelor of Biomedical Science				
Engineering / Commerce	5	■					Chemistry or Physics	Bachelor of Aerospace Engineering (Honours) and Bachelor of Commerce	CL	90.75	34	88
								Bachelor of Chemical Engineering (Honours) and Bachelor of Commerce				
								Bachelor of Civil Engineering (Honours) and Bachelor of Commerce				
								Bachelor of Electrical and Computer Systems Engineering (Honours) and Bachelor of Commerce				
								Bachelor of Environmental Engineering (Honours) and Bachelor of Commerce				
								Bachelor of Materials Engineering (Honours) and Bachelor of Commerce				
								Bachelor of Mechanical Engineering (Honours) and Bachelor of Commerce				
								Bachelor of Robotics and Mechatronics Engineering (Honours)				
Bachelor of Software Engineering (Honours) and Bachelor of Commerce												
Engineering / Computer Science	5	■					Chemistry or Physics	Bachelor of Electrical and Computer Systems Engineering (Honours) and Bachelor of Computer Science	CL	90.15	34	88
								Bachelor of Software Engineering (Honours) and Bachelor of Computer Science				
Engineering / Design	5	■					Chemistry or Physics	Bachelor of Mechanical Engineering (Honours) and Bachelor of Industrial Design	CA, CL	90.60	34	86
Engineering / Information Technology	5	■					Chemistry or Physics	Bachelor of Electrical and Computer Systems Engineering (Honours) and Bachelor of Information Technology	CL	88.85	33	86
								Bachelor of Software Engineering (Honours) and Bachelor of Information Technology				
Engineering / Pharmaceutical Science	5	■					Chemistry	Bachelor of Chemical Engineering (Honours) and Bachelor of Pharmaceutical Science	CL	90.10	34	86
Engineering / Science	5	■					Chemistry or Physics	Bachelor of Aerospace Engineering (Honours) and Bachelor of Science	CL	89	33	86
								Bachelor of Chemical Engineering (Honours) and Bachelor of Science				
								Bachelor of Civil Engineering (Honours) and Bachelor of Science				
								Bachelor of Electrical and Computer Systems Engineering (Honours) and Bachelor of Science				
								Bachelor of Environmental Engineering (Honours) and Bachelor of Science				
								Bachelor of Materials Engineering (Honours) and Bachelor of Science				
								Bachelor of Mechanical Engineering (Honours) and Bachelor of Science				
Bachelor of Robotics and Mechatronics Engineering (Honours)												
Bachelor of Software Engineering (Honours) and Bachelor of Science												

CL – Clayton | CA – Caulfield | CI – City | PE – Peninsula | PA – Parkville.  
 RC – Range of criteria  
 E – Estimated: the provided score is estimated and is to be used as a guide only.

1 Duration is based on a standard full-time load of 48 credit points per annum.  
 2 Science approved list: **VCE**: Biology, Chemistry, Environmental Science, Geography, Mathematical Methods (any), Specialist Mathematics, Physics or Psychology.  
**IB (SL or HL)**: Biology, Chemistry, Environmental Systems and Societies (SL only), Further Mathematics (HL only), Geography, Mathematics, Mathematics: Analysis and Approaches (HL only), Mathematics: Applications and Interpretations (HL only), Physics or Psychology.  
 3 Indicative – The scores provided are to be used as a guide only, and are either the lowest selection rank to which an offer was made in 2022 or an estimate (E).  
 4 Depending on your Arts major, you may take the Arts component at Clayton or Caulfield.  
 5 This course has additional selection requirements; see [monash.edu/study](http://monash.edu/study)

Course	Duration (years) <sup>7</sup>	Prerequisites (refer to table on page 50)						Degree awarded	Location	Indicative <sup>3</sup> ATAR	Indicative <sup>3</sup> IB score	Monash Guarantee
		English		Mathematics			Science					
		Level 1	Level 2	Level 1	Level 2	Level 3	Approved list <sup>2</sup> or specified					
Fine Art <sup>6</sup> / Business	4	■			■			Bachelor of Fine Art and Bachelor of Business	CA	RC	RC	RC
								Bachelor of Art History and Curating and Bachelor of Business	CA	E: 75.80	E: 27	75
Fine Art <sup>6</sup> / Information Technology	4	■			■			Bachelor of Fine Art and Bachelor of Information Technology	CA	RC	RC	RC
Fine Art <sup>6</sup> / Media Communication	4	■						Bachelor of Fine Art and Bachelor of Media Communication	CA	RC	RC	RC
								Bachelor of Art History and Curating and Bachelor of Media Communication	CA	E: 77	E: 27	75
Global Studies / Information Technology	4	■			■			Bachelor of Global Studies and Bachelor of Information Technology	CL	E: 81.75	E: 29	75
Information Technology / Arts <sup>4</sup>	4	■			■			Bachelor of Information Technology and Bachelor of Arts	CL	82.55	30	78
Information Technology / Science	4	■			■		■	Bachelor of Information Technology and Bachelor of Science	CL	86.25	32	80
International Business / Arts <sup>4</sup>	4	■			■			Bachelor of International Business and Bachelor of Arts	CA	78.05	28	75
Laws / Arts <sup>4</sup>	5.25 <sup>6</sup>		■					Bachelor of Laws (Honours) and Bachelor of Arts	CL	97	39	94
Laws / Biomedical Science	5.25 <sup>6</sup>		■			■ or 25+ in Physics	Chemistry	Bachelor of Laws (Honours) and Bachelor of Biomedical Science	CL	97.25	40	94
Laws / Commerce	5.25 <sup>6</sup>		■			■		Bachelor of Laws (Honours) and Bachelor of Commerce	CL	97	39	94
Laws / Computer Science	5.25 <sup>6</sup>		■			■		Bachelor of Laws (Honours) and Bachelor of Computer Science	CL	97.10	39	94
								Bachelor of Laws (Honours) and Bachelor of Computer Science in Data Science				
Laws / Criminology	5.25 <sup>6</sup>		■					Bachelor of Laws (Honours) and Bachelor of Criminology	CL	97	39	94
Laws / Engineering	6.25 <sup>7</sup>		■			■	Chemistry or Physics	Bachelor of Laws (Honours) and Bachelor of Aerospace Engineering (Honours)	CL	97.30	40	94
								Bachelor of Laws (Honours) and Bachelor of Chemical Engineering (Honours)				
								Bachelor of Laws (Honours) and Bachelor of Civil Engineering (Honours)				
								Bachelor of Laws (Honours) and Bachelor of Electrical and Computer Systems Engineering (Honours)				
								Bachelor of Laws (Honours) and Bachelor of Materials Engineering (Honours)				
Laws / Global Studies	5.25 <sup>6</sup>		■					Bachelor of Laws (Honours) and Bachelor of Global Studies	CL	97.05	39	94
Laws / Information Technology	5.25 <sup>6</sup>		■		■			Bachelor of Laws (Honours) and Bachelor of Information Technology	CL	97	39	94
Laws / Music <sup>5</sup>	5.25 <sup>6</sup>		■					Bachelor of Laws (Honours) and Bachelor of Music	CL	RC	RC	RC
Laws / Politics, Philosophy and Economics	5.25 <sup>6</sup>		■		■			Bachelor of Laws (Honours) and Bachelor of Politics, Philosophy and Economics	CL	97 RC	39 RC	94 RC
Laws / Science	5.25 <sup>6</sup>		■				■	Bachelor of Laws (Honours) and Bachelor of Science	CL	97	39	94
Marketing / Arts <sup>4</sup>	4	■			■			Bachelor of Marketing and Bachelor of Arts	CA	82.95	30	75
Marketing / Media Communication	4	■			■			Bachelor of Marketing and Bachelor of Media Communication	CA	77.65	28	75
Nursing / Midwifery	4	■			■			Bachelor of Nursing and Bachelor of Midwifery (Honours)	PE	91 RC	34 RC	82 RC
Politics, Philosophy and Economics / Arts	4	■			■			Bachelor of Arts and Bachelor of Politics, Philosophy and Economics	CL	E: 83 RC	E: 30 RC	75 RC
Science / Arts <sup>4</sup>	4	■					■	Bachelor of Science and Bachelor of Arts	CL	85.20	31	75
Science / Biomedical Science	4	■				■ or 25+ in Physics	Chemistry	Bachelor of Science and Bachelor of Biomedical Science	CL	91.20	34	85
Science / Computer Science	4	■				■		Bachelor of Science and Bachelor of Computer Science	CL	85.55	31	80
								Bachelor of Science and Bachelor of Computer Science in Data Science				
Science / Global Studies	4	■					■	Bachelor of Science and Bachelor of Global Studies	CL	85.05	31	80
Science / Music <sup>5</sup>	4	■					■	Bachelor of Science and Bachelor of Music	CL	RC	RC	RC

<sup>6</sup> The Bachelor of Laws (Honours) is an accelerated course where you'll be required to undertake more than the standard annual load of 48 credit points in year two and/or year three in order to complete this double degree course in five calendar years.

<sup>7</sup> The Bachelor of Laws (Honours) is an accelerated course where you'll be required to undertake more than the standard annual load of 48 credit points in year two and/or year three in order to complete this double degree course in six calendar years.



# GLOSSARY

Universities use some words you might not be familiar with. So to make sure nothing is lost in translation, we've put together a list of explanations.

## Prerequisites

Previous study or other criteria required to gain admission into a particular course or unit.

## Undergraduate course

The first level of tertiary studies at university, including diploma or bachelor degree courses.

## Units

Subjects that make up your course are known as units.

## Elective

A unit where you choose what unit to study. The choice may be from a specified list of units, or it may be a free elective where you can choose any unit within Monash providing you have the necessary entry requirements and there are no restrictions on enrolment in the unit.

## Degree

The academic title you get when you complete a course of study. For example: Bachelor of Arts, Master of Business.

## Double degree courses

Two courses studied concurrently with required units in one course being counted as elective units in the other. A double degree takes fewer years to complete than if you studied one after the other.

## Comprehensive course

These courses allow you to select from a wide range of subjects within a broad field of study. You have the option to choose your major immediately or later, and you'll try a range of subjects in your first year before narrowing your focus in year two – while still having the opportunity to try new things – before finally committing to your major area of study.

## Major

The main area(s) of study chosen in a comprehensive course, study in a single discipline, totalling 48 credit points (eight units) taken sequentially over three years. You don't need to declare your major when you enrol.

## Extended major

An extended version of your major requiring you to study 72 credit points (12 units) over three years.

## Minor

Study in a single discipline, totalling 24 points (four units).

## Specialist course

A structured course usually focused on developing the knowledge and skills needed for professional practice in a specific field or profession.

## Specialisation

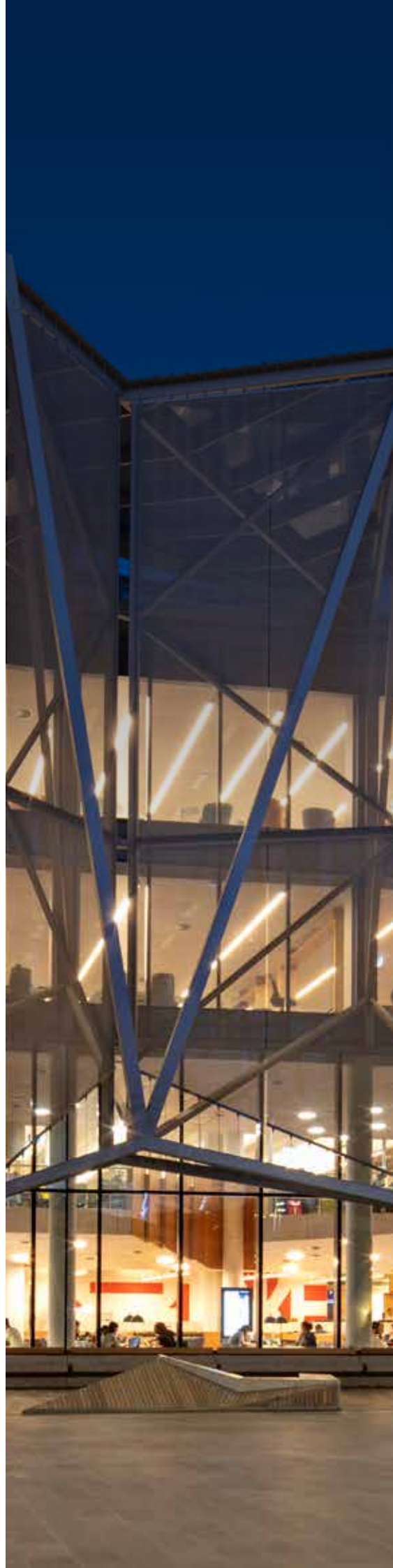
Taken in specialist courses, a specialisation is a minimum of 12 units in a particular discipline, and provides an in-depth education in your chosen field. You must choose your specialisation when you enrol.

## Honours

Honours may be an extra year of study at the end of your undergraduate degree. All of our four-year undergraduate courses include honours in their structure.

## Graduate courses

Further study completed after you graduate with a bachelor's degree.





LIBRARY Y



## DISCOVER MONASH IN 2022

Do you want to learn more about Monash, get a feel for which course is right for you, or perhaps experience what life and study would be like on one of our four campuses? We've got an event to suit you.

### About Monash events

Learn more about what your study options are, pathway opportunities, scholarships, SEAS, fees, accommodation and everything else there is to know about studying at Monash.

### Discipline and Course events

Hear from current and past students as well as academics across our ten faculties. You'll find out more about our courses, internships, career outcomes and so much more!

### Campus experience events

Join us at Open Day to see and experience student life at Monash. You can also tour one of our four Victorian campuses throughout the year. Can't make it to a tour? That's ok, we have a virtual option for you.

### Find out more!

[monash.edu/discover](https://monash.edu/discover)



**MONASH UNIVERSITY**  
[monash.edu](https://monash.edu)

**FIND A COURSE**  
[monash.edu/study](https://monash.edu/study)

**FUTURE STUDENT ENQUIRIES**  
**Australian citizens, permanent residents  
and New Zealand citizens**  
[monash.edu/study/contact](https://monash.edu/study/contact)

**International students**  
T Australia freecall: 1800 MONASH (666 274)  
T +61 3 9903 4788 (outside Australia)  
E [study@monash.edu](mailto:study@monash.edu)

